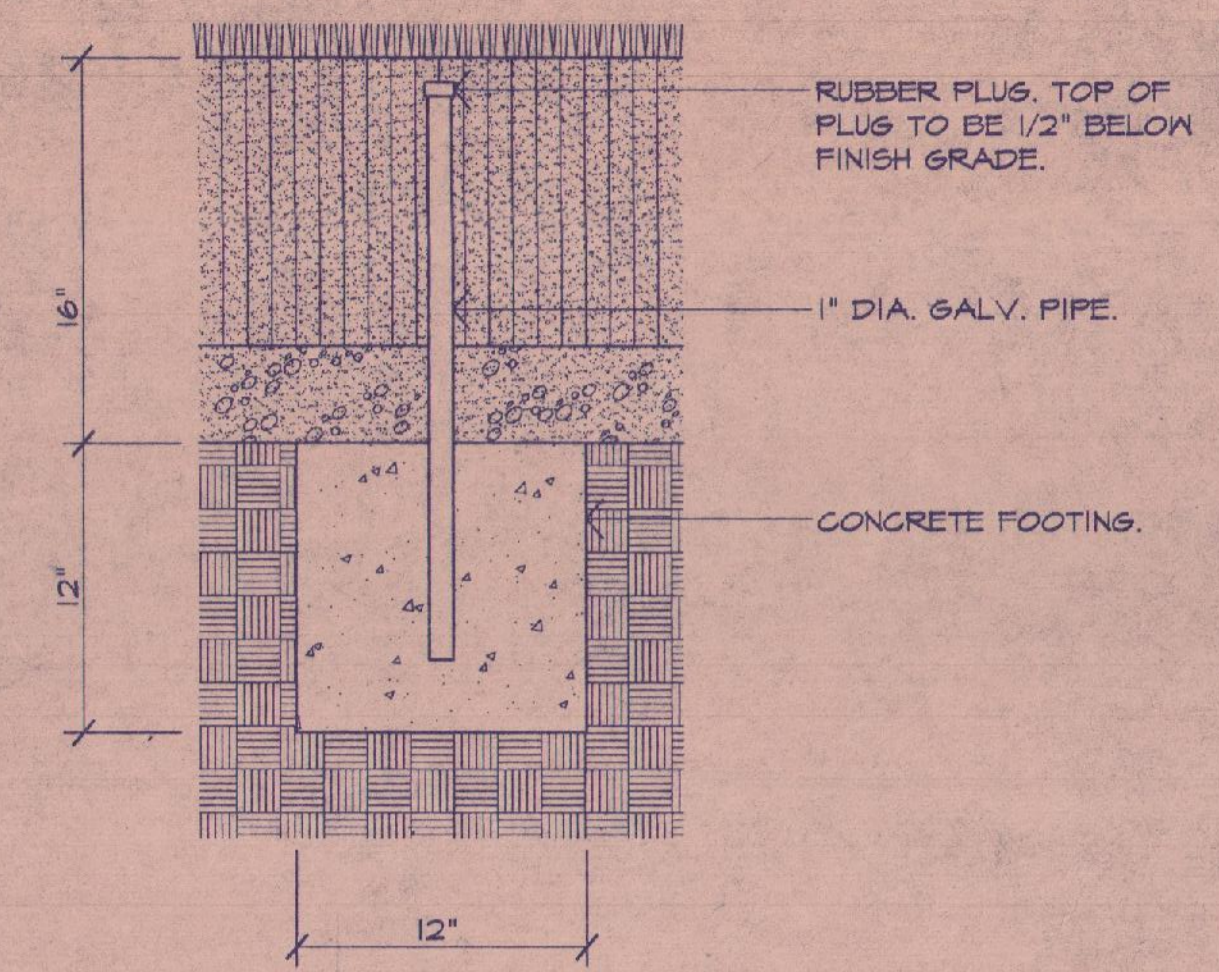
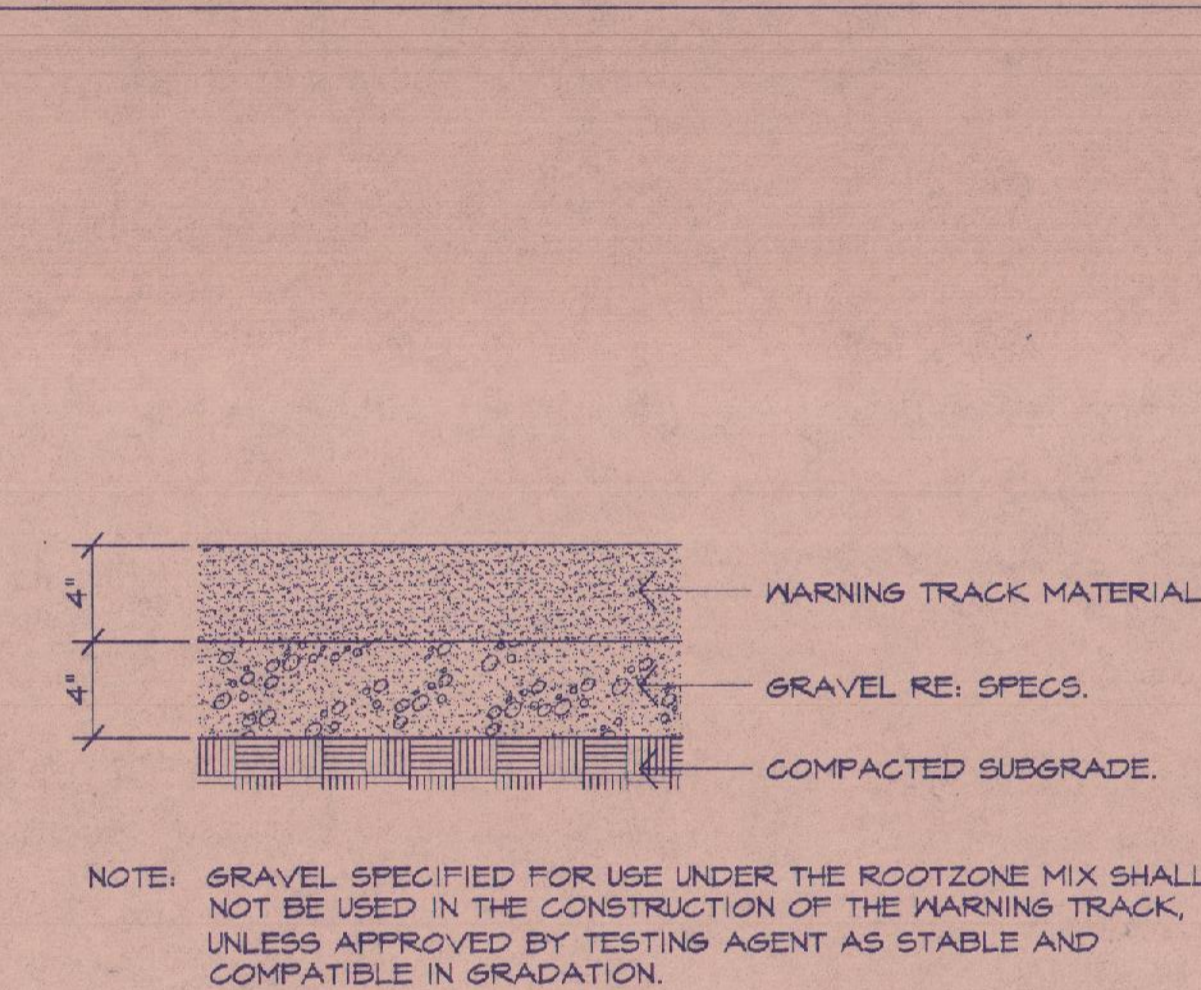


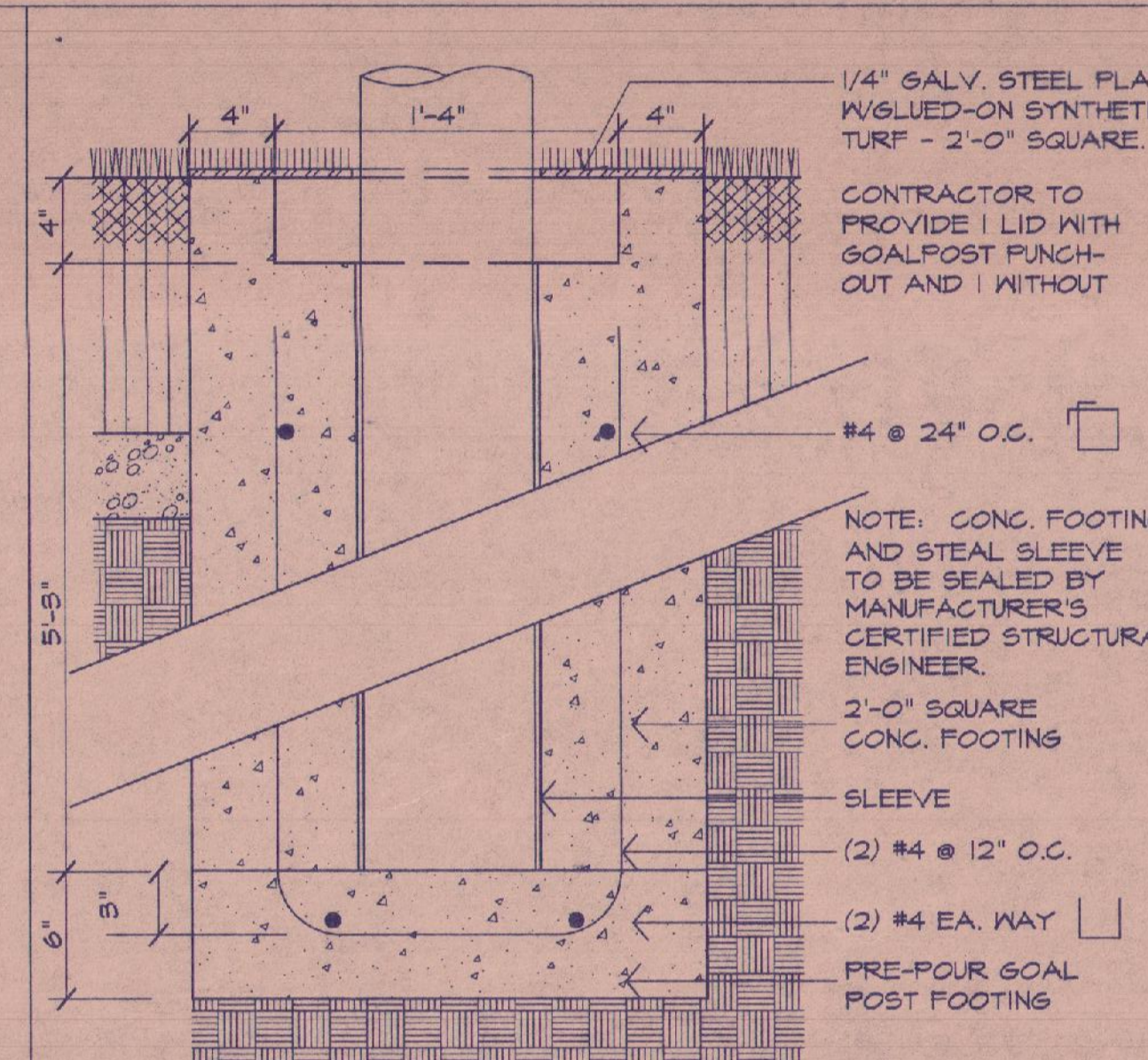
K SECTION @ COLLECTOR PIPE
N.T.S.



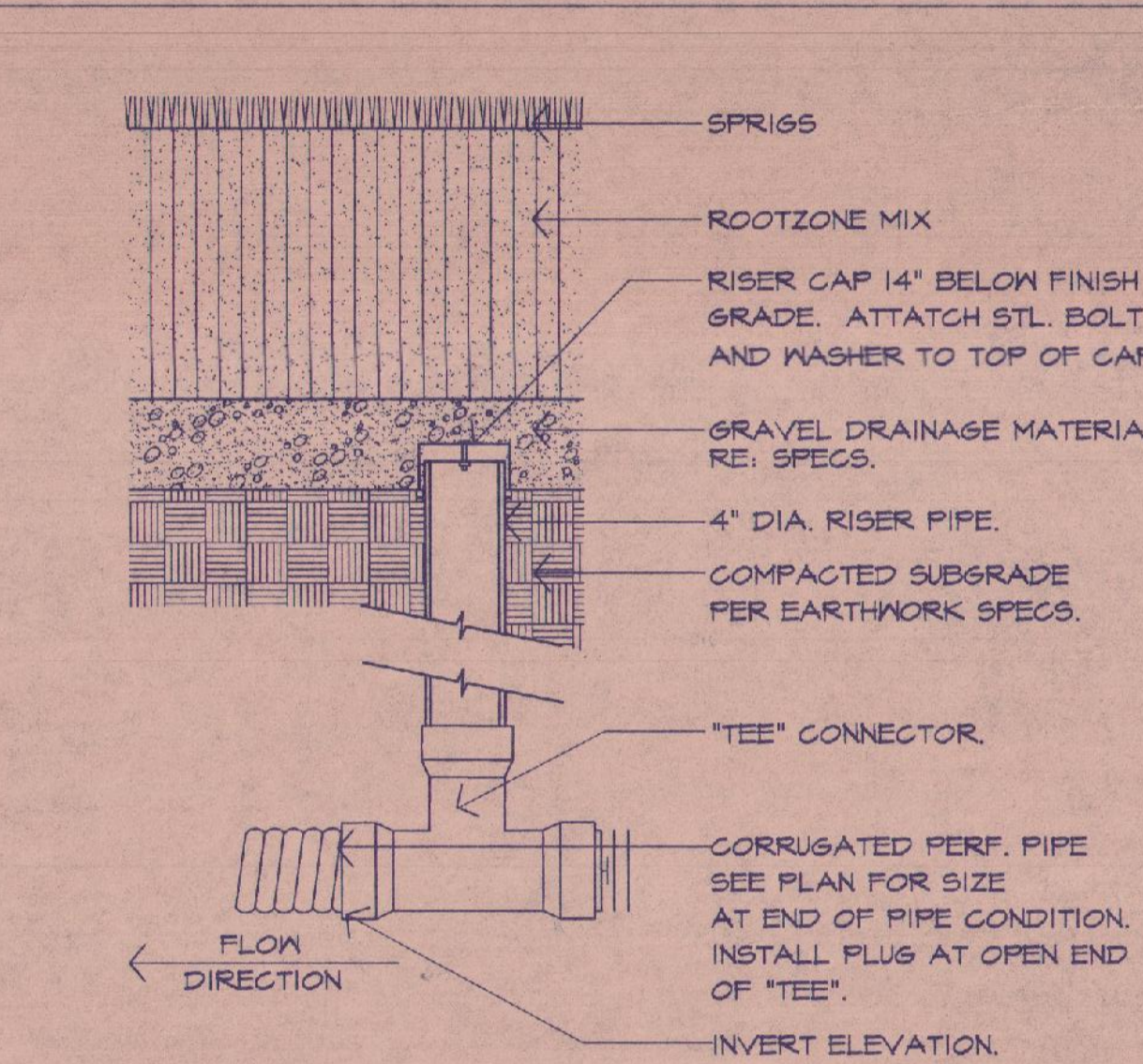
D FIELD MARKER SLEEVE
1-1/2" = 1'-0"



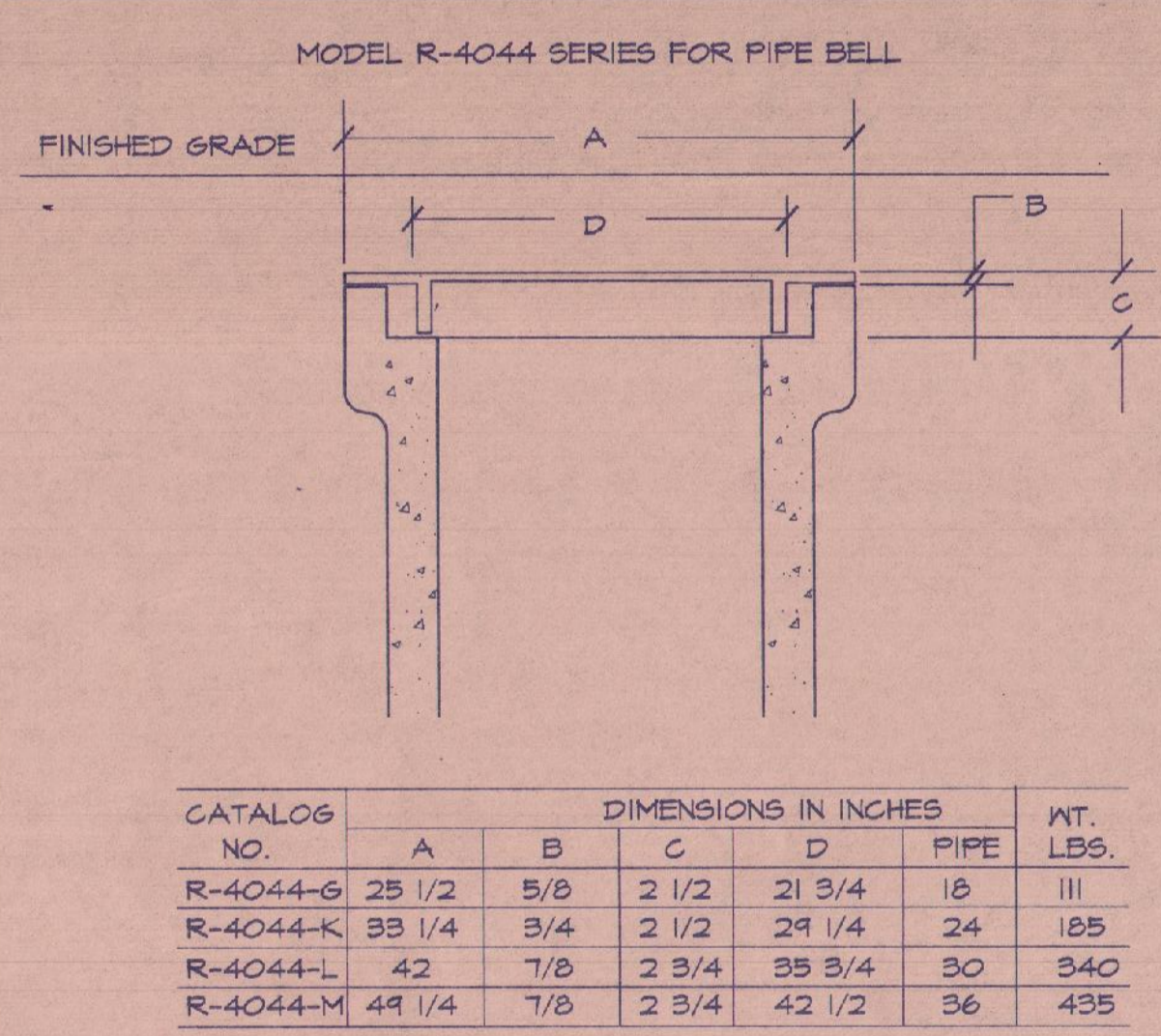
J WARNING TRACK
N.T.S.



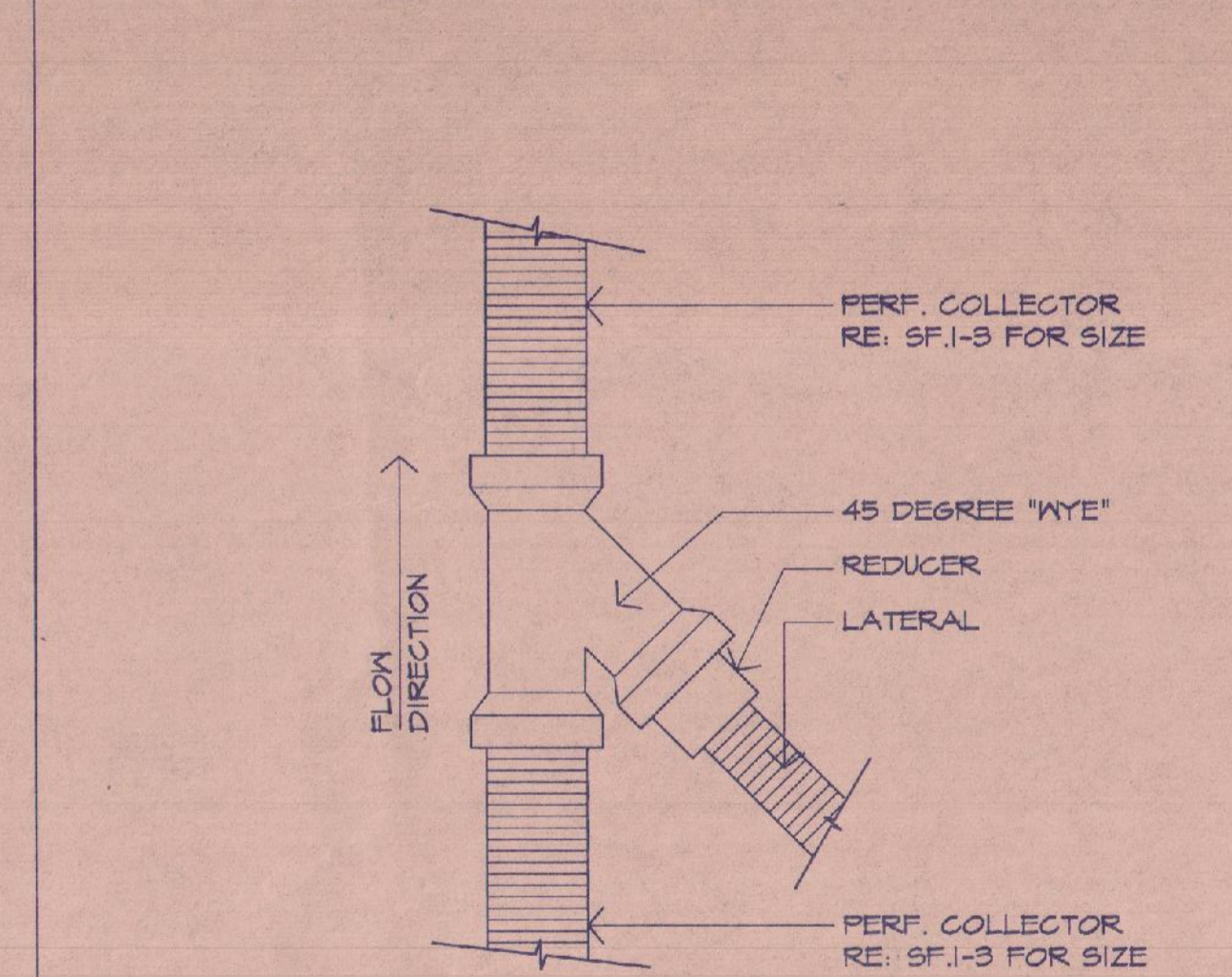
G GOAL POST FOOTING/SLEEVE
N.T.S.



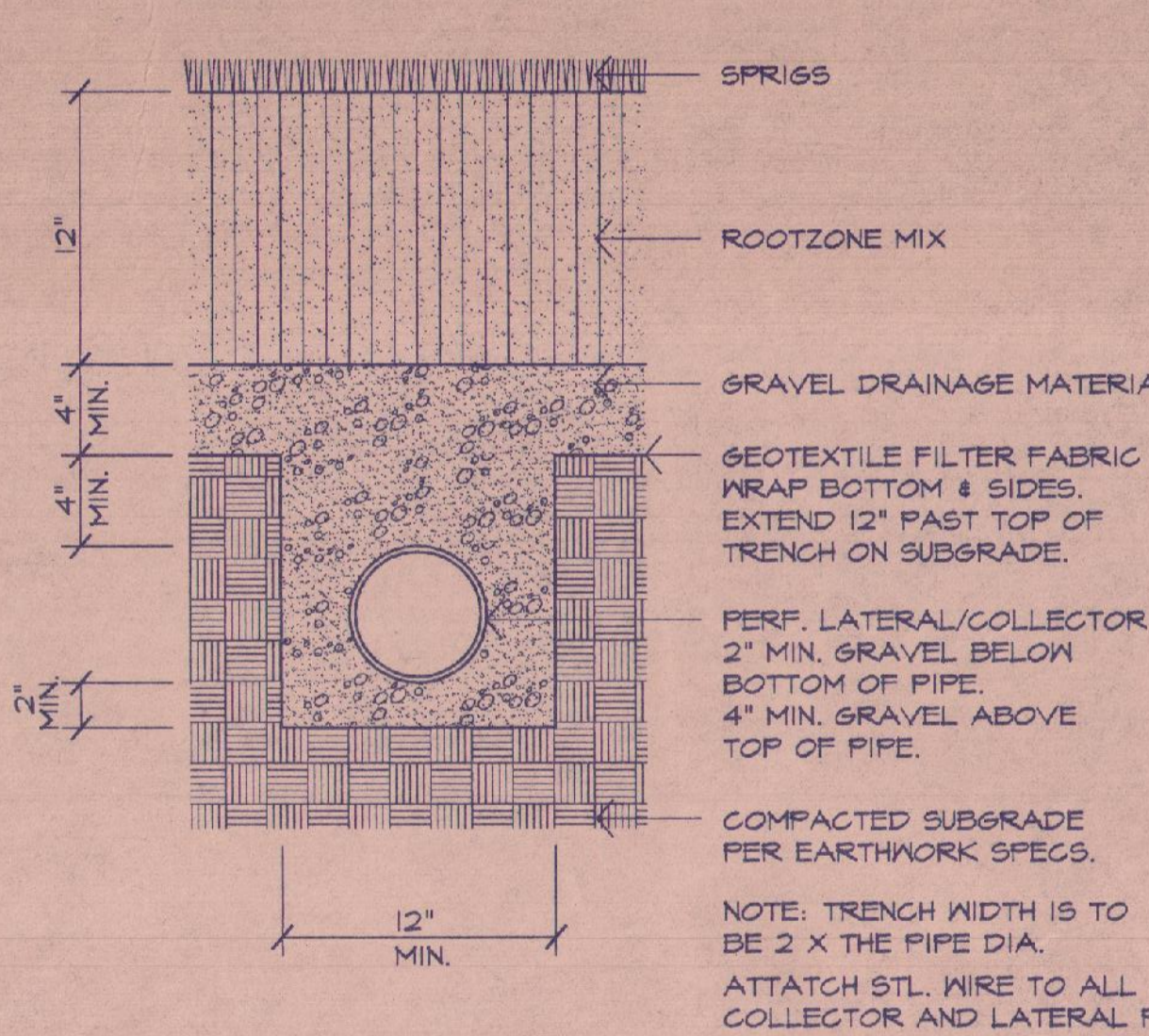
C CLEAN OUT
N.T.S.



I TYPICAL SUMP COVER DETAIL
N.T.S.

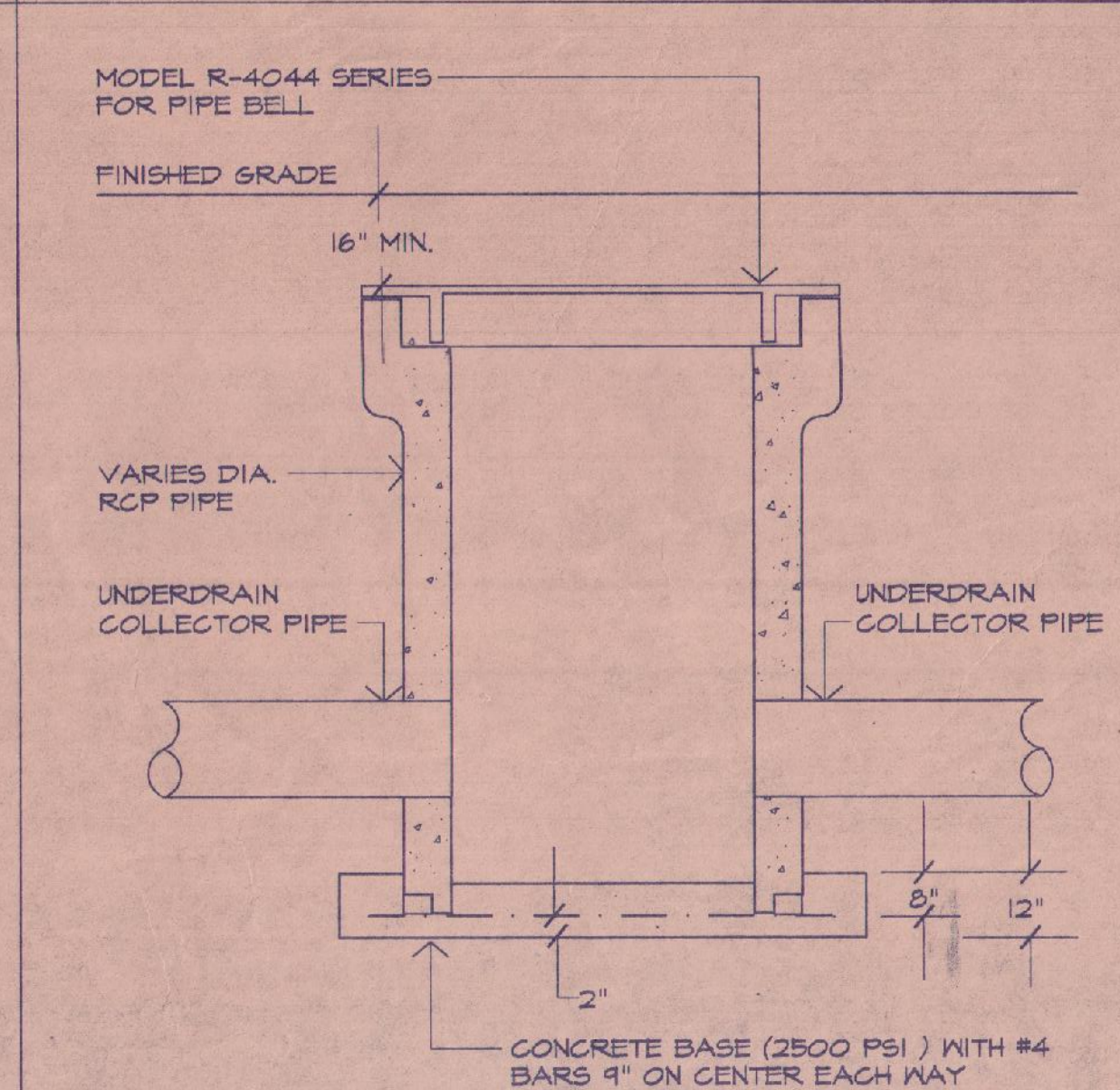


F LATERAL CONNECTIONS
1-1/2" = 1'-0"

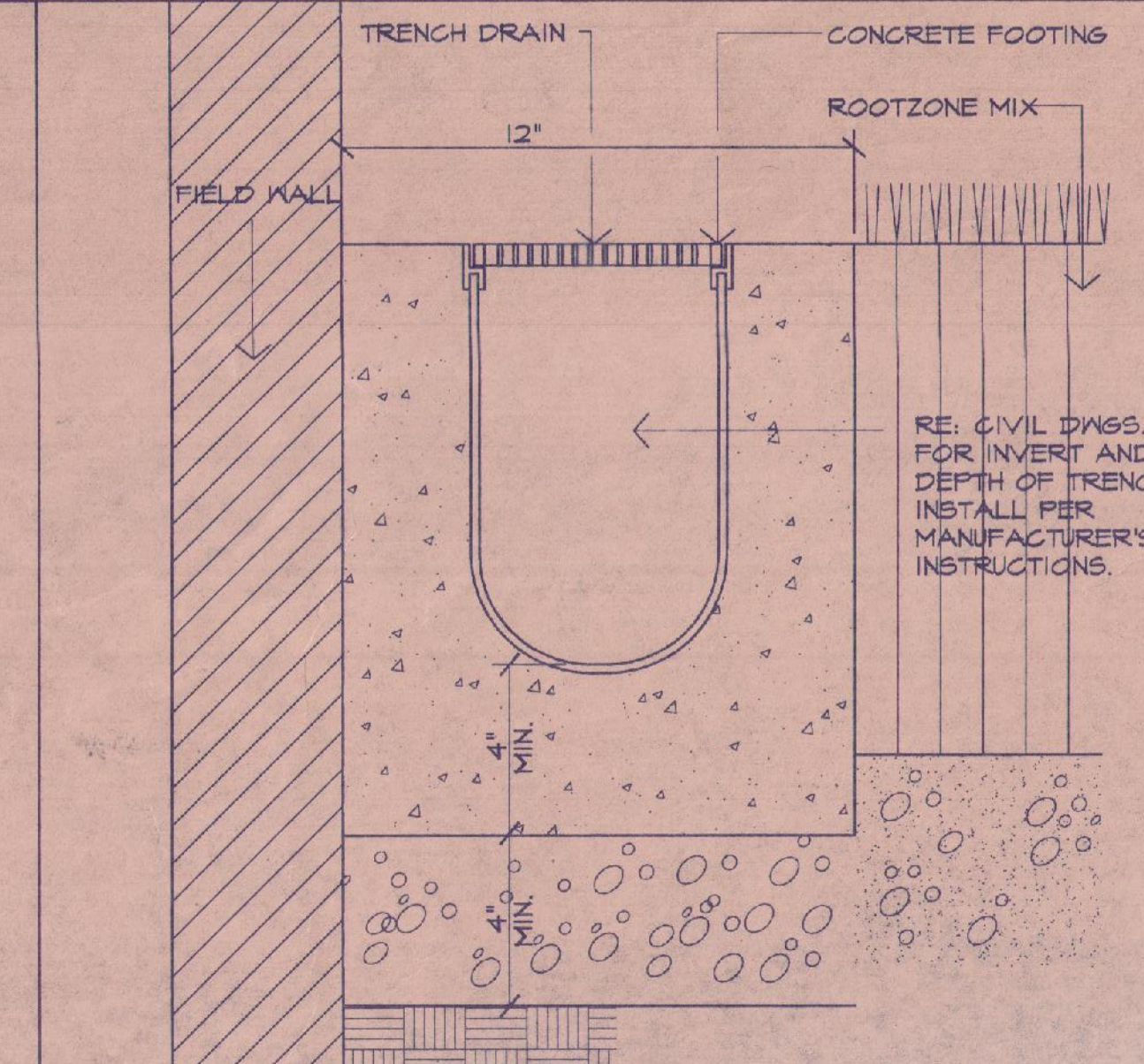


B STADIUM FIELD UNDERDRAINAGE
1-1/2" = 1'-0" © LATERAL

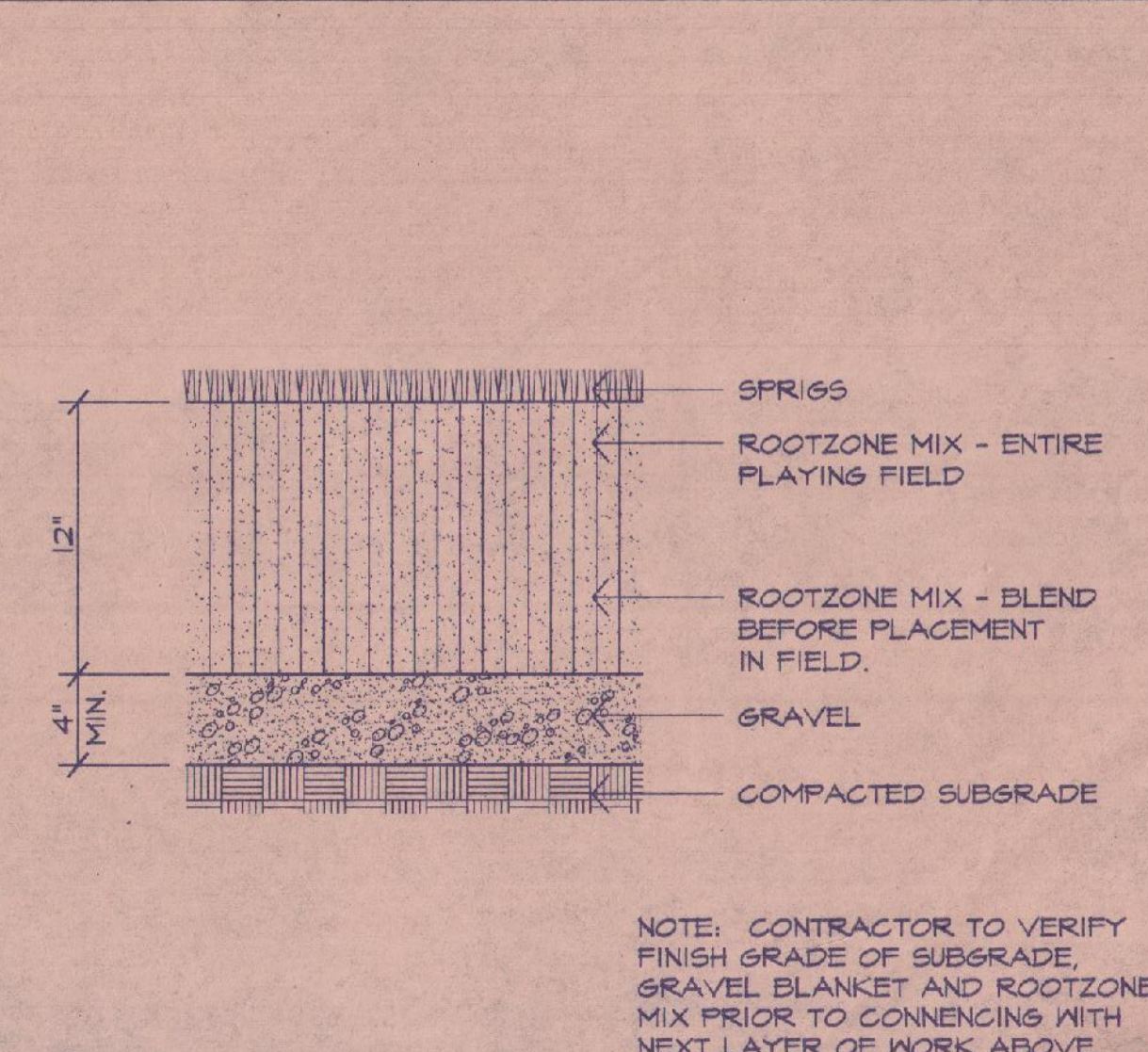
24" R.C.P. 4" THRU 8"	3" WALLS 12" BOTTOM SLAB BASE 4.0'X4.0'
30" R.C.P. 10" THRU 15"	4" WALLS 12" BOTTOM SLAB BASE 5.0'X5.0'
48" MANHOLE 15" THRU 24"	8" WALLS 12" BOTTOM SLAB



H TYPICAL SUMP DETAIL
N.T.S.



E TRENCH DRAIN
3" = 1'-0"



A PLAYING FIELD ROOTZONE MIX
1-1/2" = 1'-0"

K BOUYANCY CALCS. FOR SUMP
RE: H.I. SF. 3-1

h+k
SPORT

HOX SPORT
Architecture, Engineering, Planning,
Interior, Facility Programming
322 West 10th Street, Suite 200
Kansas City, Missouri 64105

LOCAL ARCHITECT
BRAD & ASSOCIATES, ARCHITECT, P.A.
1000 UNDERSON EQUIPMENT, SUITE 202
TAMPA, FLORIDA 33607

STRUCTURAL ENGINEER
WASE & PARTNER, INC.
1101 N. W. 10TH AVE.
MIAMI, FLORIDA 33134-1140

MECHANICAL/ELECTRICAL/PLUMBING
W. S. ENGINEER
401 W. W. WARE, SUITE 400
1000 W. BRIDGE, COVINGTON MISSISSIPPI

CIVIL ENGINEER
PHILIPOTT ENGINEERING
1101 N. W. 10TH AVE.
MIAMI, FLORIDA 33134-1140

LANDSCAPE ARCHITECT
ONEL LANNON & DESIGN SERVICES, INC.
340 W. W. WARE, SUITE 210
TAMPA, FLORIDA 33607

FOOD SERVICE CONSULTANT
CONSULTING INTERNATIONAL, INC.
1050 N. W. 10TH STREET, SUITE 100
OF. ADDRESS: 1100-1010

ATLANTA/ATLANTA/ATLANTA
REGISTRATION: HARRISON, WILLIAMS, INC.
12711 CAMDEN ROAD, SUITE 110
DALLAS, TX 75244

TAMPA NFL STADIUM
for the
TAMPA SPORTS AUTHORITY

PACKAGE
G
SITE WORK

REVISIONS
NO. DATE DESCRIPTION

KEYPLAN

PROJECT NO. 95-380-22
ISSUED BY: HOK SPORT
DRAWN BY: REVIEWED BY:

ISSUED: 2-17-97