

# ROCKY POINT GOLF CLUB HOUSE

CONCEPT DESIGN PACKAGE 12.23.2022

OSPORTS™





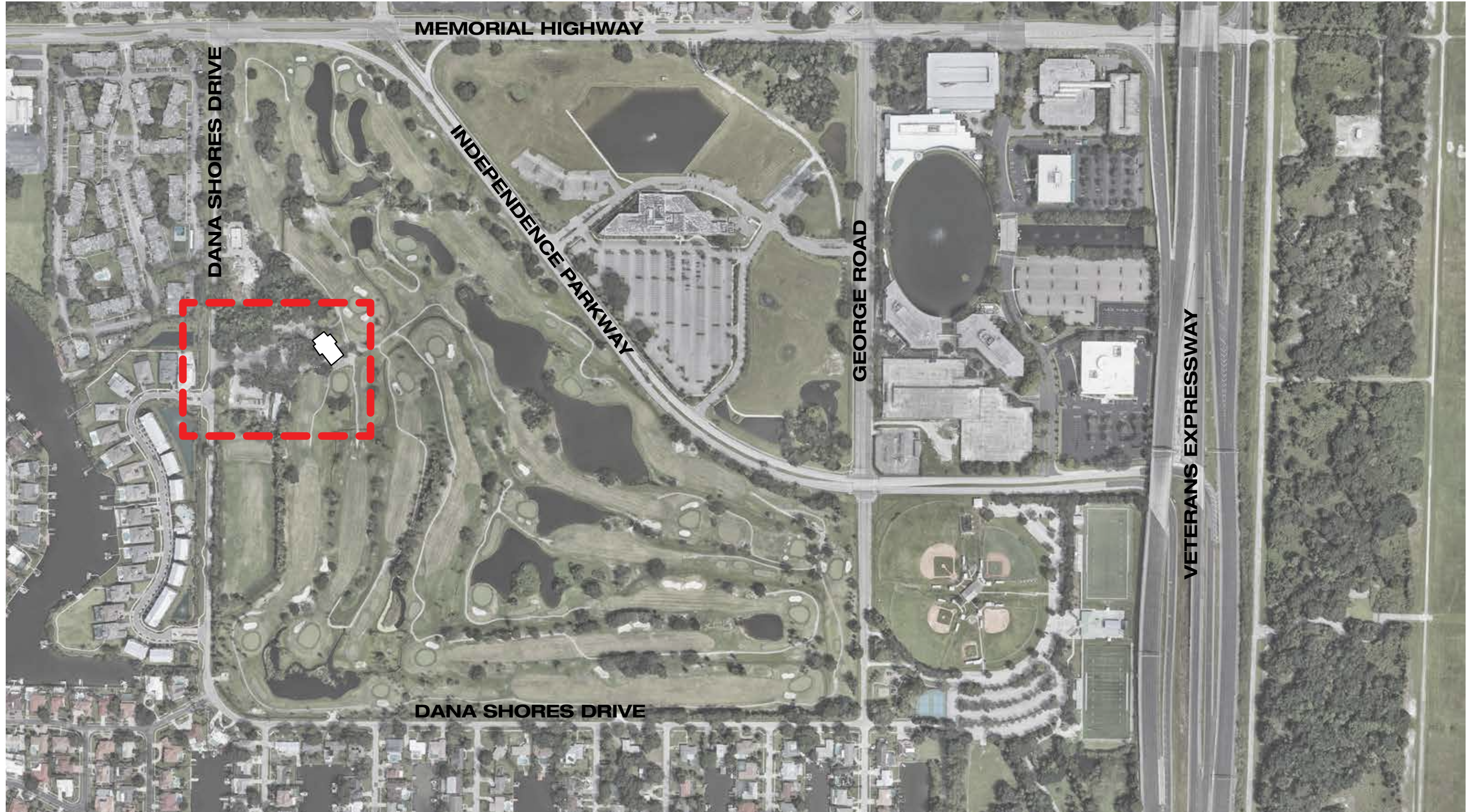


# EXISTING CONDITIONS

OSPORTS™

ROCKY  
POINT  
GOLF

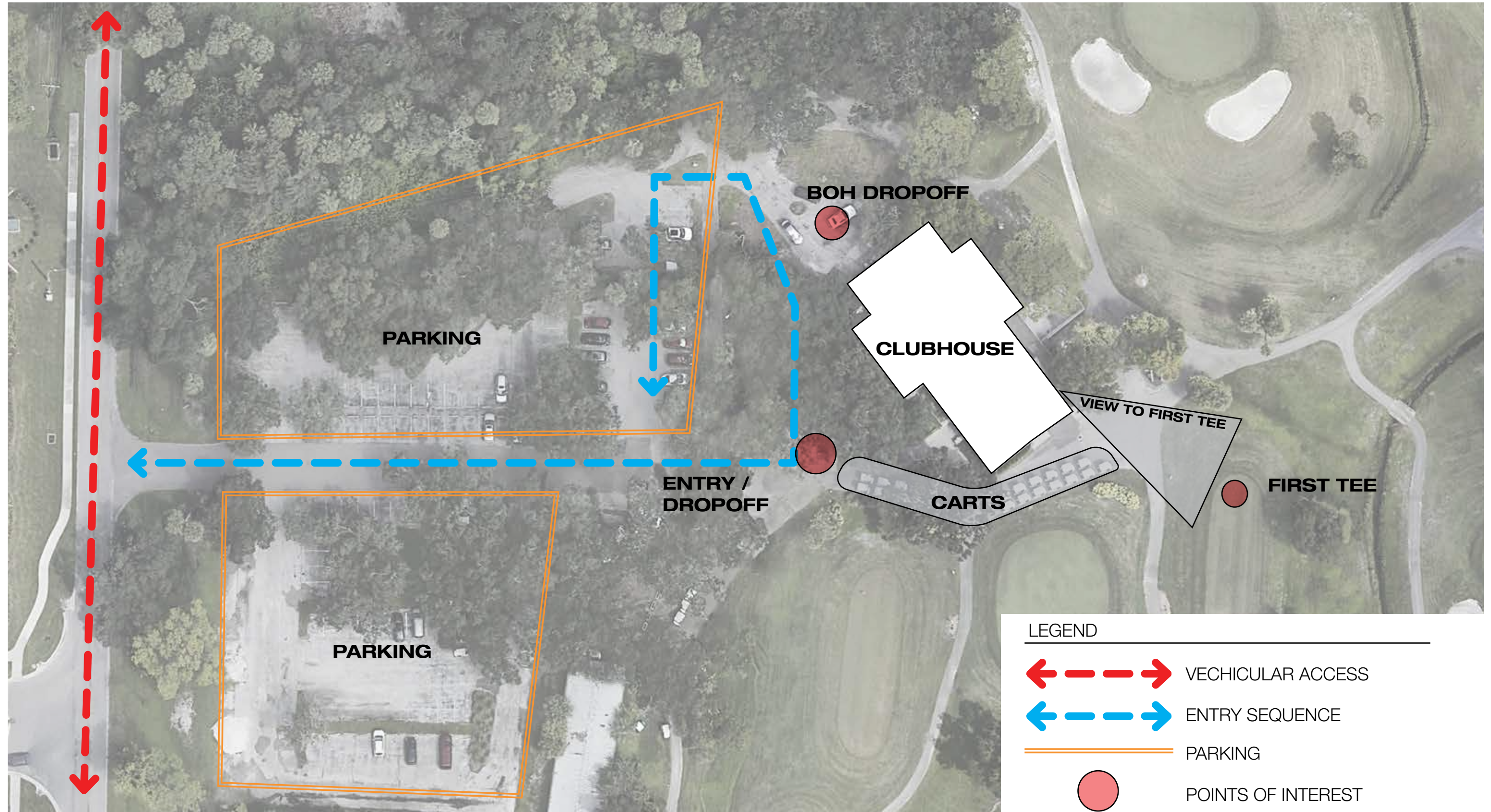
# EXISTING CONDITIONS



OVERALL SITE PLAN



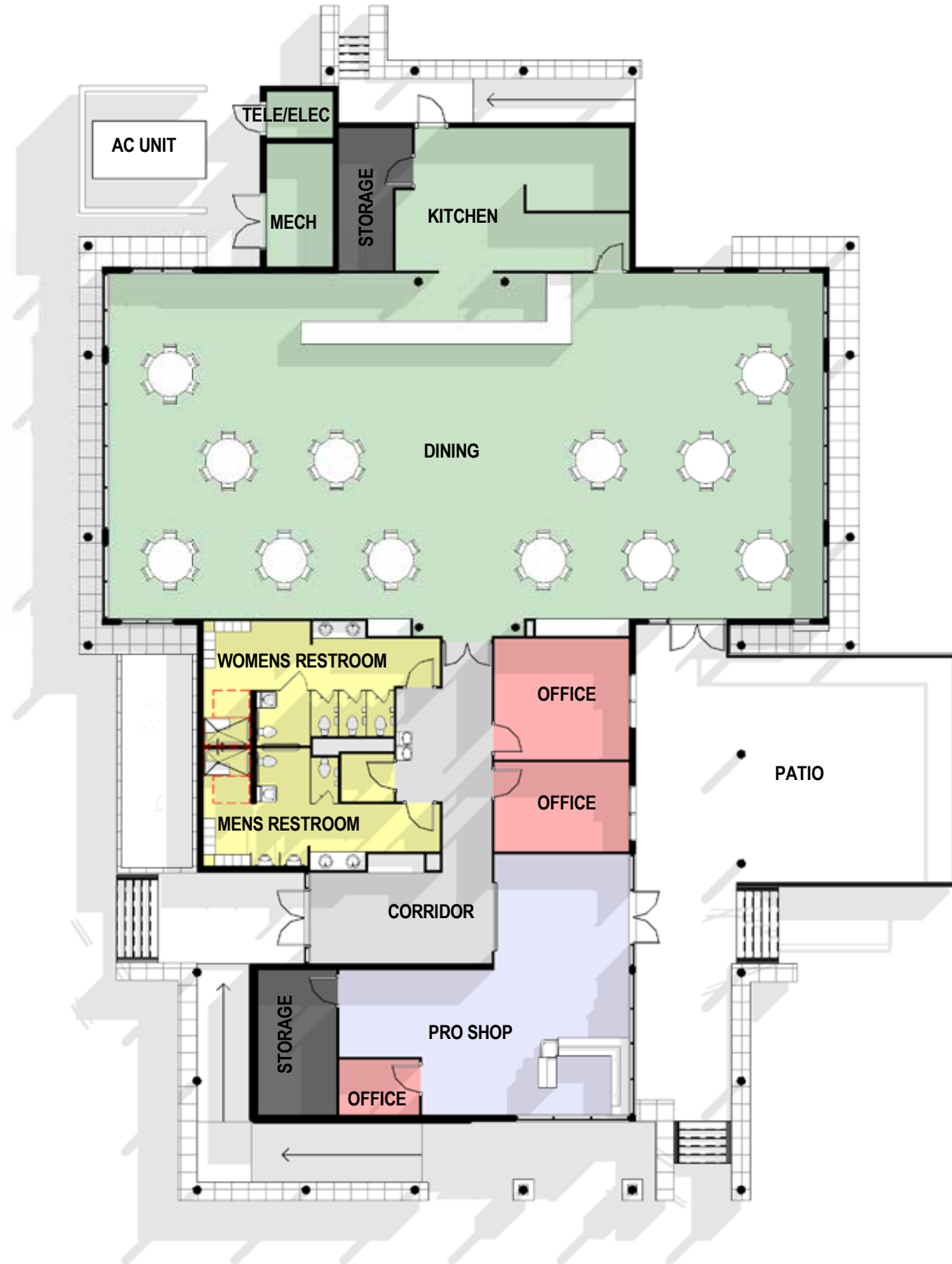
# EXISTING CONDITIONS



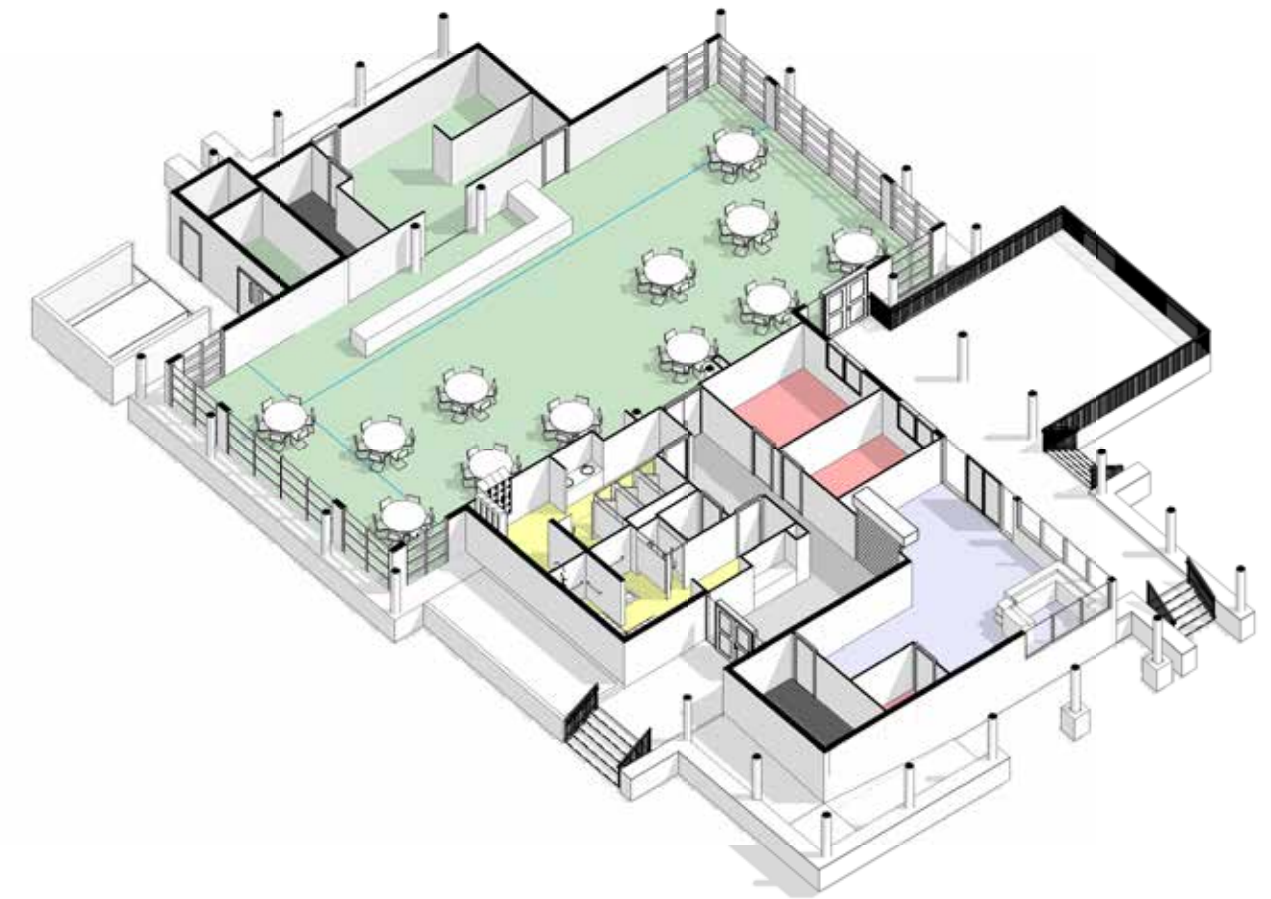
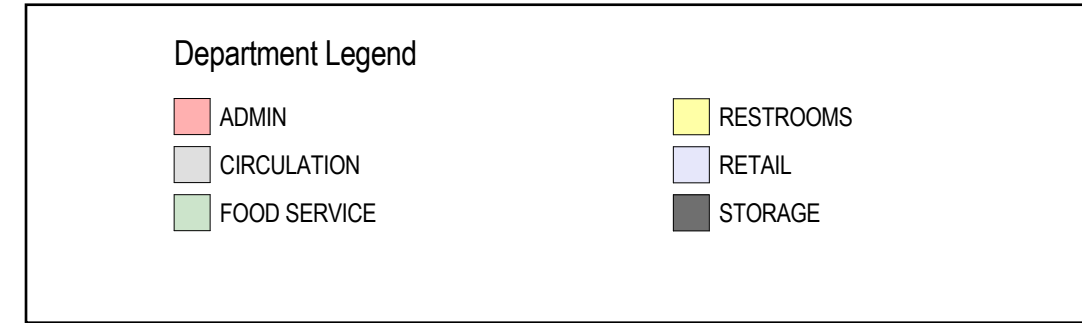
**LEGEND**

- VEHICULAR ACCESS
- ENTRY SEQUENCE
- PARKING
- POINTS OF INTEREST

# EXISTING CONDITIONS



EXISTING PLAN



EXISTING AXONOMETRIC VIEW

# EXISTING CONDITIONS



# EXISTING CONDITIONS





# EXISTING CONDITIONS



# EXISTING CONDITIONS





# GOLF TRENDS & INSPIRATION

OSPORTS™

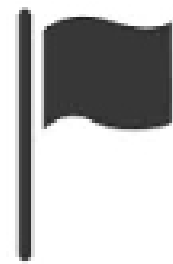
ROCKY  
POINT  
GOLF

# GOLF CLUB TRENDS



## SPECIAL ACCESS MEMBERSHIP

- provide additional perks for additional cost such as catered lunches, reserved preferred tee times, pro shop discounts, limited access to golf pros, 'on board' virtual golf pro access



## STREAMLINE EXPERIENCE

- quicker events by modifying entry sequence and curated arrival experience
- ball location system



## TECHNOLOGY UPGRADE

- robogolfpro : training system to correct swing
- indoor / covered golf practice screen
- self driving golf carts, smart robotic electric bag caddy



## DRIVING RANGE

- driving range canopy
- gamified player experience



## FOOD / BEVERAGE SERVICE

- healthier options: vegan, grilled, pre-packaged to go
- cocktail options, craft beer selections to cater to younger generation



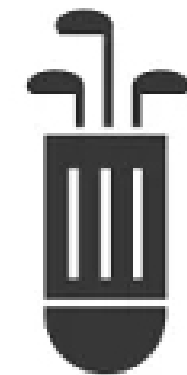
## RETAIL EXPERIENCE

- fashion aesthetic and functional appeal
- specialized clothing to improve spine and neck alignment



## ENVIRONMENTAL IMPACT

- conscious proactive steps for water management, conservation, biodiversity
- carbon-positive course



## CLUB RENTAL

- on-demand rental of premium golf equipment anywhere in US

# PRECEDENTS - ENTRY LANDSCAPE



Feature canopy water feature and rock garden at base of feature



Sculptural wall that becomes the roof & frames specific views, simple grass



Organic boulder mixed with tall grasses; level of clubhouse raised with layered stone wall



Large sculpted boulder & orthogonal terraced planting

# PRECEDENTS - PRO SHOP



club display and full glass details; turf putting portion  
What if entry was turf/grass



Simple white wall with darker finish  
displays and light wood floor

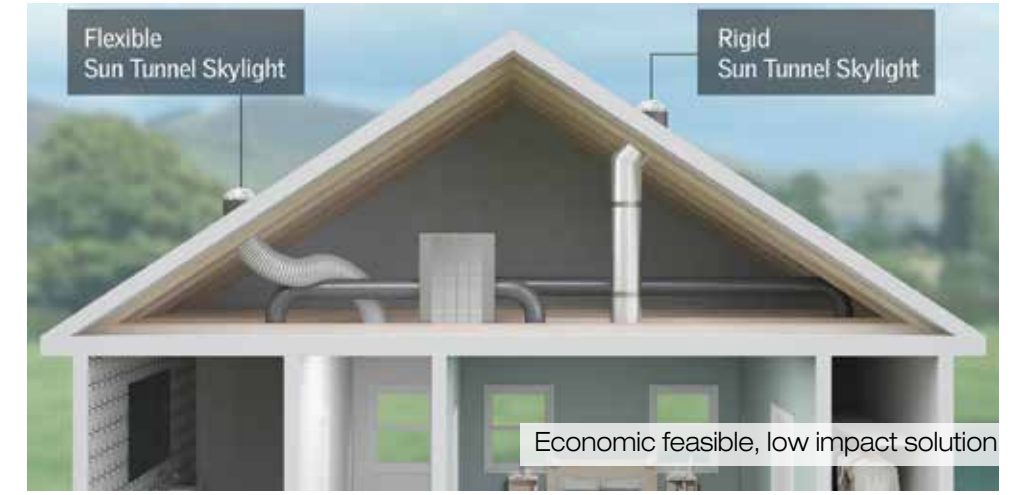


Light interior materials the create an  
airy retail experience

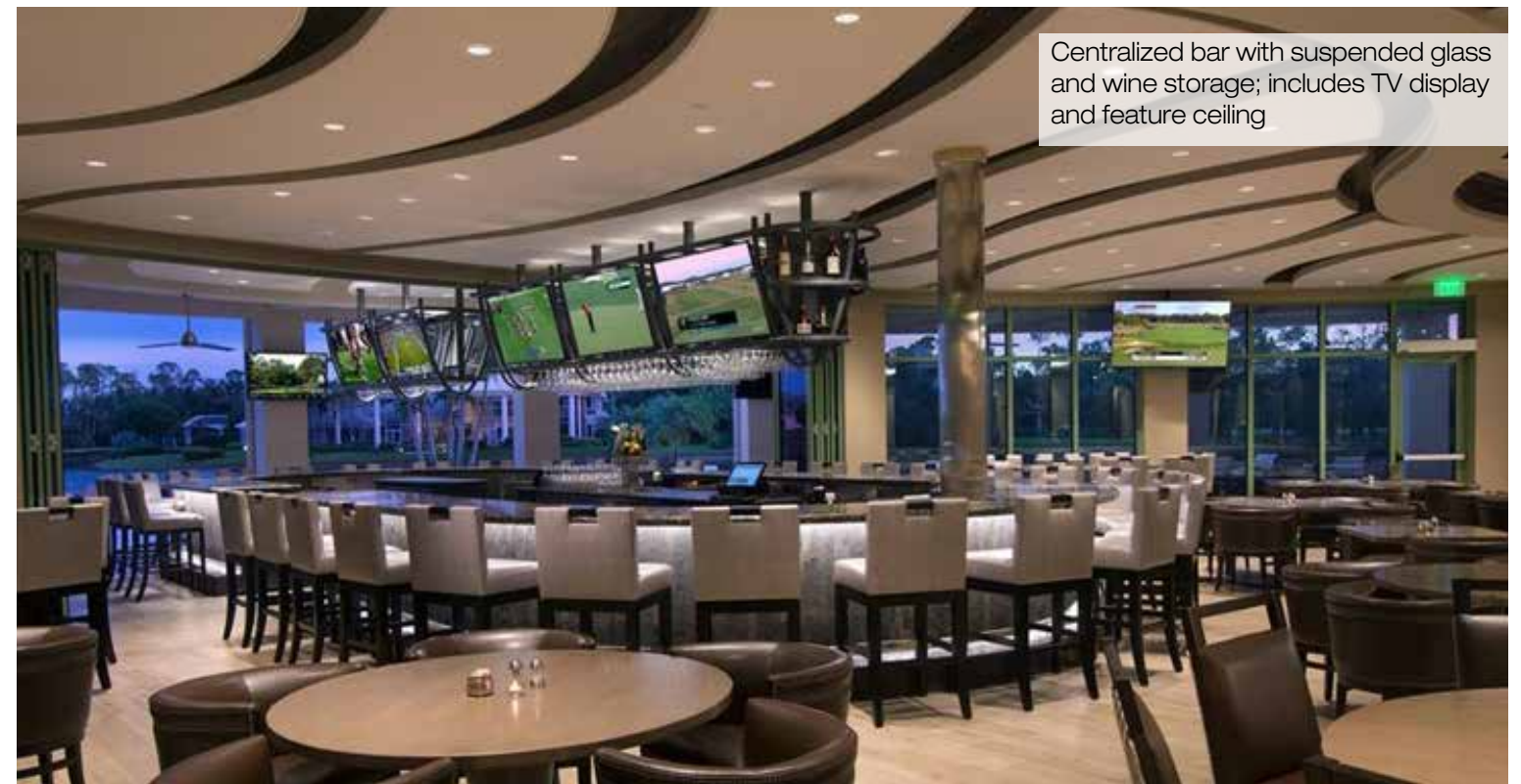
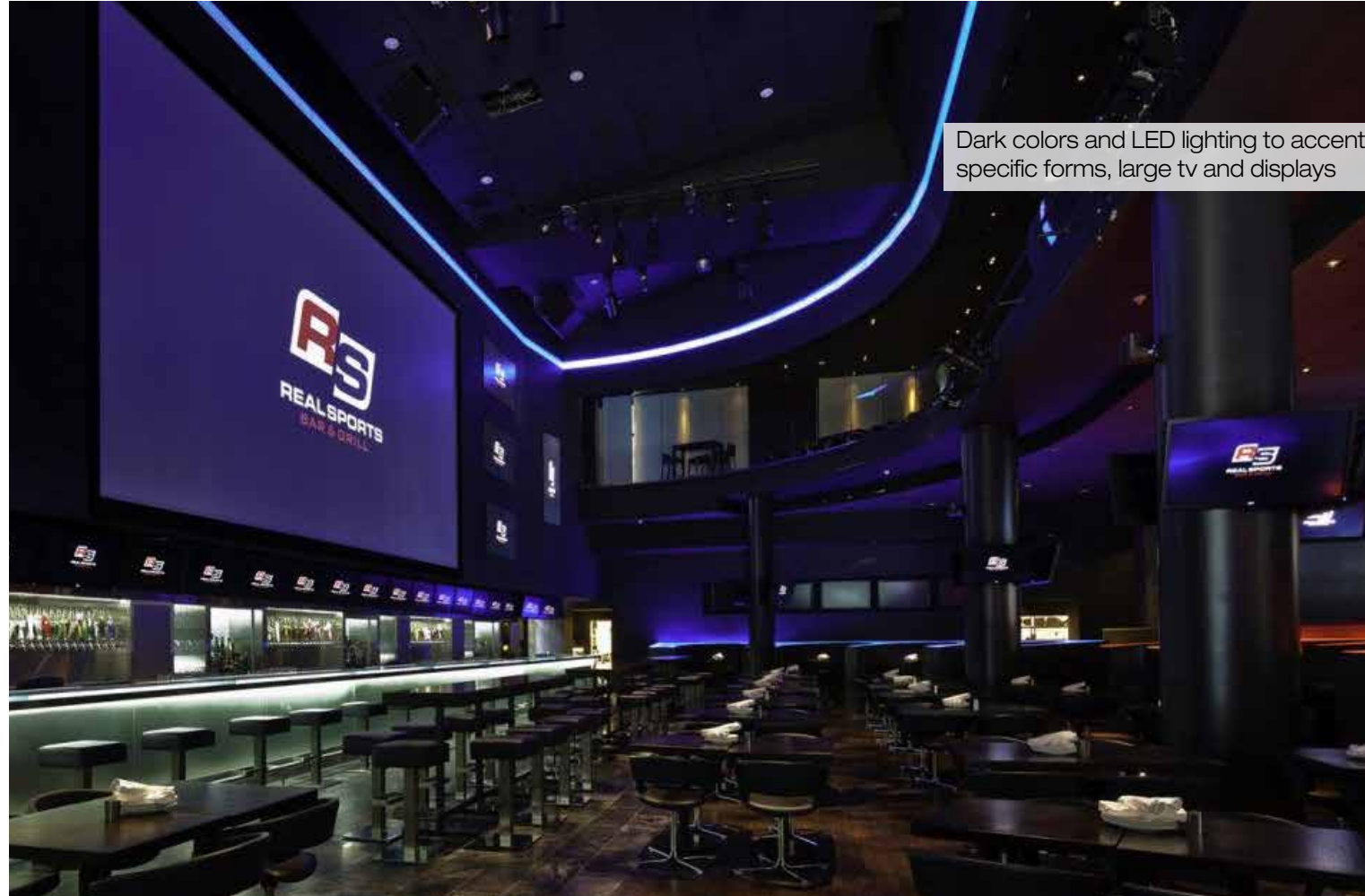


Natural tone finishes on floors, rugs,  
furnishings and ceiling

# PRECEDENTS - SKYLIGHTS



# PRECEDENTS - SPORTS BAR





# PRECEDENTS - PORCH / PATIO



tiered porch seating, elegant hard-scape pavers, integrated lighting



Materials & lounge furniture aid in organizing the spaces while providing elegant social experience



Mix of stone and wood canopy and seating complements the architecture's aesthetic ; social spaces



Modern glass & dark metal exterior materials, light wood structure

# PRECEDENTS - COFFEE SELF SERVE



Permanent station with integrated wall (tile & dark wood wall graphic), ceiling, lighting and floor (durability)



Linear casework station with supportive cabinet storage below, lighting above



Minimal and mobile station with storage below and coffee machines on top, minimal signage



Linear built-in casework with stool seating, wall covering/paint indicates 'coffee area'



PROPOSED OPTION

OSPORTS™

ROCKY  
POINT  
GOLF

# DESIGN OPTION



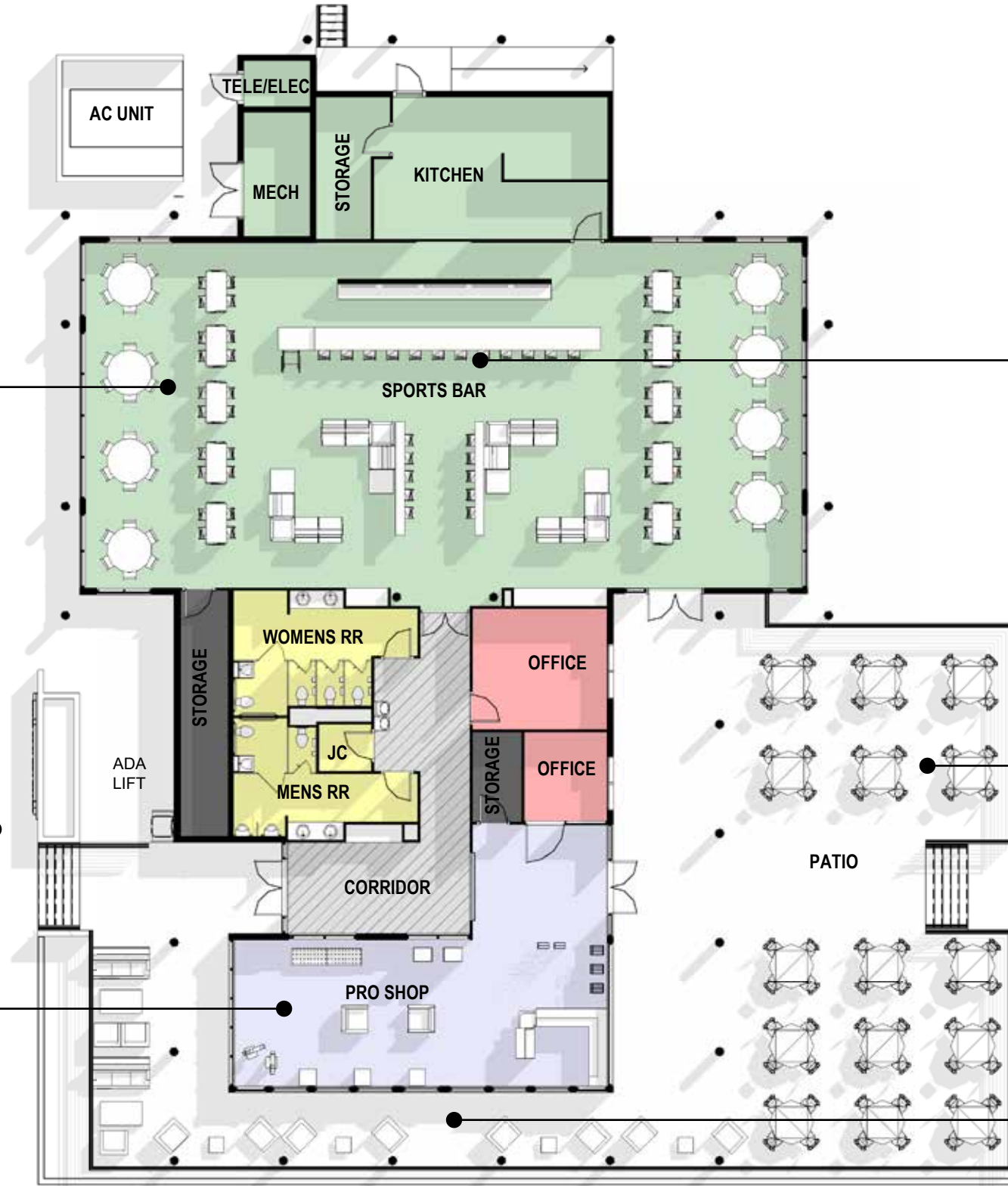
DINING



ENTRY



PRO SHOP



PROPOSED PLAN



BAR



PATIO



LOUNGE PORCH

NEW WRAP  
AROUND PORCH

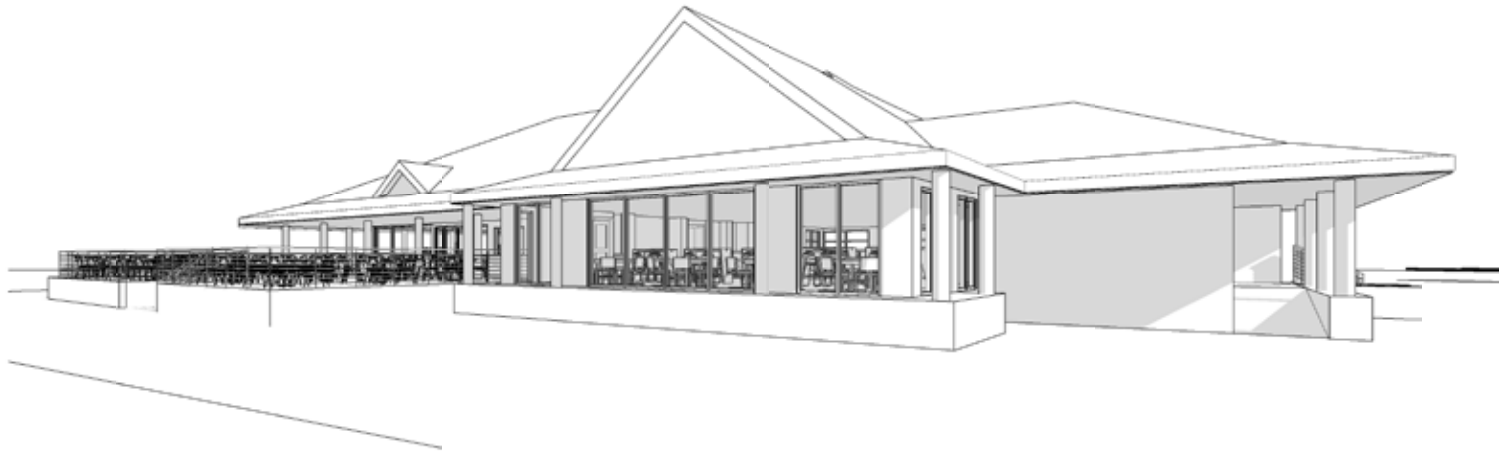
# DESIGN OPTION



WEST ENTRY VIEW



SOUTHWEST VIEW

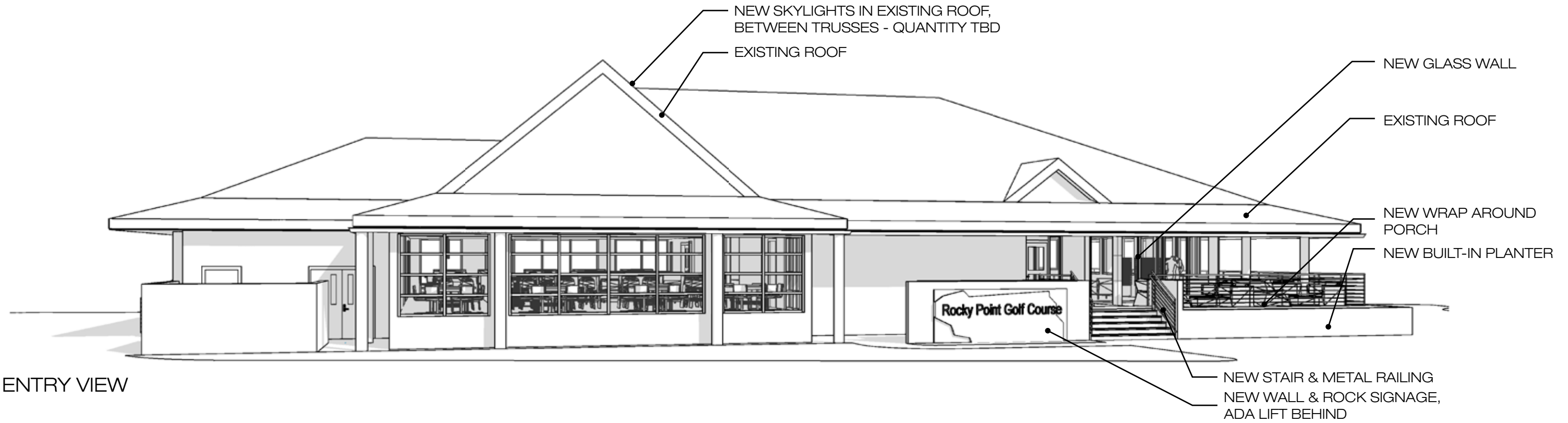


NORTHEAST VIEW



EAST PATIO VIEW

# DESIGN OPTION

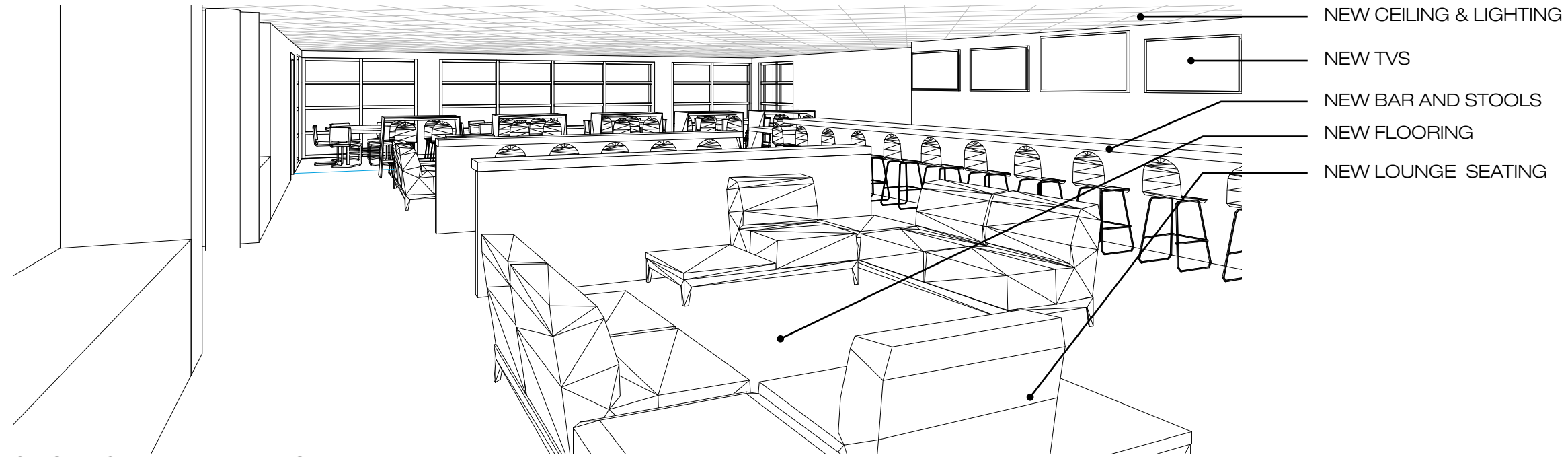


WEST ENTRY VIEW



SOUTHWEST VIEW

# DESIGN OPTION



SPORTS BAR - INTERIOR VIEW



PATIO VIEW



THANK YOU

OSPORTS™

ROCKY  
POINT  
GOLF