

SYMBOL	DESCRIPTION	MOUNTING
	LIGHT FIXTURE, CEILING TYPE LETTER INDICATES TYPE	SEE FIXTURE SCHEDULE
	LIGHT FIXTURE, WALL BRACKET LETTER INDICATES TYPE	SEE FIXTURE SCHEDULE
	FLUORESCENT FIXTURE RECESSED IN CEILING	SEE FIXTURE SCHEDULE
	FLUORESCENT FIXTURE SURFACE MOUNT TO CEILING	SEE FIXTURE SCHEDULE
	SHADED FIXTURES ARE WIRED TO EMERGENCY GENERATOR	SEE FIXTURE SCHEDULE
	FLUORESCENT STRIP FIXTURE	SEE FIXTURE SCHEDULE
	EXIT FIXTURE, SHADING INDICATES SINGLE OR DOUBLE FACE	SEE FIXTURE SCHEDULE
	POLE WITH TOP FIXTURE	SEE FIXTURE SCHEDULE
	POLE WITH ARM MOUNTED FIXTURE	SEE FIXTURE SCHEDULE
	EMERGENCY BATTERY UNIT	SEE FIXTURE SCHEDULE
	SWITCH, SINGLE POLE-LETTER INDICATES LIGHTS CONTROLLED	48" AFF OR AS NOTED
	SWITCH, TWO POLE	48" AFF OR AS NOTED
	SWITCH, THREE WAY	48" AFF OR AS NOTED
	SWITCH, FOUR WAY	48" AFF OR AS NOTED
	DIMMER SWITCH	48" AFF OR AS NOTED
	SWITCH WITH FAN RELAY	48" AFF OR AS NOTED
	SWITCH, KEY OPERATED	48" AFF OR AS NOTED
	TIME DELAY SWITCH	48" AFF OR AS NOTED
	SWITCH WITH PILOT LIGHT	48" AFF OR AS NOTED
	SINGLE RECEPTACLE, 125V, 15A	18" AFF OR AS NOTED
	DUPLEX RECEPTACLE, 125V, 15A	18" AFF OR AS NOTED
	DUPLEX RECEPTACLE, 125V, 15A (ONE-HALF SWITCHED)	44" AFF OR 6" ABOVE COUNTER
	DUPLEX RECEPTACLE, 125V, 15A (PEDESTAL BOX)	18" AFF OR AS NOTED
	DUPLEX RECEPTACLE, 125V, 15A (FLUSH FLOOR BOX)	FLUSH WITH FLOOR
	DUPLEX RECEPTACLE, 125V, 15A ISOLATED GROUND TYPE	18" AFF OR AS NOTED
	DUPLEX RECEPTACLE, 125V, 15A ISOLATED GROUND TYPE	44" AFF OR AS NOTED
	RECEPTACLE, 1--125/250V, 20A, 2P3W	18" AFF OR AS NOTED
	QUADRUPLE RECEPTACLE, 125V, 15A	18" AFF OR AS NOTED
	QUADRUPLE RECEPTACLE, 125V, 15A (PEDESTAL BOX)	44" AFF OR 6" ABOVE COUNTER
	QUADRUPLE RECEPTACLE, 125V, 15A (FLUSH FLOOR BOX)	CONDUIT AND ON FLOOR SERVICE FITTING
	RECEPTACLE, 1--125/250V, 30A, 2P4W (DRYER)	18" AFF OR AS NOTED
	RECEPTACLE, 1--125/250V, 50A, 2P4W (RANGE)	18" AFF OR AS NOTED
	SPECIAL RECEPTACLE AS NOTED	18" AFF OR AS NOTED
	PANELBOARD 120/208V OR 120/240V	SEE PANEL SCHEDULE
	PANELBOARD 277/480V	SEE PANEL SCHEDULE
	DISCONNECT SWITCH SIZE/ FUSE/ # OF POLES	TOP 60" AFF OR AS NOTED
	DISCONNECT SWITCH WITH MOTOR STARTER	TOP 60" AFF OR AS NOTED
	MOTOR STARTER	AS NOTED
	MOTOR STARTER SWITCH WITH OVERLOAD RELAYS AS REQUIRED	AS NOTED
	MOTOR	AS NOTED
	ELECTRIC DUCT HEATER	AS NOTED
	OUTLET BOX WITH FLEXIBLE CONDUIT CONNECTION TO EQUIPMENT	AS NOTED OR REQUIRED
	OUTLET, JUNCTION OR PULL BOX	AS NOTED OR REQUIRED
	DRIVEN GROUND, UNLESS NOTED OTHERWISE	
	CONDUIT CONCEALED IN CEILING SPACE OR WALL	NUMBER OF WIRES INDICATED AS FOLLOWS
	CONDUIT IN FLOOR SLAB, CEILING SLAB OR UNDERGROUND	TWO WIRES
	HOME RUN TO PANEL (HASH MARKS INDICATE NUMBER OF WIRES)	THREE WIRES
	CONDUIT RUN EXPOSED	FOUR WIRES
	LOW VOLTAGE WIRING	
	ISOLATED NEUTRAL AND SEPARATE GROUND CONDUCTORS (CLEAN CIRCUIT)	GROUNDING CONDUCTORS NOT SHOWN EXCEPT FOR CLEAN CIRCUITS
	CONDUIT RUN UP	AS SHOWN
	CONDUIT RUN DOWN	AS SHOWN

SYMBOL	DESCRIPTION	MOUNTING
	TELEPHONE OUTLET (VOICE)	18" AFF OR AS NOTED
	TELEPHONE OUTLET (VOICE)	54" AFF OR AS NOTED
	TELEPHONE OUTLET (VOICE)	44" AFF OR 6" ABOVE COUNTER
	TELEPHONE OUTLET (VOICE)	IN FLOOR BOX
	COMBO VOICE/DATA/TV OUTLET W/ COVER PLATE (SEE PLANS)	18" AFF OR AS NOTED
	FIRE FIGHTER TELEPHONE JACK	54" AFF OR AS NOTED
	COMMUNICATION OUTLET	18" AFF OR AS NOTED
	SOUND SYSTEM CEILING MOUNTED SPEAKER	RECESS FLUSH IN CEILING
	SOUND SYSTEM VOLUME CONTROL SWITCH	48" AFF OR AS NOTED
	SOUND SYSTEM MICROPHONE PAGING OUTLET	18" AFF OR AS NOTED
	SOUND SYSTEM WALL MOUNTED SPEAKER	76" AFF OR AS NOTED
	CABLE TV TERMINAL BOARD	AS NOTED
	TELEPHONE TERMINAL BOARD	AS NOTED
	TELEVISION OUTLET	18" AFF OR AS NOTED
	CLOSED CIRCUIT TELEVISION MONITOR	AS NOTED
	CLOSED CIRCUIT TELEVISION CAMERA	AS NOTED
	FIRE ALARM MANUAL PULL STATION	48" AFF OR AS NOTED
	FIRE ALARM SPEAKER/FLASHING LIGHT COMBINATION SIGNAL	80" AFF OR SEE NOTE BELOW
	MINI FIRE ALARM SPEAKER/FLASHING LIGHT COMBINATION SIGNAL	80" AFF OR SEE NOTE BELOW
	FIRE ALARM FLASHING LIGHT SIGNAL	SEE NOTE BELOW
	FIRE ALARM SMOKE DETECTOR	ON CEILING OR AS NOTED
	FIRE ALARM SMOKE DETECTOR (WALL MOUNTED)	WALL MTD. 6" BELOW CLG.
	WALL MOUNTED SMOKE DETECTOR WITH SOUNDER BASE	WALL MTD. 6" BELOW CLG.
	FIRE ALARM HEAT DETECTOR	ON CEILING OR AS NOTED
	FIRE ALARM CONTROL PANEL	60" AFF TO TOP OR AS NOTED
	FIRE ALARM ANNUNCIATOR	60" AFF TO TOP OR AS NOTED
	FLOW AND TAMPER SWITCH	AS NOTED
	DUCT DETECTOR REMOTE TEST/ RESET SWITCH	48" AFF OR AS NOTED
	DUCT TYPE SMOKE DETECTOR	IN HVAC DUCTWORK
	SMOKE DAMPER	IN HVAC DUCTWORK
	RELAY	AS NOTED
	MAGNETIC DOOR HOLDER	72" AFF OR AS NOTED
	EXTERIOR F/A AUDIO SIGNAL	90" AFF OR AS NOTED
	ELECTRIC WATER GONG	AS NOTED
	PUSH BUTTON	48" AFF OR AS NOTED
	KEYPAD	48" AFF OR AS NOTED
	MAG-LOCK CONTACT	AS NOTED

ALL MOUNTING HEIGHTS SHOWN ARE TO THE CENTERLINE OF THE DEVICE UNLESS NOTED OTHERWISE

NOTE - THE DEVICE SHALL BE PLACED 80 INCHES ABOVE THE HIGHEST FLOOR LEVEL WITHIN THE SPACE OR 6 INCHES BELOW THE CEILING, WHICHEVER IS LOWER.

ABBREVIATIONS:

- AVAILABLE FAULT CURRENT
- ABOVE FINISHED FLOOR
- AIR HANDLING UNIT
- BELOW FINISHED GRADE
- CONDUIT
- COOL WHITE
- DOOR ALARM CONTROL PANEL
- DOWN
- EXHAUST FAN
- EQUIPMENT GROUND
- ENCLOSURE
- ELECTRIC WATER COOLER
- ELECTRIC WATER HEATER
- EXPLOSION PROOF
- FAN COIL UNIT
- FRACTIONAL HORSE POWER
- FULL LOAD AMPERES
- GROUND
- HEATING, VENTILATING, AIR CONDITIONING
- JUNCTION BOX
- LOCKED ROTOR AMPERES
- MAIN CIRCUIT BREAKER
- MAIN LUGS ONLY
- NEUTRAL
- NIGHT LIGHT
- OUTLET BOX
- PULL BOX, PUSHBUTTON
- PAY STATION
- RECEPTACLE
- SUPPLY FAN
- SUPPLY CATIONS
- SMOKE WARNING EMERGENCY CALL SYSTEM
- TWISTED PAIR
- TELEPHONE TERMINAL BOARD
- TELEVISION TERMINAL BOARD
- VERTICAL
- WATT METER
- WEATHERPROOF
- WARM WHITE
- TRANSFORMER

CKT NO.	LOAD	OPT	CODE	KVA	WIRE	BRKR	PHASE	BRKR	WIRE	KVA	CODE	OPT	LOAD	CKT NO.
1	EXISTING LOAD		R	1.20	12	20	A	20	12	1.08	R		WOMEN RESTROOM	2
3	EXISTING LOAD		R	2.20	12	20	B	20	12	1.20	L		WOMEN RESTROOM	4
5	EXISTING LOAD		R	3.20	12	20	C	20	12	1.08	R		RES. DESK	6
7	RECI. PUMP WATER HEATER		E	0.50	12	20	A	20	12	1.08	R		MEN RESTROOM	8
9	EXISTING LOAD		R	1.30	12	20	B	20	12	1.20	R		EXISTING LOAD	10
11	EXISTING LOAD		L	1.00	12	20	C	20	12	1.20	R		EXISTING LOAD	12
13	EXISTING LOAD		L	1.00	12	20	A	20	12	1.20	R		EXISTING LOAD	14
15	EXISTING LOAD		R	1.08	12	20	B				I		NO SPACE	16
17	EXISTING LOAD		R	1.30	12	20	C	20	12	1.20	L		MEN REST, HALLWAY FAN	18
19			E	1.60	12	20	A	2P	12	1.60	E		EXISTING LOAD	22
21	EXISTING LOAD		E	1.60	12	20	B	20	12	1.20	E		EXISTING LOAD	24
23	EXISTING LOAD		E	3.80	8	3P	C	20	12	1.20	R		EXISTING LOAD	26
25	EXISTING LOAD		E	3.80	8	40	A	20	12	1.20	R		EXISTING LOAD	28
27			E	3.80	8	40	B	20	12	1.08	R		RECEP BEHIND FRONT DESK	30
29			H	5.70	6	3P	A	3P	12	1.90	H		EXISTING LOAD	32
31	CU-1		H	5.70	6	60	B	20	12	1.90	H		AIR HANDLER	34
33			H	5.70	6	60	B	20	12	1.90	H		EXISTING LOAD	36
35	STORAGE AND ATM RECEIPT	NEW	R	0.36	12	20	A	2P	10	2.50	E		WATER HEATER	38
37	SPACE		I				A	30	10	2.50	E		WATER HEATER	40
39	SPACE		I				B	3P	6	5.70	H		CU-1B	42
41	SPACE		I				C	6	5.70	H			CU-1B	44
	ELECTRIC HEAT STRIPE		H	19.20	3/0	3P	A	60	6	5.70	H		NO SPACE	46
			H	19.20	3/0	200	B				I		NO SPACE	48

MANUFACTURER: SQUARE D MLO OR MCB: MCB PANEL: A VOLTAGE: 120/208V, 3 PH, 4 WIRE
TYPE: NQ- EXISTING FEED: TOP MAIN AMPS: 400 AMP FEEDER: 400 AMP
MOUNTING: SURFACE CU / AL WIRE: CU AIC RATING: EXISTING SPACES: 54
LOCATION: 107 - STORAGE NOTES:

BREAKER OPTIONS: NEW PROVIDE NEW BREAKER ALL BREAKERS ARE EXISTING TO REMAIN UNLESS OTHERWISE NOTED

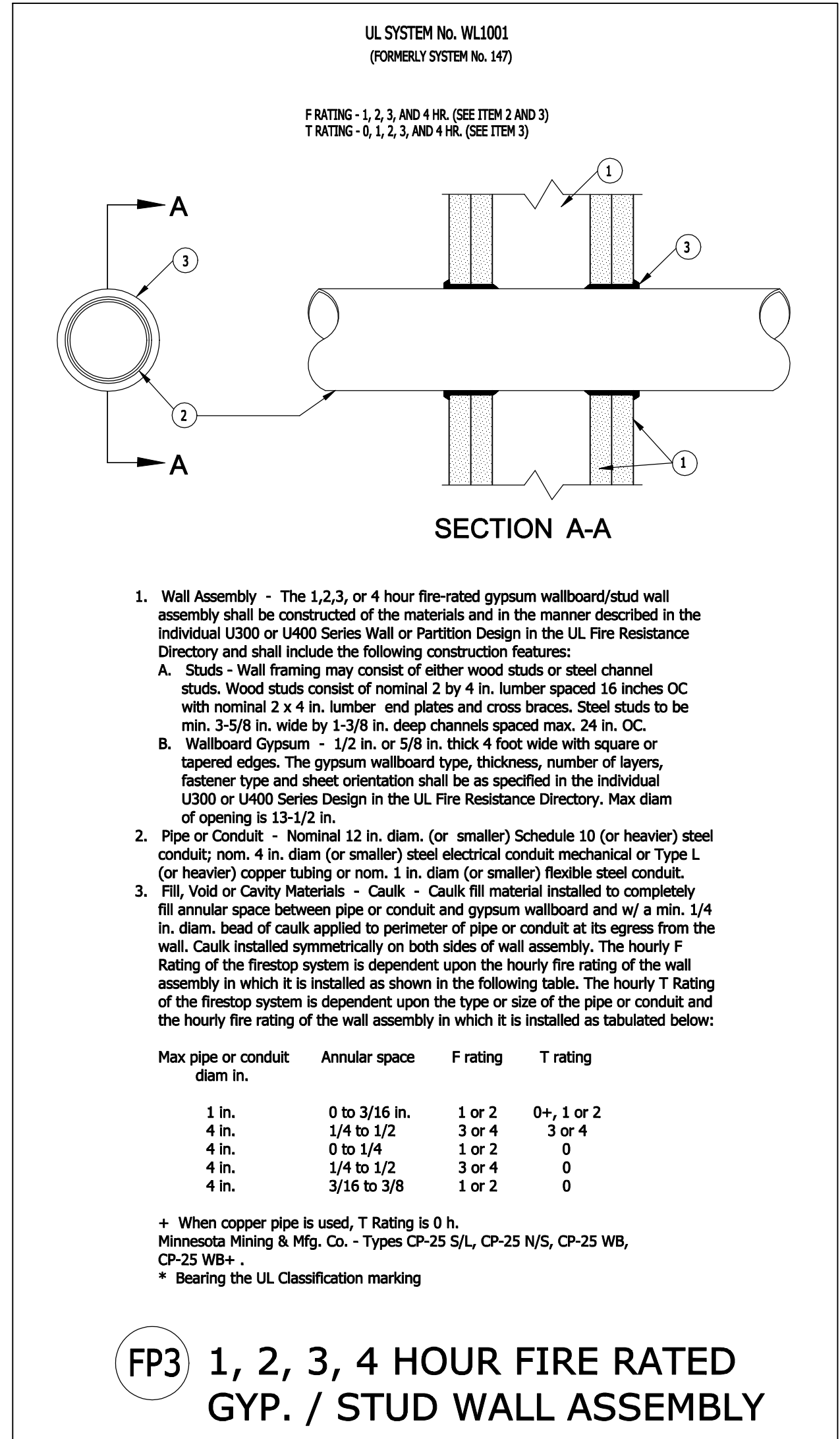
DEMAND

(L) LIGHTING:	4.40	X	1.25	=	5.50
(R) RECEPTACLES:	10.00	X	1.00	=	10.00
(R) RECEPTACLES:	10.96	X	0.50	=	5.48
(H) HVAC:	97.50	X	1.00	=	97.50
(E) EQUIPMENT:	22.90	X	1.00	=	22.90
(K) KITCHEN EQUIP:	0.00	X	0.65	=	0.00
(S) SUBFEED:	0.00	X	1.00	=	0.00
LARGEST MOTOR:	0.00	X	0.25	=	0.00
TOTAL DEMAND KVA:	141.38				

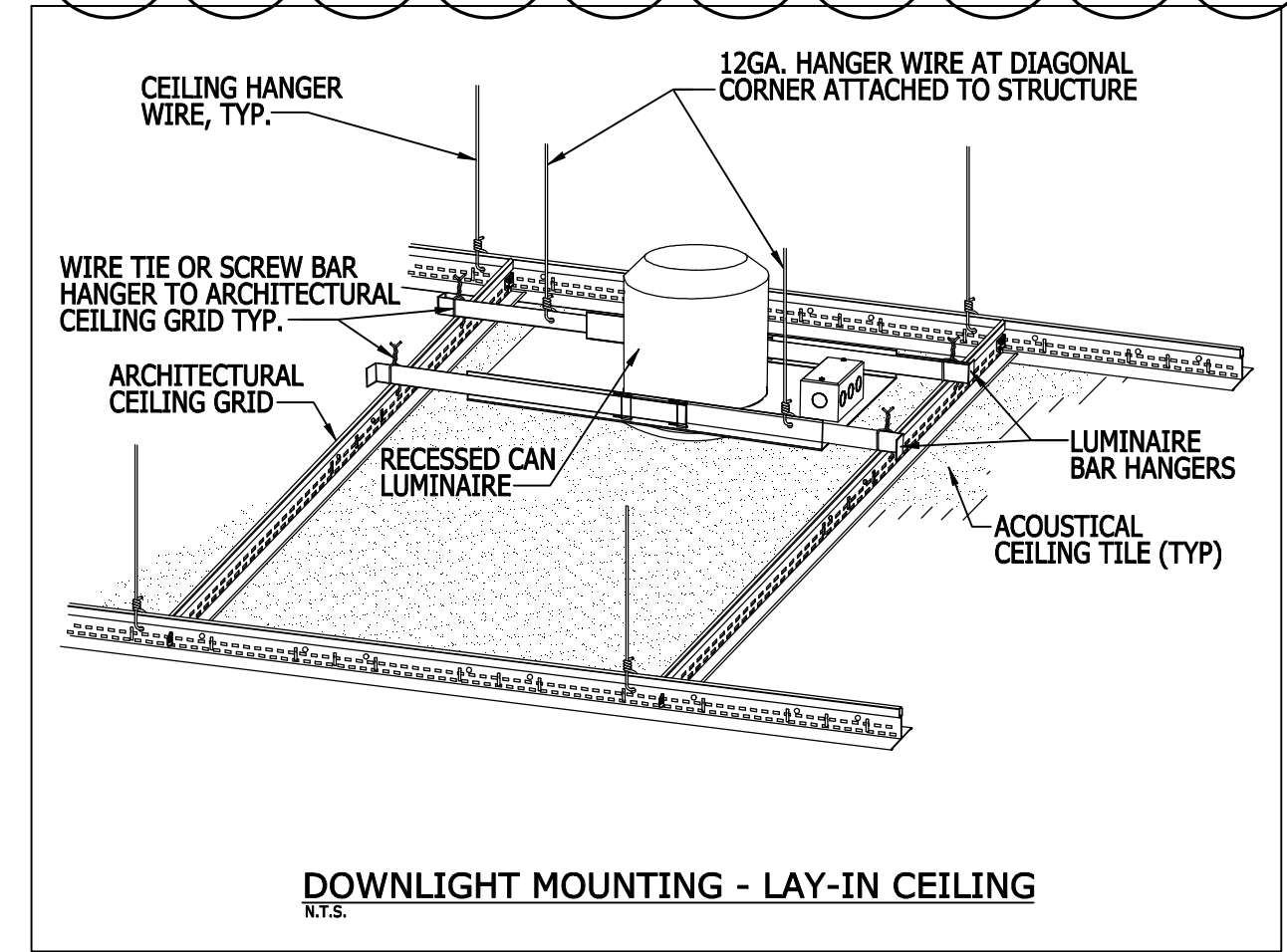
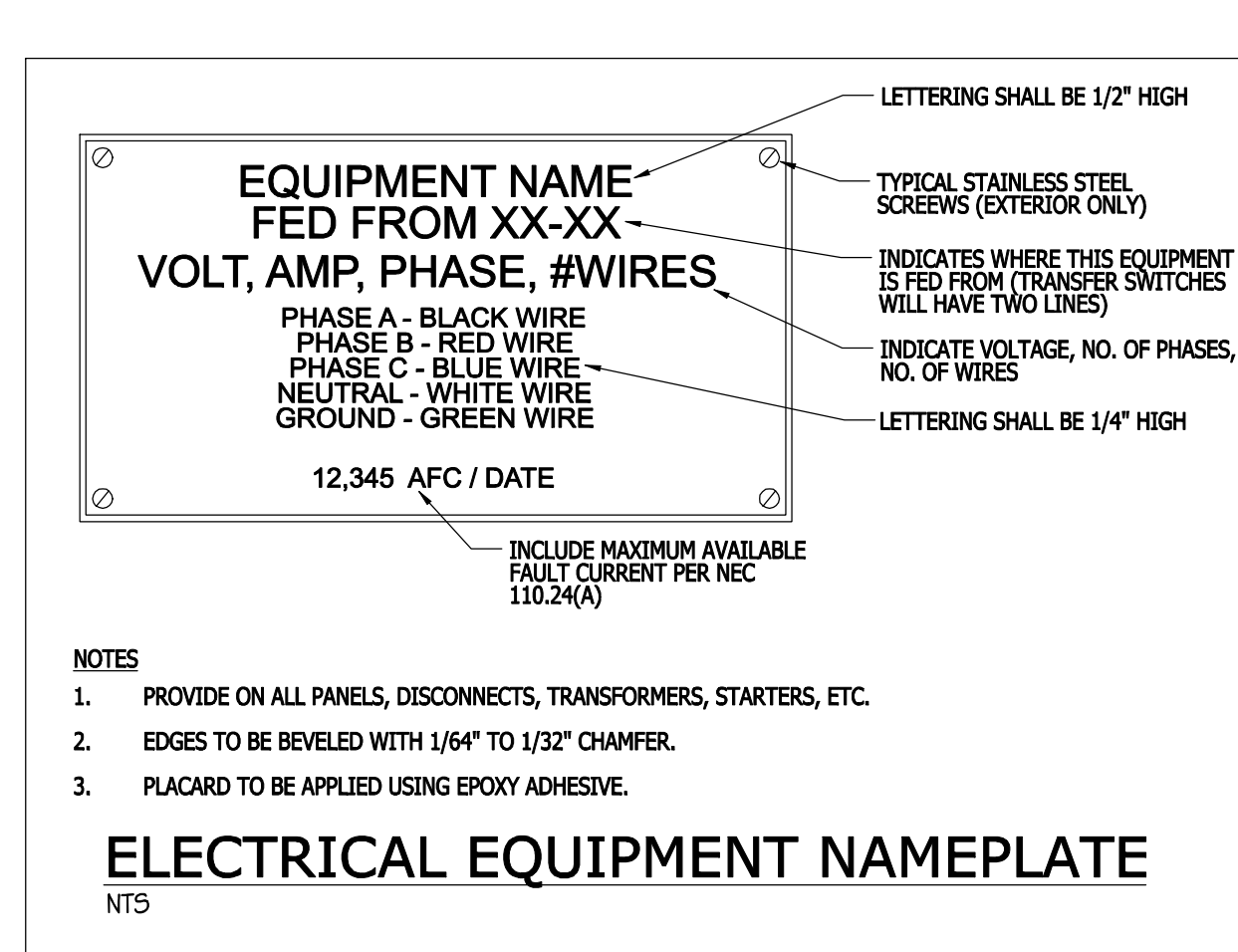
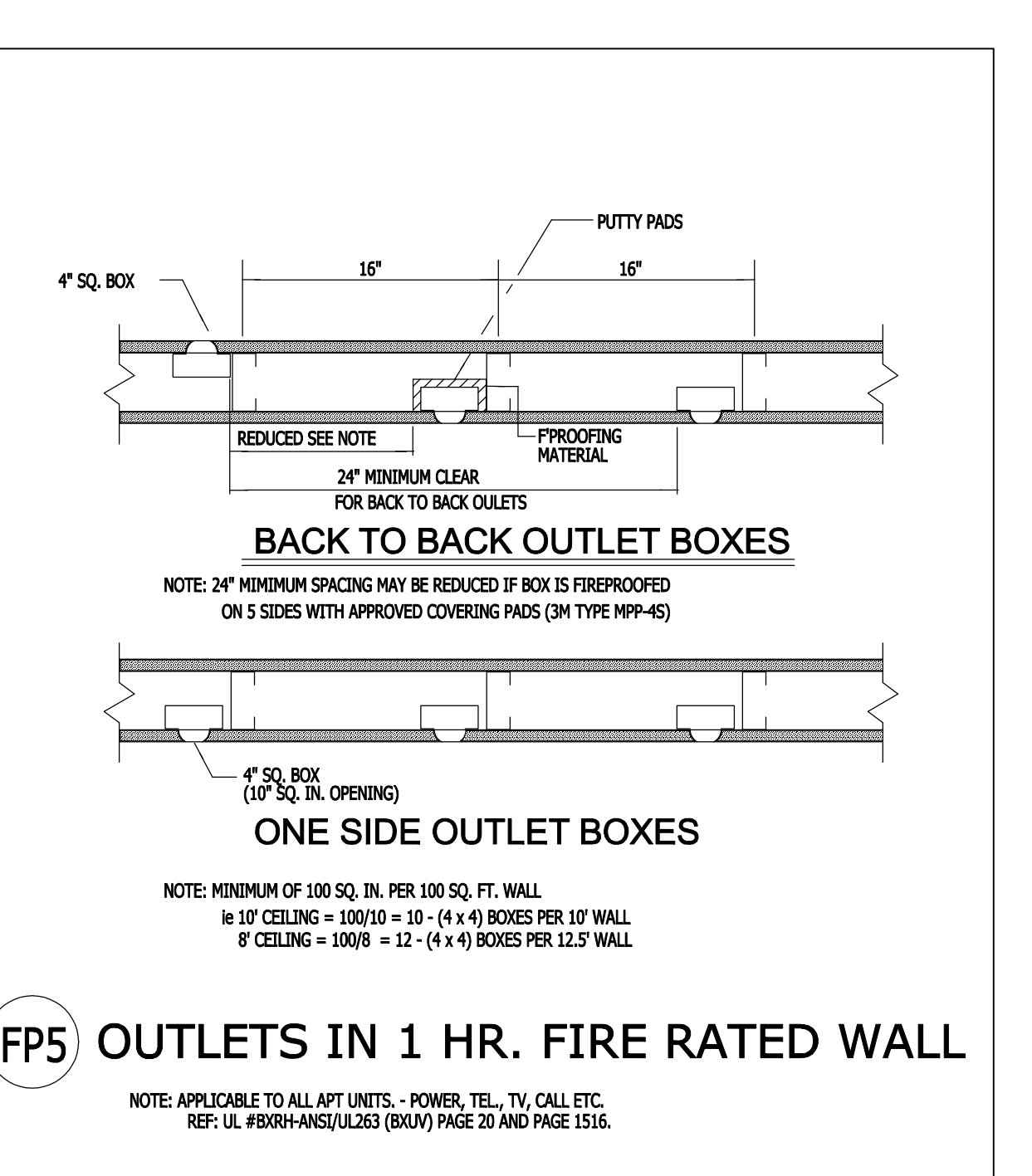
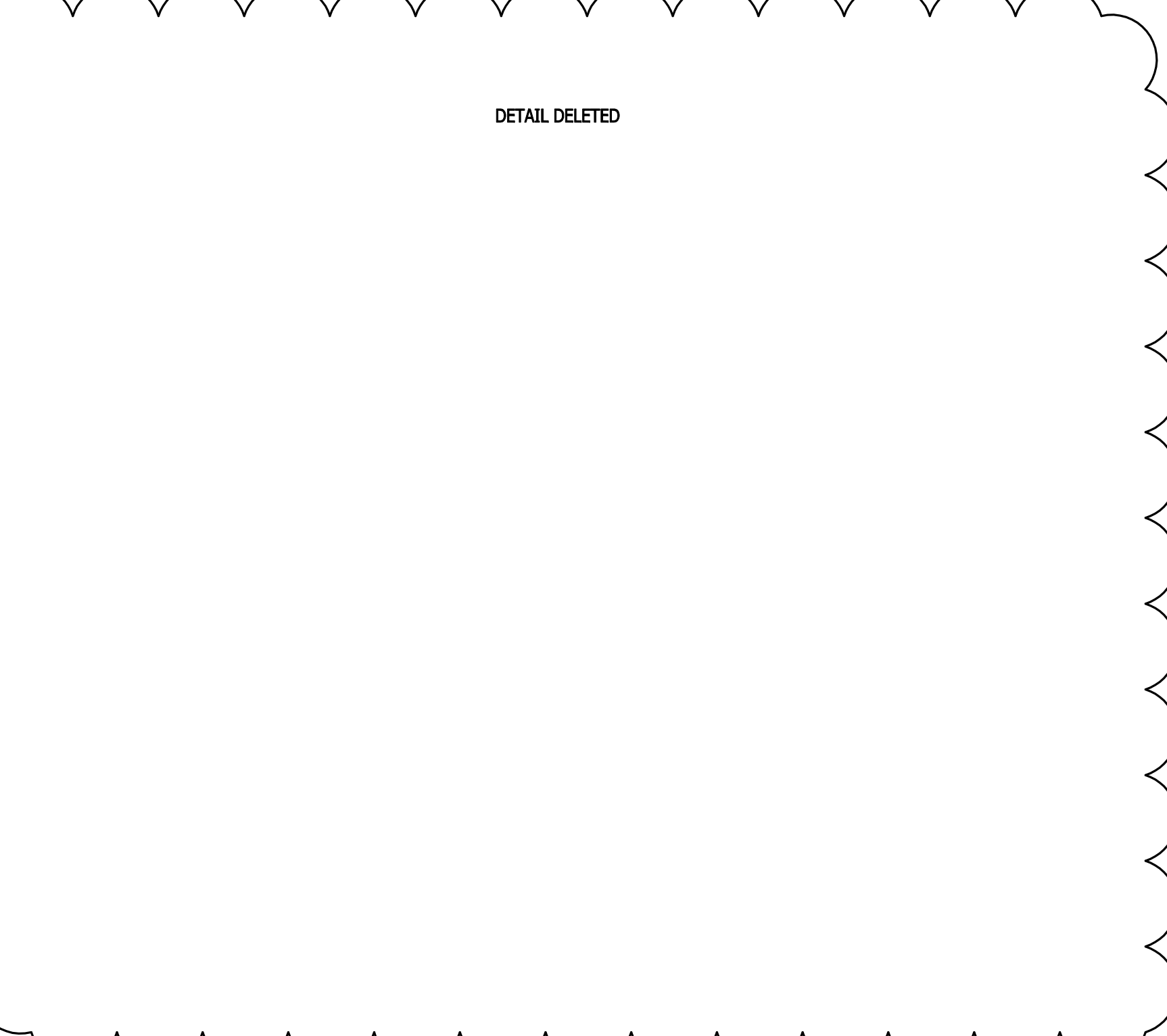
KVA PER PHASE: BUS A: 49.26 BUS B: 47.16 BUS C: 49.34 TOTAL KVA: 145.76

PANEL CALCULATIONS DEMAND KVA: 141.38 TIMES 1000 DIVIDED BY 208 DIVIDED BY 1.732 DEMAND AMPS: 392.44

JOB NAME: Babe Zaharias Golf Course Pro Shop MPS #: 221076 DATE LAST MODIFIED: 12/20/21



Desig.	Type	FINISH	Lens	Volt	Watts	Lamps	Manufacturer	MANUFACTURE CATALOG SERIES	Remarks
A	JUNCTION BOX MOUNTED LED DOWN LIGHT	WHITE	ACRYLIC	120	15	1200 LUMEN LED 4000K	HALO	SLD612 80 40 WH	MOUNT TO JUNCTION BOX FLUSH WITH CEILING WHERE INDICATED ON PLANS.
B	TRACK HEAD TRACK 4'-6"	WHITE	-	120	6.5	MR16 50W LED EQUIVALENT 4000K 500LM	SATCO	1LT TRK HEAD GMBAL RING MR16 WH TR120-TR124	TRACK MOUNTED TO CEILING WHERE INDICATED ON PLANS. PROVIDE A 2.5A CURRENT LIMITER LA-23T-RN-P-REG3A-P OR SIMILAR.
C	LINER FLUSH MOUNT	WHITE	-	120	19.6	1200 LUMEN LED 4000K	LITHONIA	FMLWL24 840 888791197921	MOUNT TO CEILING WHERE INDICATED ON PLANS.



THE INSTALLATION SHALL COMPLY WITH ALL LAWS APPLICABLE TO THE ELECTRICAL INSTALLATIONS WHICH ARE ENFORCED BY THE AUTHORITY HAVING JURISDICTION. THE FOLLOWING CODES SHALL APPLY TO THIS PROJECT:

NFPA - 70 (2017) NATIONAL ELECTRICAL CODE
NFPA - 72 (2016) NATIONAL FIRE ALARM AND SIGNALING CODE
NFPA - 75 (2017) STANDARD FOR THE PROTECTION OF INFORMATION TECHNOLOGY
NFPA - 90A (2018) INSTALLATION OF AIR CONDITIONING AND VENTILATING SYSTEMS
NFPA - 99 (2018) HEALTH CARE FACILITIES CODE
NFPA - 101 (2018) LIFE SAFETY CODE
NFPA - 110 (2016) STANDARD FOR EMERGENCY AND STANDBY POWER SYSTEMS
NFPA - 780 (2017) STANDARD FOR THE INSTALLATION OF LIGHTNING PROTECTION
FLORIDA BUILDING CODE - 2020 7th EDITION
FLORIDA FIRE PREVENTION CODE - 2020 7th EDITION
2018 NFPA 1
2016 NFPA 13, 13R, 13D
2016 NFPA 14
2016 NFPA 24
2017 NFPA 96
2017 NFPA 17A

MEYER ASSOCIATES
INCORPORATED
Architecture + Town Planning
1304 DeSoto Ave. #403
Tampa, Florida 33606
813.849.2259 fax: 813.849.2260
A A - 26800324

CONSULTANT INFORMATION:
MPS ENGINEERING
AN M.P. SPYCHALA COMPANY
SINCE 1984
240 Pine Ave. N
Oldsmar, FL 34677
813.855.2721
www.mpseng.com

Pro Shop Renovation

Babe Zaharias Golf Course
14142 Forest Hills Drive
Tampa, FL 33617

SPORTSAUTHORITY

Engineer: M. W. White, P.E.
1511 W. 15th St., Suite 300
Tampa, FL 33607

SYMBOLS LIST AND DETAILS

DATE: 12/20/21
PROJECT NO: 21-0675

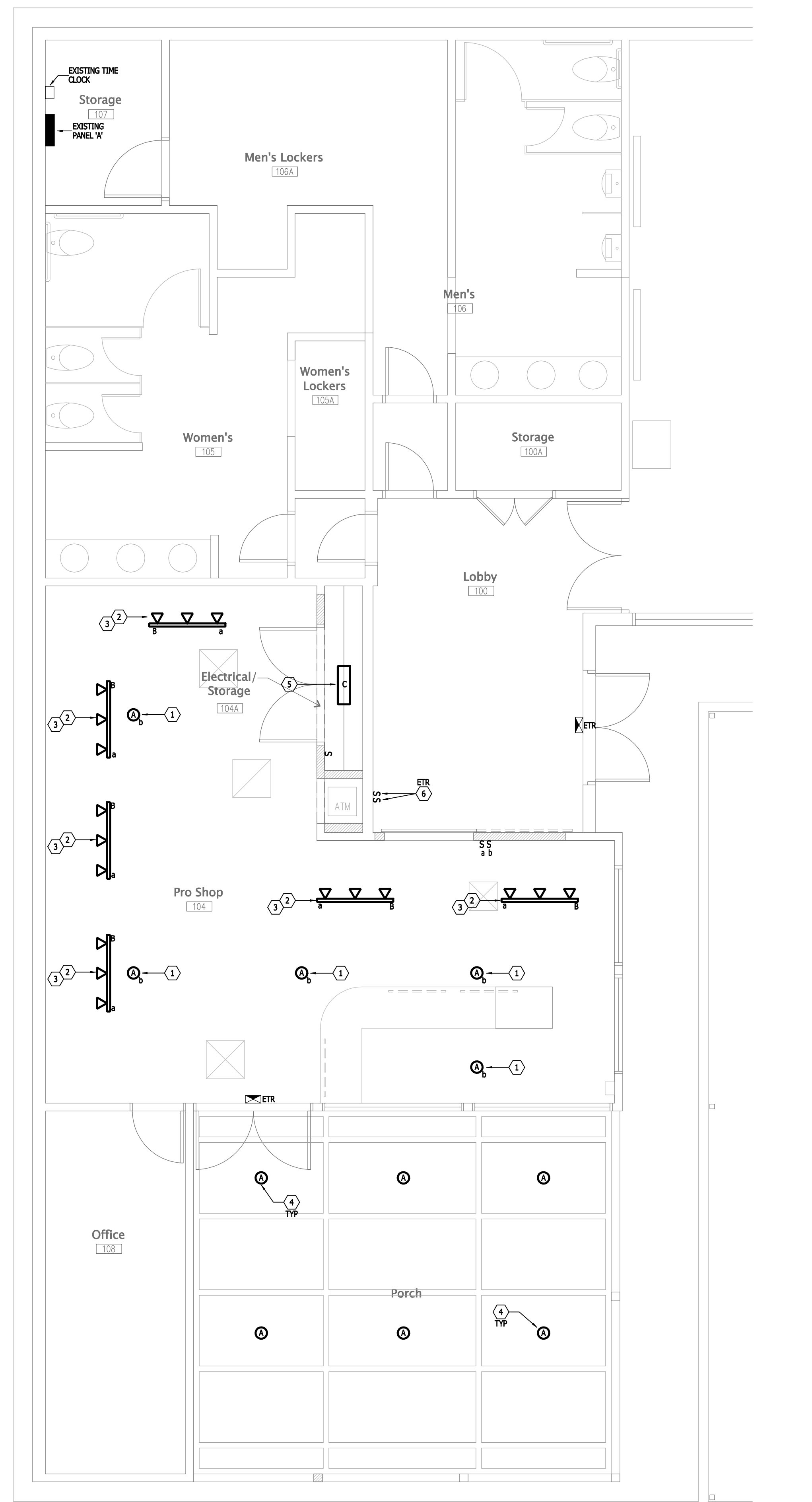
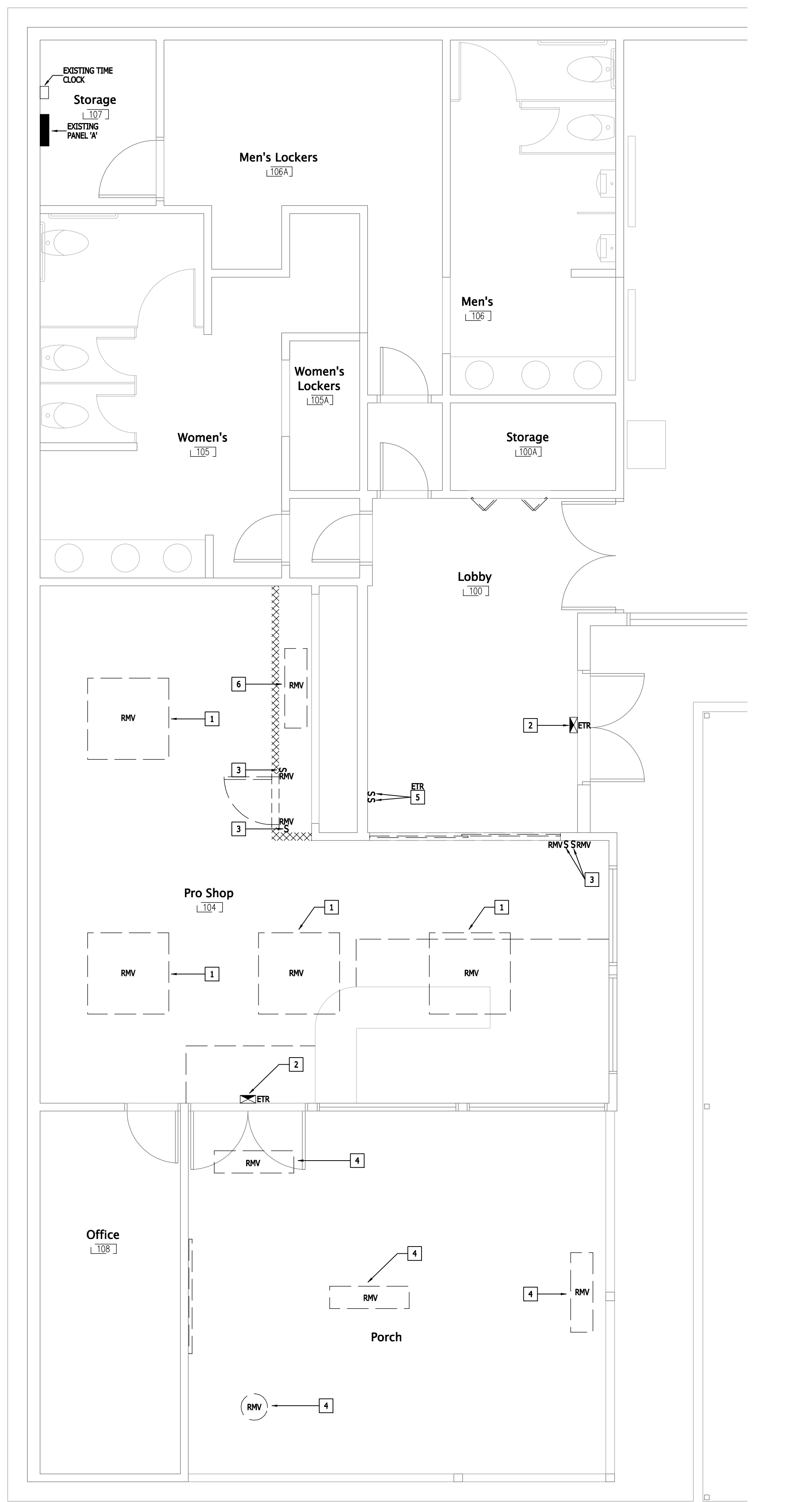
DATE: 12/13/2021

DATE: 1/21/22
REVISION: Addendum #1

DATE: 1/21/22

E0.1

© 2022 Meyer Associates, Inc.



DEMO GENERAL NOTES

- A. EQUIPMENT IDENTIFIED TO BE RELOCATED (RLC) SHALL BE CAREFULLY UNINSTALLED SO AS NOT TO DAMAGE THE EQUIPMENT PRIOR TO REINSTALLATION. IF EQUIPMENT IS DAMAGED DURING DEMOLITION OR CONSTRUCTION OF THIS PROJECT, IT WILL BE THE RESPONSIBILITY OF THE CONTRACTOR TO PROVIDE A SUITABLE AND EQUAL REPLACEMENT OF THE DAMAGED EQUIPMENT AT NO COST TO THE OWNER.
- B. THE INFORMATION SHOWN ON THIS PLAN AND ANY FOLLOWING SHEET IS FOR REFERENCE ONLY. THIS IS NOT AN AS-BUILT DRAWING AND THERE MAY BE EQUIPMENT THAT WAS NOT SEEN DURING THE INITIAL FIELD SURVEY AND THEREFORE MAY BE DIFFERENT THAN WHAT IS INDICATED ON THESE PLANS. THE CONTRACTOR SHALL VERIFY ALL FIELD CONDITIONS ON HIS/HER OWN TO COORDINATE THE NEW CONSTRUCTION WITH EXISTING FIELD CONDITIONS. MAJOR DISCREPANCIES BETWEEN THE DRAWINGS AND FIELD CONDITIONS MUST BE BROUGHT TO THE ATTENTION OF THE ARCHITECT/ENGINEER IN A TIMELY MANNER. FAILURE TO NOTIFY THE ARCHITECT/ENGINEER OF MAJOR DISCREPANCIES BETWEEN FIELD CONDITIONS AND THESE DRAWINGS THAT MAY CAUSE DELAYS IN PREDETERMINED CONSTRUCTION SEQUENCES AND SCOPE DESIGN WILL RESULT IN THE CONTRACTORS RESPONSIBILITY TO PROVIDE, AT NO CHARGE TO THE OWNER, ALL ADDITIONAL EXPENSES AND/OR EQUIPMENT TO COMPLETE THE TASK.
- C. CONDUIT SIZES AND NUMBERS HAVE BEEN ESTIMATED TO THE BEST ABILITY OF THE FIELD SURVEYOR/ENGINEER. THE CONTRACTOR SHALL SURVEY THE FIELD CONDITIONS ON HIS/HER OWN PRIOR TO COMMENCING DEMOLITION AND/OR CONSTRUCTION TO DETERMINE THE BEST POSSIBLE WAY TO RE-ROUTE AND/OR DEMOLISH THE EXISTING CONDUIT AND EQUIPMENT. ALL EXISTING CONDUIT RUNS INDICATED ON THIS SHEET ARE DIAGRAMMATIC ONLY AND SHALL BE TRACED OUT IN THEIR ENTIRETY.
- D. ALL POWER CONDUITS THAT ARE ACTIVE SHALL NOT BE DISTURBED UNTIL SHUT-DOWN OF POWER HAS BEEN COORDINATED WITH FACILITY. ALL OTHER ELECTRICAL CONDUITS (LOW VOLTAGE) SHALL NOT BE DISTURBED UNTIL PROPER FACILITY STAFF HAS BEEN ALERTED OF POSSIBLE SYSTEMS SHUT-DOWN.
- E. ALL ABANDONED AND/OR EMPTY CONDUIT, RACEWAY, JUNCTION BOXES, PULL-BOXES, ETC. THAT TRAVERSE THROUGH THE PROJECT AREA SHALL BE REMOVED IN THEIR ENTIRETY.
- F. DURING THE DEMOLITION AND CONSTRUCTION OF THIS PROJECT, THE CONTRACTOR MUST PROTECT ALL CEILING MOUNTED SMOKE DETECTORS FROM DUST AND DEBRIS. PROVIDE REMOVABLE COVERS FOR EACH DETECTOR WITHIN THE WORK AREA THAT MAY BE AFFECTED BY THE CONSTRUCTION. NOTIFY THE OWNER WHEN THESE DETECTORS ARE COVERED OR PROTECTED. DURING NON-CONSTRUCTION OR DEMOLITION WORKING HOURS, THE DETECTOR COVERS SHALL BE REMOVED. ANY SMOKE DETECTOR DAMAGED DURING THE CONSTRUCTION AND/OR DEMOLITION PROCESS SHALL BE REPLACED WITH A NEW DETECTOR, TYPICAL THROUGHOUT THIS PROJECT.

DEMO KEYED NOTES

- 1. EXISTING LIGHT FIXTURE TO BE REMOVED. DISCONNECT FIXTURE BUT MAINTAIN CONDUIT AND CONDUCTORS FOR CONNECTION OF NEW LIGHT FIXTURE IN SAME LOCATION.
- 2. EXISTING EXIT LIGHT TO REMAIN.
- 3. EXISTING TOGGLE SWITCH TO BE REMOVED. REMOVE ALL CONDUIT AND CONDUCTOR BACK TO POINT OF FEED.
- 4. EXISTING OUTSIDE LIGHT FIXTURE TO BE REMOVED - DISCONNECT FIXTURE BUT MAINTAIN CONDUIT AND CONDUCTORS FOR CONNECTION OF NEW LIGHT FIXTURE.
- 5. EXISTING TOGGLE SWITCH TO REMAIN IN SAME LOCATION (ETR) - DISCONNECT TOGGLE SWITCH BUT MAINTAIN FOR INSTALLATION IN SAME LOCATION AFTER INSTALLATION OF NEW GYPSUM WALLBOARD.
- 6. EXISTING LIGHT FIXTURE TO BE REMOVED - DISCONNECT FIXTURE AND REMOVE WIRING BACK TO POINT OF FEED BUT MAINTAIN CONDUIT FOR CONNECTION OF NEW LIGHT FIXTURE.

DEMO ABBREVIATIONS

- ETR = EXISTING TO REMAIN
- RLC = EXISTING TO BE RELOCATED
- RW = EXISTING TO BE REMOVED
- RW = EXISTING TO BE REWIRED
- RAR = REMOVE AND REPLACE

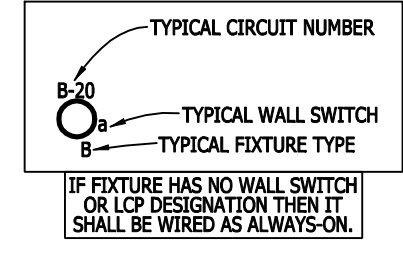
LIGHTING GENERAL NOTES

- A. HALF SHADED FIXTURES HAVE BATTERY EMERGENCY BACKUP FUNCTION. WHEN NORMAL POWER FAILS THESE FIXTURES SHALL BE POWERED BY ONBOARD BATTERY POWER.
- B. CONTRACTOR SHALL INSTALL A GREEN EQUIPMENT GROUNDING WIRE IN ALL CONDUITS AND SHALL BOND THE GROUND WIRE TO ALL DEVICES AND ELECTRICALLY WIRED EQUIPMENT. BONDING SHALL BE INSTALLED IN ACCORDANCE WITH TABLE 250-122 OF THE NEC.
- C. PROVIDE SEPARATE NEUTRAL CONDUCTORS FOR ALL 120V SINGLE POLE CIRCUITS PER NEC ARTICLE 210-4. TYPICAL THROUGHOUT. BREAKER PANEL TIES ARE UNACCEPTABLE.
- D. ANY 20A BRANCH CIRCUITS EXCEEDING A WIRE LENGTH OF 150 FT SHALL USE #10 AWG CONDUCTORS REGARDLESS OF WHAT PANEL SCHEDULES SHOW.
- E. CONTRACTOR SHALL PROVIDE A COMPLETE SET OF SHOP DRAWINGS FOR ALL OF THE LIGHTING CONTROLS SHOWN FOR THIS PROJECT AS PART OF THE SUBMITTAL PACKAGE. THIS SHALL ALSO INCLUDE VERIFICATION OF COVERAGE IN ALL AREAS UTILIZING OCCUPANCY SENSORS.
- F. EXIT SIGNS SHALL BE INSTALLED ABOVE THE DOOR ON HEADER, TO WALL OR CEILING WHERE SHOWN. IT SHALL BE THE CONTRACTORS RESPONSIBILITY TO MAINTAIN THE LINE OF SIGHT FOR THE INSTALLATION OF ALL EXIT SIGNS WHICH SHALL INCLUDE BUT SHALL NOT BE LIMITED TO AVOIDING OBSTRUCTIONS SUCH AS HEADERS, BUILDING ELEMENTS, LIGHT FIXTURES, AND DIFFERENT HEIGHTS OF CEILINGS, ETC.
- G. WHERE LIGHT FIXTURES ARE RECESSED IN RATED CEILINGS, IT SHALL BE THE CONTRACTORS RESPONSIBILITY TO MAINTAIN THE RATING OF THE CEILING ASSEMBLY SURROUNDING THE LIGHT FIXTURE. VERIFY ALL CEILING TYPES WITH ARCHITECTURAL PLANS AND DETAILS PRIOR TO INSTALLATION AND/OR BIDDING.
- H. CONTRACTOR TO COORDINATE ALL DIMMER SWITCHES AND LIGHTING CONTROL PANEL RELAYS WITH THE FIXTURES THEY ARE DIMMING TO VERIFY COMPATIBILITY. PROVIDE ALL LOW VOLTAGE WIRING AND ACCESSORIES REQUIRED FOR A COMPLETE AND FUNCTIONAL LIGHTING CONTROL SYSTEM.

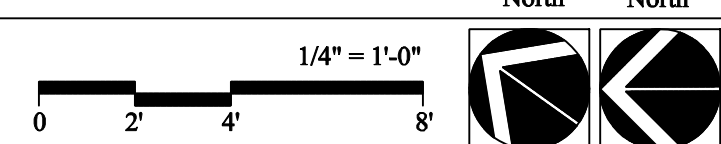
LIGHTING KEYED NOTES

- 1. NEW LIGHT FIXTURE - CONNECT TO EXISTING LIGHTING CIRCUIT MAINTAINED FROM DEMOLITION.
- 2. NEW TRACK LIGHT FIXTURE - COORDINATE EXACT LOCATION, AND ORIENTATION OF LIGHT FIXTURE WITH ARCHITECT PRIOR TO INSTALLATION. CONNECT TO EXISTING LIGHTING CIRCUIT MAINTAINED FROM DEMOLITION. EXTEND WIRES AS NEEDED. TYPICAL.
- 3. TRACK LIGHTING FIXTURE MOUNTED TO CEILING WHERE SHOWN. PROVIDE AND INSTALL A 2.5A CURRENT LIMITER TO EACH TRACK. USE LEVITON LA-25T-RN-P-REG3A-F OR SIMILAR. TYPICAL.
- 4. OUTSIDE LIGHT FIXTURE - CONNECT TO EXISTING LIGHTING CIRCUIT MAINTAINED FROM DEMOLITION. OUTSIDE LIGHT FIXTURE SHOULD BE WIRED THROUGH EXISTING TIME CLOCK. VERIFY ITS CORRECT OPERATION AFTER INSTALLATION.
- 5. INSTALL NEW LINER LIGHT FIXTURE - CONNECT TO EXISTING CIRCUIT MAINTAINED FROM DEMOLITION.
- 6. RE-INSTALL TOGGLE SWITCH MAINTAINED FROM DEMOLITION. PROVIDE SPARK RING BOX EXTENDER TO EXTEND EXISTING TOGGLE SWITCH OUT TO THE FACE OF NEW GYPSUM WALLBOARD.

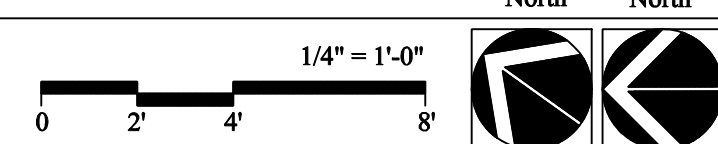
LIGHTING KEY



1
E3.1 Demo Lighting Floor Plan



1
E3.1 Proposed Lighting Floor Plan



MEYER ASSOCIATES
INCORPORATED
Architecture + Town Planning

1304 DeSoto Ave. #403
Tampa, Florida 33606
813.849.2259 fax: 813.849.2260
A.A. - 26800324

CONSULTANT INFORMATION:
MPS ENGINEERING
AN M.P. SPYCHALA COMPANY
SINCE 1984
813.855.2721
www.mpseng.com
240 Pine Ave. N.
Oldsmar, FL 34677

Pro Shop Renovation

Babe Zaharias
Golf Course
14147 Forest Hills Drive
Tampa, FL 33612



Examined by: [Signature]
Professional Engineer
No. [Number] State of Florida
Exp. Date: [Date]

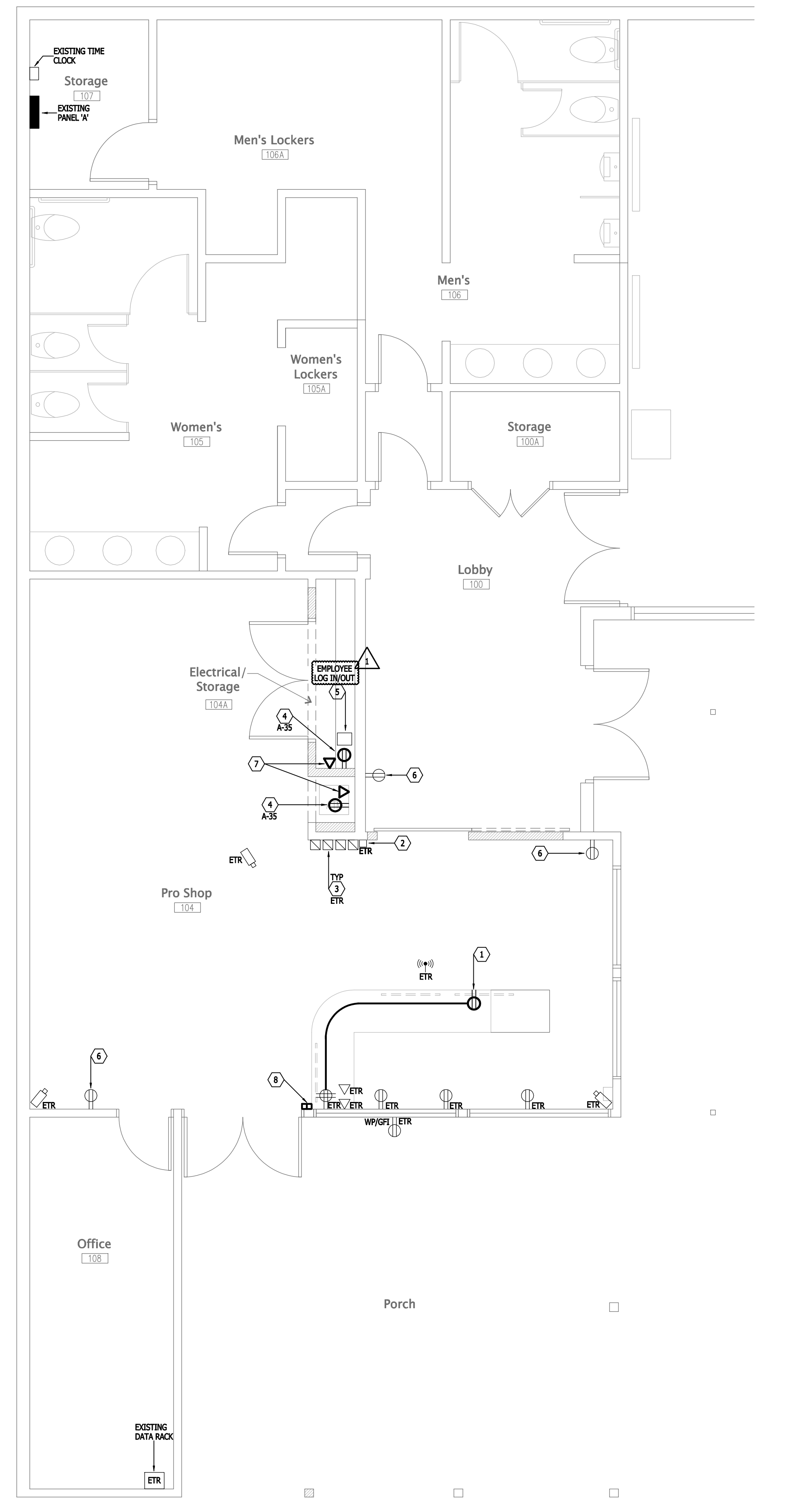
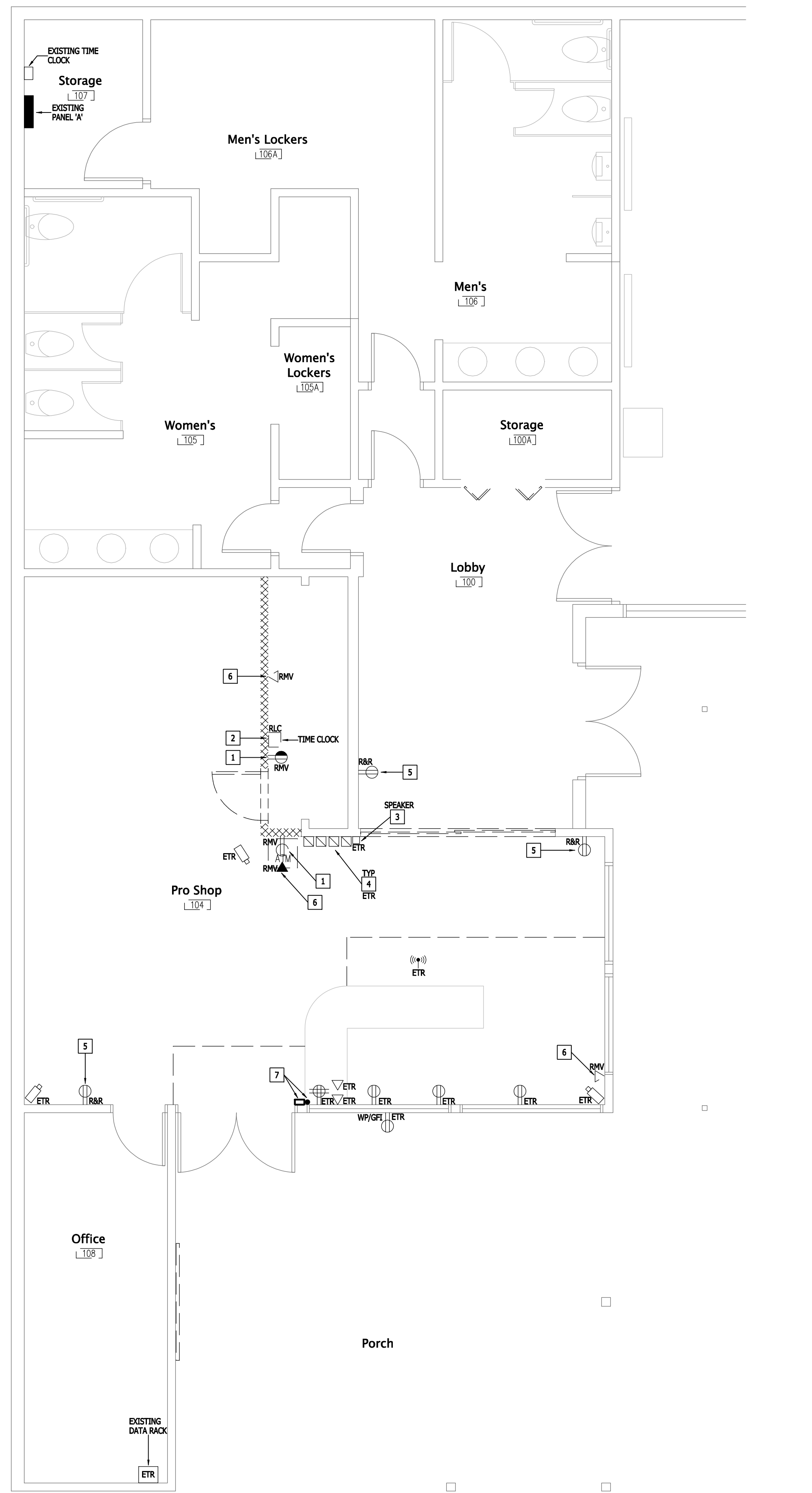
Demolition and Proposed Lighting Plans

DATE OF TAMPAS PROJECT NO. 21-0675

DATE: 90% CD
12/13/2021

NO.	DATE	REVISION

E3.1



DEMO GENERAL NOTES

- EQUIPMENT IDENTIFIED TO BE RELOCATED (RL) SHALL BE CAREFULLY UNINSTALLED SO AS NOT TO DAMAGE THE EQUIPMENT PRIOR TO REINSTALLATION. IF EQUIPMENT IS DAMAGED DURING DEMOLITION OR CONSTRUCTION OF THIS PROJECT, IT WILL BE THE RESPONSIBILITY OF THE CONTRACTOR TO PROVIDE A SUITABLE AND EQUAL REPLACEMENT OF THE DAMAGED EQUIPMENT AT NO COST TO THE OWNER.
- THE INFORMATION SHOWN ON THIS PLAN AND ANY FOLLOWING SHEET IS FOR REFERENCE ONLY. THIS IS NOT AN ASSURANCE THAT THERE MAY BE EQUIPMENT THAT WAS NOT SEEN DURING THE INITIAL FIELD SURVEY AND THEREFORE MAY BE DIFFERENT THAN WHAT IS INDICATED ON THESE PLANS. THE CONTRACTOR SHALL VERIFY ALL FIELD CONDITIONS ON HIS/HER OWN TO COORDINATE THE NEW CONSTRUCTION WITH EXISTING FIELD CONDITIONS. MAJOR DISCREPANCIES BETWEEN THE DRAWINGS AND FIELD CONDITIONS MUST BE BROUGHT TO THE ATTENTION OF THE ARCHITECT/ENGINEER IN A TIMELY MANNER. FAILURE TO NOTIFY THE ARCHITECT/ENGINEER OF MAJOR DISCREPANCIES BETWEEN FIELD CONDITIONS AND THESE DRAWINGS THAT MAY CAUSE DELAYS IN PREDETERMINED CONSTRUCTION SCHEDULES AND SCOPE DESIGN WILL RESULT IN THE CONTRACTOR'S RESPONSIBILITY TO PROVIDE AT NO CHARGE TO THE OWNER, ALL ADDITIONAL EXPENSES AND/OR EQUIPMENT TO COMPLETE THE TASK.
- CONDUIT SIZES AND NUMBERS HAVE BEEN ESTIMATED TO THE BEST ABILITY OF THE FIELD SURVEYOR/ENGINEER. THE CONTRACTOR SHALL SURVEY THE FIELD CONDITIONS ON HIS/HER OWN PRIOR TO COMMENCEMENT OF DEMOLITION AND/OR CONSTRUCTION TO DETERMINE THE BEST POSSIBLE WAY TO RE-ROUTE AND/OR DEMOLISH THE EXISTING CONDUIT AND EQUIPMENT. ALL EXISTING CONDUIT RUNS INDICATED ON THIS SHEET ARE DIAGRAMMATIC ONLY AND SHALL BE TRACED OUT IN THEIR ENTIRETY.
- ALL POWER CONDUITS THAT ARE ACTIVE SHALL NOT BE DISTURBED UNTIL SHUT-DOWN OF POWER HAS BEEN COORDINATED WITH FACILITY. ALL OTHER ELECTRICAL CONDUITS (LOW VOLTAGE) SHALL NOT BE DISTURBED UNTIL PROPER FACILITY STAFF HAS BEEN ALERTED OF POSSIBLE SYSTEMS SHUT-DOWN.
- ALL ABANDONED AND/OR EMPTY CONDUIT, RACEWAY, JUNCTION BOXES, PULL-BOXES, ETC. THAT TRAVERSE THROUGH THE PROJECT AREA SHALL BE REMOVED IN THEIR ENTIRETY.
- DURING THE DEMOLITION AND CONSTRUCTION OF THIS PROJECT, THE CONTRACTOR MUST PROTECT ALL CEILING MOUNTED SMOKE DETECTORS FROM DUST AND DEBRIS. PROVIDE REMOVABLE COVERS FOR EACH DETECTOR WITHIN THE WORK AREA THAT MAY BE AFFECTED BY THE CONSTRUCTION. NOTIFY THE OWNER WHEN THESE DETECTORS ARE COVERED OR PROTECTED. DURING NON-CONSTRUCTION OR DEMOLITION WORKING HOURS, THE DETECTOR COVERS SHALL BE REMOVED. ANY SMOKE DETECTOR DAMAGED DURING THE CONSTRUCTION AND/OR DEMOLITION PROCESS SHALL BE REPLACED WITH A NEW DETECTOR, TYPICAL THROUGHOUT THIS PROJECT.

DEMO KEYED NOTES

- EXISTING DEVICE TO BE REMOVED (RMV). REMOVE ALL WIRING, AND CONDUIT BACK TO POINT OF FEED. TYPICAL.
- TIME CLOCK TO BE REMOVED AND RELOCATED - REMOVE ALL WIRING BACK TO THE NEAREST JUNCTION BOX. PROVIDE A TEMPORARY CONNECTION UNTIL ITS RELOCATED. SEE NEW LOCATION IN PROCESSING POWER AND COMMUNICATION FLOOR PLAN IN THIS SHEET.
- EXISTING SPEAKER TO REMAIN IN SAME LOCATION. (ETR) - REMOVE SPEAKER AND STORE FOR LATER RE-INSTALLATION IN SAME LOCATION. MAINTAIN CONDUIT AND CONDUCTORS. PROTECT THE EXISTING WIRING DURING INSTALLATION OF NEW GYPSUM WALLBOARD.
- EXISTING SMOKE DETECTOR TEST RESET TO REMAIN IN SAME LOCATION - DISCONNECT TEST RESET BUT MAINTAIN FOR INSTALLATION IN SAME LOCATION AFTER INSTALLATION OF NEW GYPSUM WALLBOARD.
- EXISTING RECEPTACLE TO BE REMOVED AND REPLACED - DEMOLISH EXISTING RECEPTACLE BUT MAINTAIN CONDUIT AND CONDUIT FOR INSTALLATION OF NEW RECEPTACLE IN SAME LOCATION. PROTECT THE EXISTING WIRING DURING INSTALLATION OF NEW GYPSUM WALLBOARD.
- DEMOLISH EXISTING DATA/PHONE PORT - REMOVE DEVICE AND ALL WIRING BACK TO DATA RACK.
- EXISTING RACEWAY AND METALIC CONDUIT TO BE REMOVED AND REPLACE. DISCONNECT AND REMOVE RACEWAY AND POWER WIRING FROM METALIC CONDUIT BUT MAINTAIN BOTH SETS OF WIRES FOR INSTALLATION OF NEW TWO CHANNEL WIREMOLD.

DEMO ABBREVIATIONS

- ETR = EXISTING TO REMAIN
- RMV = EXISTING TO BE REMOVED
- RWD = EXISTING TO BE REWired
- RLC = EXISTING TO BE RELOCATED

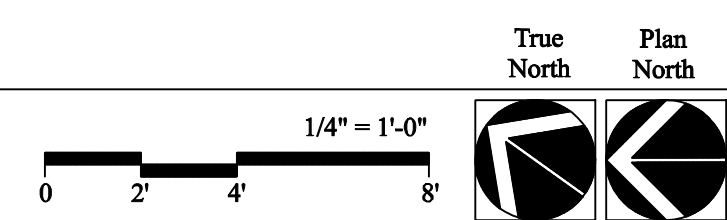
POWER GENERAL NOTES

- CONTRACTOR SHALL INSTALL A GREEN EQUIPMENT GROUNDING WIRE IN ALL CONDUITS AND SHALL BOND THE GROUND WIRE TO ALL DEVICES AND ELECTRICALLY WIRED EQUIPMENT. BONDING SHALL BE INSTALLED IN ACCORDANCE WITH TABLE 250-122 OF THE NEC.
- PROVIDE SEPARATE NEUTRAL CONDUCTORS FOR ALL 120V SINGLE POLE CIRCUITS PER NEC ARTICLE 210.4. TYPICAL THROUGHOUT. BREAKER HANDLE TIES ARE UNACCEPTABLE.
- ALL DEVICE BOX LOCATIONS SHALL BE FIELD VERIFIED BY THE ARCHITECT/ENGINEER AND/OR ENGINEER PRIOR TO INSTALLATION OF DRYWALL OR MILLWORK. THE CONTRACTOR SHALL NOTIFY THE ARCHITECT WHEN ALL DEVICE BOX ROUGH-IN LOCATIONS HAVE BEEN COMPLETED FOR A VISUAL INSPECTION OF ALL LOCATIONS.
- ALL OUTLET OR DEVICE BOXES INSTALLED WITHIN CASEWORK SHALL HAVE A MAXIMUM 1/8" GAP AROUND OUTSIDE EDGE OF CASEWORK. SEAL ALL GAPS WITH FIRE RATED PUTTY/CAULKING. PROVIDE UL LISTED EXTENSION RINGS FOR OUTLET BOXES THAT ARE NOT FLUSH WITH SURFACE. TYPICAL THROUGHOUT.
- CONTRACTOR SHALL REFER TO ARCHITECTURAL REFLECTED CEILING PLANS FOR EXACT LOCATION OF ALL CEILING MOUNTED EQUIPMENT.
- EQUIPMENT LOCATIONS ARE DIAGRAMMATIC ONLY AND SHOULD NOT BE SCALED FOR ACCURACY. REFER TO ARCHITECTURAL AND MECHANICAL DRAWINGS FOR EXACT LOCATIONS PRIOR TO ROUGH-IN.
- ALL RECEPTACLES WITHIN 6' OF A WATER SOURCE SHALL HAVE GFCI PROTECTION WHETHER INDICATED ON PLANS OR NOT.
- ALL DIMENSIONING FOR EQUIPMENT, JUNCTION BOXES AND DEVICES SHALL BE FIELD VERIFIED WITH EQUIPMENT SUPPLIER PRIOR TO ROUGH-IN. ELECTRICAL CONTRACTOR TO REFER TO MANUFACTURER'S BROCHURES, SPECIFICATIONS, SHOP DRAWINGS, AND ALL OTHER SUBMITTALS FOR WIRING REQUIREMENTS (INCLUDING THE NECESSITY FOR A NEUTRAL CONDUCTOR) AND ADDITIONAL DATA PRIOR TO STARTING ROUGH-INS. CONTRACTOR TO PROVIDE ALL RECEPTACLE CORDS, CORD CAPS, PLUGS, CONDUITS, SWITCHES, DISCONNECTING MEANS, ETC. TO MEET THE EQUIPMENT REQUIREMENTS AS IT ARRIVES IN THE FIELD. THE EQUIPMENT SUPPLIED TO THE SITE SHALL GOVERN THESE REQUIREMENTS.
- ANY 20A BRANCH CIRCUITS EXCEEDING A WIRE LENGTH OF 150 FT SHALL USE #10 AWG CONDUCTORS REGARDLESS OF WHAT PANEL SCHEDULES SHOW.

POWER KEYED NOTES

- INSTALL NEW RECEPTACLE UNDER FRONT DESK - EXTEND EXISTING RECEPTACLE CIRCUITRY TO NEW RECEPTACLE. COORDINATE EXACT LOCATION WITH ARCHITECT PRIOR TO ROUGH-IN.
- RE-INSTALL SPEAKER MAINTAINED FROM DEMOLITION. EXTEND WIRES AS NEEDED TO BRING EXISTING SPEAKER OUT TO THE FACE OF NEW GYPSUM WALLBOARD.
- RE-INSTALL SMOKE DETECTOR TEST RESET IN SAME LOCATION - INSTALL EXISTING TEST RESET OUT TO THE FACE OF NEW GYPSUM WALLBOARD.
- NEW RECEPTACLE - PROVIDE A NEW HOME RUN. CIRCUIT AS LABELED.
- EMPLOYEE LOG IN/OUT - INSTALL EXISTING EMPLOYEE LOG IN/OUT IN NEW LOCATION. EXTEND WIRING MAINTAINED FROM DEMOLITION.
- INSTALL NEW RECEPTACLE - PROVIDE BOX EXTENDER TO INSTALL NEW RECEPTACLE OUT TO THE FACE OF NEW GYPSUM WALLBOARD. EXTEND WIRES AS NEEDED.
- NEW DATA DROP - PROVIDE CAT5E WIRING BACK TO EXISTING DATA RACK. TERMINATE CABLE AT BOTH ENDS. TEST AND LABEL CABLE RUN AFTER INSTALLATION.
- NEW WIREMOLD - PROVIDE NEW LOW-PROFILE TWO CHANNEL WIREMOLD LEGRAND 2500BACD. RE-ROUTE DATA AND POWER WIRING MAINTAINED FROM DEMOLITION THROUGH NEW WIREMOLD. EXTEND WIRES AS NEEDED.

1 E4.1 Demo Floor Plan



2 E4.1 Proposed Power and Communications Floor Plan

