



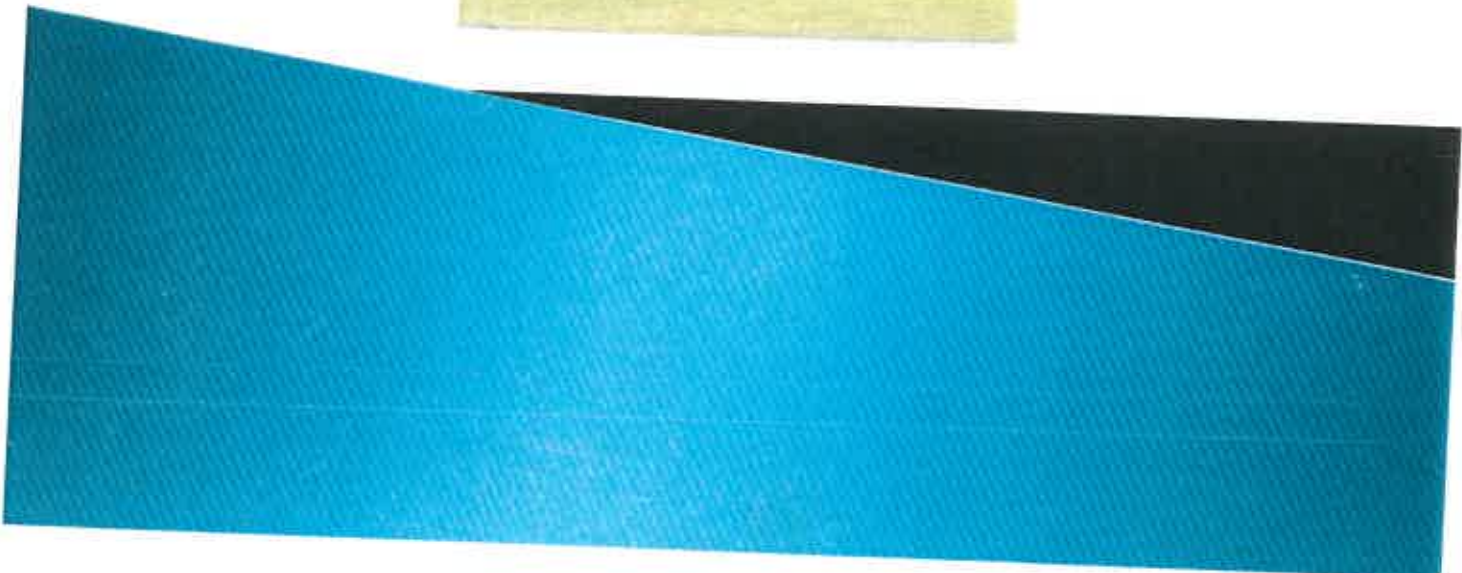
GOLF COURSE BUDGET  
FY 2010-2011



Rogers Park Golf Course



Rocky Point



**TAMPA SPORTS AUTHORITY  
GOLF COURSE BUDGET  
FY 2010-2011**

**TABLE OF CONTENTS**

**SECTION I – GOLF COURSE ADMINISTRATION**

---

EXECUTIVE DIRECTORS’S REPORT – RJS	1-4
MISSION STATEMENT	5
TSA BOARD OF DIRECTORS	6
GOLF COURSE ORGANIZATIONAL CHART	7

**SECTION II – BUDGET REQUEST**

---

COMPARATIVE STATEMENT OF REVENUES & EXPENSES	8
FY 2011 CAPITAL PROJECTS	9
GRAPHS	
• TOTAL REVENUE COMPARISON	10
• GENERAL ADMINISTRATION EXPENSE COMPARISON	11
• CLUBHOUSE EXPENSE COMPARISON	12
• COURSE MAINTENANCE EXPENSE COMPARISON	13
• PAID PLAYERS COMPARISON	14

**SECTION III – MEMBERSHIPS**

---

TRADITION MEMBERSHIP PLAN INFORMATION	15
TRADITION GOLF MEMBERSHIP PLAN APPLICATION	16
TSA DISCOUNT GOLF CARD 2010	17
RATES	18-25
RATES COMPARISON	26-29

**SECTION I - GOLF COURSE ADMINISTRATION**



Eric D. Hart  
Executive Director

## **Executive Director's Municipal Golf Course Budget Report**

### **Introduction**

I am pleased to present the recommended budget for the fiscal year 2011. This budget was developed with the involvement of staff members and included a full review by the Authority finance committee. With the ongoing downturn in the economy and the financial challenges at the City of Tampa, this budget was developed to reduce the TSA's overall financial reliance on the City. The contribution request for FY 2011 is an increase in our request from previous years, but is less than the actual financial amount that has been needed to operate the courses over the past ten (10) years. The Authority has experienced challenges in meeting the budget request to the City of Tampa and has been using TSA operating reserves to meet the financial obligations of the golf courses. The Authority has reduced over 81% of its work force over the past three (3) fiscal years and made significant modifications in operating and event staffing policies to create these reductions in costs. During FY 2010, maintenance operations at the courses were outsourced to OneSource Landscaping and Golf Services, LLC. This reduced the Authority workforce by twenty-four (24) employees and will significantly reduce Authority maintenance costs over the next three (3) years. The Authority management has created a business plan for the golf courses and a long range strategic plan for the overall Authority to assist us in reducing our operating contributions and finding creative ways to operate more like private enterprise.

### **About the Authority**

The Tampa Sports Authority is an independent special district, created by the Florida Legislature in 1965, to construct and manage sports and recreational facilities in Hillsborough County. The Authority's vision is to provide economic development and enhance the quality of life through sports and recreation. The Authority has no taxing power, but rather acts as an enterprise fund utilizing user-fees to subsidize its operating costs. As a result, all of its major capital construction projects, from the original Tampa Stadium, Golf Courses, St. Pete Times Forum, George Steinbrenner Field and Raymond James Stadium have been accomplished by working closely with the approvals and financial support of Hillsborough County and the City of Tampa.

Babe Zaharias, Rogers Park and Rocky Point are municipal golf courses owned by the City of Tampa. The Authority has managed these courses since mid-1970 with the expressed mission of maintaining reasonably low prices for the benefit of the golfing public and welcomed over 109,113 golfers in FY 2009. Provided within this report is a survey of rates from several local public courses that shows the TSA offers some of the lowest green fee rates in the region.

## Contribution Request

This year's anticipated operating and maintenance (O&M) expenses outlined in this document require the Authority to request a contribution of \$747,462 from the City for next year's contractual obligations. This contribution includes projected capital costs of \$343,241 and the estimated remaining outstanding "Due To" balance payment from previous years operations of \$17,106. The Authority has an existing Inter-local Agreement with the City of Tampa which states the City shall be responsible for any operating shortfalls realized by the courses. The Authority does not have an O&M Reserve Fund because of ongoing operating shortfalls over the past ten (10) years.

Revenues for FY 11 were developed from the following assumptions:

1. Fee increases (Non City of Tampa residents)
2. Special events are projected to increase in frequency
3. October and November revenues increased by 3%
4. Revenues increased by \$242,456. (This is due to the assumption that weather conditions will return to normal in FY 11. Cool wet weather from December – March affected revenues)
5. Increased driving range rates
6. Decreased membership rates (membership program and TSA Card)
7. Golf Rates (increased non-residents, maintained residents)
8. December thru March revenue projections are equal to FY08-09. This is based on the 17% decline in paid rounds due to unseasonable weather
9. April thru Septembers revenue are equal to the projections for FY09-10

Expenses for FY 11 were developed from the following assumptions:

1. No annual cost of living increases
2. No furlough days (5 furlough days included in FY 10 budget)
3. Modification of overtime policies
4. No increase in Health care costs (Employee contribution increased mid-year in FY 10)
5. Increased Authority financial contribution to the Florida Retirement System (FRS) (mandated by the State of Florida)
6. Expenses are projected to remain flat in relationship to expenses in FY 10 for all areas except course maintenance.
7. Outsourcing of maintenance activities is projected to decrease expenses by approximately \$102,000 compared to FY 10 budget.
8. Additional savings are anticipated due to services provided by OneSource. Many budget items are presently being assumed by the contractor that has created additional savings in other operational areas.
9. Clubhouse weekly payroll budgets have been reduced. Part-time positions were combined or eliminated during slow periods to create additional savings
10. Elimination of depreciation expense

The following schedule shows actual and projected contributions from the City of Tampa:

Description	Budget FY 09-10	Projected FY 09-10	Budget FY 10-11
Operating Revenues	\$3,719,523	\$2,958,729	\$3,201,185
Operating Expenses	\$3,758,421	\$3,529,721	\$3,588,300
<b>Net from Operations</b>	<b>(\$38,898)</b>	<b>(\$570,992)</b>	<b>(\$387,115)</b>
Depreciation	\$551,520	\$0	\$0
Capital Costs	\$340,884	\$285,708	\$343,241
<b>Net including Capital and Depreciation</b>	<b>(\$931,302)</b>	<b>(\$856,700)</b>	<b>(\$730,356)</b>
Annual Contribution request from City of Tampa	\$379,782	\$856,700	\$730,356
FY 08-09 – Projected Losses above budget request (Due To)	\$322,786	\$0	\$0
FY 04-10- Actual losses above budget request (Due To)	\$1,005,738	\$1,708,306	\$17,106
<b>Total City of Tampa Contribution</b>	<b>\$702,568</b>	<b>\$2,547,900</b>	<b>\$747,462</b>

### **Budget Notes**

1. **Accrual Accounting:** The Authority's golf course budget is presented on an accrual basis for the first time. Monthly financial statements along with budget documents are presented on a full accrual basis of accounting.
2. **Total City of Tampa contribution:** Contribution amount is a sum of the following numbers: present year operational losses, capital investments, actual losses from previous years.
3. **Resolution of "Due To" amounts:** The Authority has experienced losses greater than the Authority's budget request to the City of Tampa for Golf Operations over the past 10 years. The City of Tampa fully funds operations and maintenance (O&M) at the municipal golf courses. A "Due To" from the City of Tampa to the Authority developed starting in 2004. A "Due to" for this scenario is defined as money that is owed from one governmental agency to another governmental agency to cover contractual obligations. While the City of Tampa was making incremental payments, the Authority was not invoicing the City for the



4. total amount of these additional losses and used cash from Authority reserves to meet the golf course obligations. It was believed that the economy would improve and revenues would be greater than the projected budget, allowing the Authority to pay down the "Due To's". These increased revenues have not been attained and the governmental agencies have agreed that resolution of these balances need to occur. Reserves used for golf course O&M were originally obligated for operations at Raymond James Stadium. The Authority is funded by the City of Tampa (1/3) and Hillsborough County (2/3) for these operations. The Authority anticipates refunding \$1,183,799 to Hillsborough County and \$591,900 to the City of Tampa at the end of fiscal year 2010. This refund is based on the Authority requesting funding to maintain sufficient cash-flow to support stadium operations. Without the "Due To" applied the Authority reserves are able to be reduced. The City of Tampa will apply the \$591,900 to any remaining "Due To" amounts at the start of FY 2011. The City of Tampa has agreed to retire any remaining "Due To" amounts that exist after applying the refund payment. The remaining "Due To" amount is estimated to be \$16,821 after applying \$2,547,900 in payments toward FY 10. The Authority will continue to work closely with the City of Tampa related to golf course finances and any deviation from the budget or cash flow issues will be addressed monthly to ensure the Authority is not using any Authority reserves for operations.
5. Depreciation: Depreciation has been eliminated within the Authority budget. Authority has worked with the City administration and Authority auditors to determine that depreciation expense is not applicable and the assets have been transferred back to the City of Tampa.
6. Revenues: While revenues appear to increase 8% in the budget sheet, this increase in revenue is based on flat growth in revenues. In FY 2010, severe weather restricted many days of play during our peak months. The Authority experienced revenue losses due to weather conditions vs. a lack of demand. The FY 11 budget reflects gaining back those revenues but does not project any increase in play in the coming year due to the ongoing economic struggles in the region.
7. Salaries. Wages include full-time, part-time and over-time estimates and corresponding benefits such as social security, retirement and health insurance. No cost of living or merit increases are budgeted for fiscal year 2011. Reduction in labor costs are associated with the elimination of three (3) full time positions and the outsourcing of twenty-four maintenance positions to OneSource Landscaping and Golf Services, LLC.
8. Capital costs: Reimbursement for proposed capital costs is provided by the City of Tampa net of any operating surplus.
9. Income tax: The Authority is a governmental agency and therefore exempt from Federal and State income taxes under provisions of the Internal Revenue Code and the Florida Income Tax Code, respectively. There are no provisions for income taxes in the budget.

## **Mission Statement**

To plan, develop, promote and maintain a comprehensive complex of sports and recreation facilities of the use and enjoyment of the citizens of Tampa and Hillsborough County.

## **Our Role**

To facilitate the construction and operations of needed user-fee supported sports and recreational facilities. To encourage and not compete with the private sector. "User-fee supported" distinguishes us from a Parks and Recreation Department.

## **Vision Statement**

To provide economic development and enhance the quality of life through sports and recreation.



**TAMPA SPORTS AUTHORITY  
BOARD OF DIRECTORS**

**Andrew Scaglione  
Chairman**



Appointed 6/07  
by the BOCC  
Term Expires 6-30-11

**Frank DeBose  
Vice-Chairman**



Appointed 7/05  
by the Mayor  
Term Expires: 6-30-13

**Tony Muniz  
Secretary-Treasurer**



Appointed 6/07  
by the BOCC  
Term Expires 6-30-11

**Mary Alvarez**



Appointed 6/08  
by the Mayor  
Term Expires: 6-30-11

**Kalyn Brandewie**



Appointed 7/03  
by the Mayor  
Term Expires: 6-30-11

**Don DeFosset**



Appointed 8/11  
by the Governor  
Term Expires: 7-1-13

**Randy Larson**



Appointed 6/09  
by the BOCC  
Term Expires: 6-30-13

**Dana Ludwig**



Appointed 8/09  
by the Mayor  
Term Expires 6-30-13

**Vincent Marchetti**



Appointed 8/01  
by the BOCC  
Term Expires: 6-30-13

**Jim Norman**



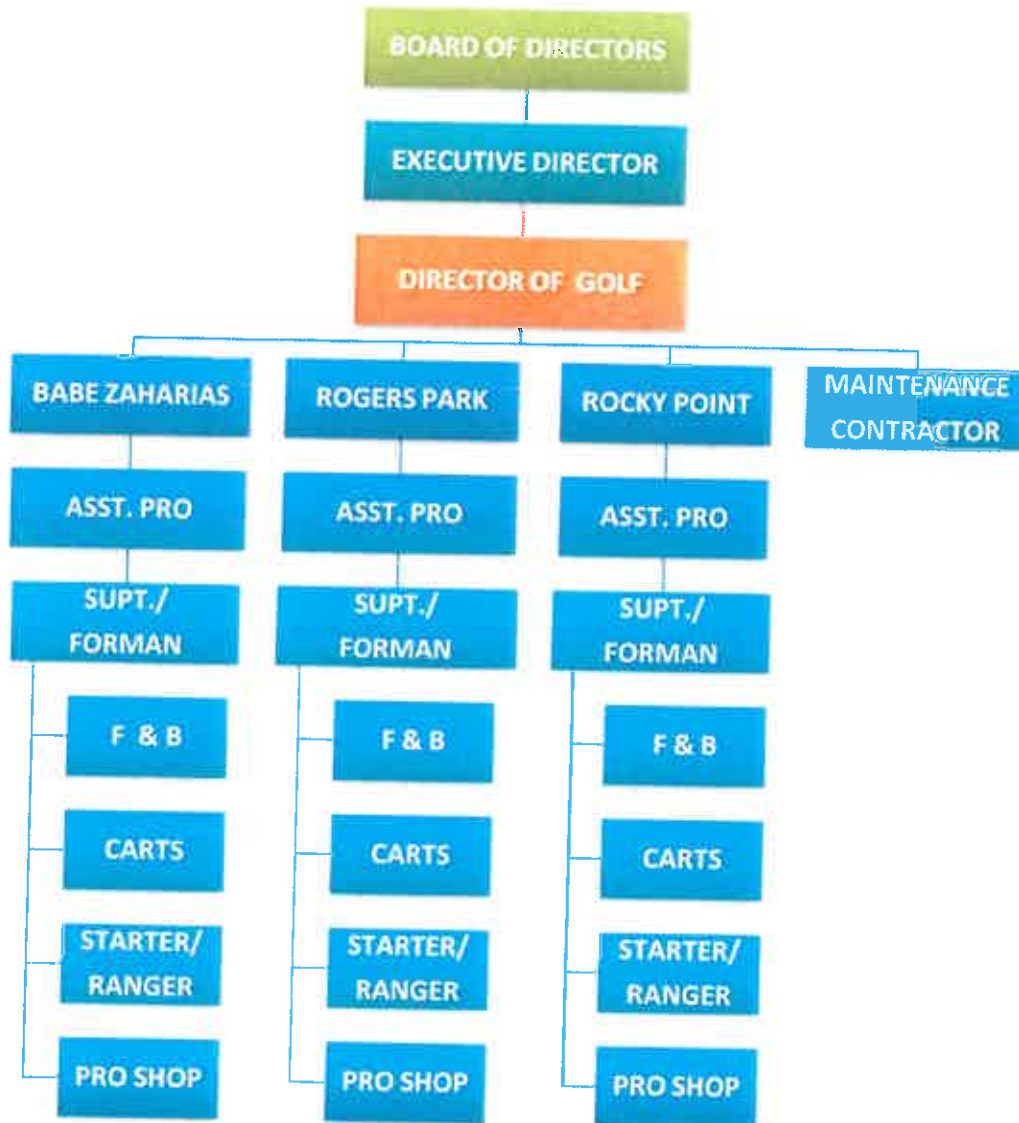
Appointed 11-01  
by the BOCC  
Ex-Officio

**Thomas Scott**



Appointed 4/08  
by the Council  
Ex-Officio

# ORGANIZATIONAL CHART



## **SECTION II – BUDGET REQUEST**

**TAMPA SPORTS AUTHORITY  
GOLF COURSE OPERATIONS COMPONENT  
COMBINING STATEMENT OF REVENUE AND EXPENSES**

	FAIRBANKS ZACHARIAN										ROCKY POINT										ROGERS PARK										TOTALS BY FISCAL YEAR				
	2009		2010		2011		2009		2010		2011		2009		2010		2011		2009		2010		2011		2009		2010		2011						
	ACTUAL	PROJECTED	ACTUAL	PROJECTED	ACTUAL	PROJECTED	ACTUAL	PROJECTED	ACTUAL	PROJECTED	ACTUAL	PROJECTED	ACTUAL	PROJECTED	ACTUAL	PROJECTED	ACTUAL	PROJECTED	ACTUAL	PROJECTED	ACTUAL	PROJECTED	ACTUAL	PROJECTED	ACTUAL	PROJECTED	ACTUAL	PROJECTED	BUDGET						
<b>Operating Revenue</b>	1,055,216	917,217	812,613	893,381	1,668,447	1,121,380	951,497	898,218	935,734	3,906,829	786,493	656,098	552,611	619,971	2,617,173	2,935,109	2,524,812	2,383,442	2,383,442	2,383,442	2,383,442	2,383,442	2,383,442	2,383,442	2,383,442	2,383,442	2,383,442	2,383,442	2,460,086						
Sell fees	150,366	60,209	36,054	61,076	248,603	75,745	65,259	66,189	68,426	276,119	36,083	49,020	44,309	48,698	200,030	201,193	174,998	167,451	167,451	167,451	167,451	167,451	167,451	167,451	167,451	167,451	167,451	167,451	178,110						
Food & Beverage	12,380	9,755	6,361	9,667	38,744	27,325	21,363	13,006	21,854	84,116	171,915	123,539	107,119	116,139	517,313	482,447	425,352	366,726	366,726	366,726	366,726	366,726	366,726	366,726	366,726	366,726	366,726	405,639							
Memberships	0	0	0	0	0	0	0	0	0	0	2,442	5,788	5,788	14,656	37,422	48,145	40,694	25,226	25,226	25,226	25,226	25,226	25,226	25,226	25,226	25,226	25,226	46,617							
Driving range	0	0	0	0	0	0	0	0	0	0	52,331	57,487	59,322	62,852	231,112	111,178	115,640	115,844	115,844	115,844	115,844	115,844	115,844	115,844	115,844	115,844	115,844	122,113							
<b>Total operating revenues</b>	1,256,281	1,187,953	1,126,631	1,196,392	4,327,337	1,443,537	1,248,963	1,163,079	1,331,185	5,088,785	1,078,234	894,931	769,118	861,407	3,601,231	3,778,072	3,301,406	2,958,729	2,958,729	2,958,729	2,958,729	2,958,729	2,958,729	2,958,729	2,958,729	2,958,729	2,958,729	3,301,115							
<b>Operating Revenue Percentage Increase/Decrease from Prior Year</b>	-9%	-9%	-16%	8%	-2%	2%	-13%	-7%	6%	-19%	4%	-17%	-14%	12%	-25%	-4%	-13%	-22%	-22%	-22%	-22%	-22%	-22%	-22%	-22%	-22%	-22%	8%							
<b>Operating Expenses</b>	53,357	49,337	38,805	43,770	183,169	57,488	48,899	40,229	56,192	210,698	45,849	36,037	35,498	40,227	158,381	156,094	134,243	122,332	122,332	122,332	122,332	122,332	122,332	122,332	122,332	122,332	122,332	140,889							
Cost of merchandise sold	48,745	46,031	34,020	46,648	179,446	51,405	48,414	42,005	46,288	188,012	40,413	31,488	31,488	40,227	149,165	149,165	148,533	126,422	126,422	126,422	126,422	126,422	126,422	126,422	126,422	126,422	126,422	138,056							
Clubhouse operations	893,984	463,976	340,998	340,413	1,065,371	532,907	435,012	351,746	410,000	1,729,745	263,974	173,034	173,034	186,528	1,855,806	1,645,965	1,418,012	1,065,039	1,065,039	1,065,039	1,065,039	1,065,039	1,065,039	1,065,039	1,065,039	1,065,039	1,065,039	1,400,316							
Course maintenance	182,580	335,995	517,672	515,761	2,151,579	684,644	684,216	567,825	539,454	2,307,139	686,159	552,670	558,763	544,243	2,361,835	1,793,043	1,692,791	1,644,261	1,644,261	1,644,261	1,644,261	1,644,261	1,644,261	1,644,261	1,644,261	1,644,261	1,644,261	1,591,458							
General and administrative	184,189	181,257	175,433	171,591	712,169	191,944	206,796	202,909	202,397	893,189	180,205	189,245	192,440	183,145	745,333	556,338	577,292	570,782	570,782	570,782	570,782	570,782	570,782	570,782	570,782	570,782	570,782	557,041							
Depreciation and amortization	225,437	226,175	0	0	431,612	98,619	107,596	0	0	386,013	21,381	217,949	0	0	439,330	545,437	551,520	551,520	551,520	551,520	551,520	551,520	551,520	551,520	551,520	551,520	551,520	557,041							
<b>Total operating expenses</b>	1,298,644	1,307,081	1,113,329	1,260,993	5,345,337	1,536,107	1,430,627	1,313,208	1,385,331	5,445,319	1,071,481	1,056,693	1,020,912	1,216,336	5,647,612	4,810,642	4,514,381	4,529,436	4,529,436	4,529,436	4,529,436	4,529,436	4,529,436	4,529,436	4,529,436	4,529,436	4,529,436	3,587,760							
<b>Operating Expenses Percentage Increase/Decrease from Prior Year</b>	-1%	-6%	-26%	2%	-31%	-6%	-6%	-16%	5%	-27%	1%	-7%	-23%	2%	-27%	-2%	-6%	-2%	-2%	-2%	-2%	-2%	-2%	-2%	-2%	-2%	-2%	2%							
<b>Non-operating revenues/expenses</b>	(1,021)	(1,570)	531	(999)	(3,259)	(2,625)	(3,660)	(800)	(339)	(9,519)	(1,986)	(2,111)	274	(102)	(3,926)	(6,322)	(9,348)	(384)	(384)	(384)	(384)	(384)	(384)	(384)	(384)	(384)	(384)	(540)							
<b>Operating Loss Change in Net Assets before Grants and Contributions including Depreciation Expense</b>	(342,573)	(369,108)	(86,998)	(19,600)	(17,800)	(92,550)	(201,664)	(50,125)	(12,140)	(356,485)	(593,447)	(662,203)	(483,784)	(334,229)	(2,044,362)	(1,028,270)	(1,332,975)	(570,707)	(570,707)	(570,707)	(570,707)	(570,707)	(570,707)	(570,707)	(570,707)	(570,707)	(570,707)	(306,575)							
<b>Total Loss Net of Depreciation Before Grants and Contributions</b>	(119,857)	(144,803)	(86,467)	(19,600)	(309,627)	3,444	(99,934)	(51,015)	(12,484)	(159,989)	(374,892)	(446,365)	(483,510)	(358,831)	(1,604,959)	(489,665)	(698,802)	(570,922)	(570,922)	(570,922)	(570,922)	(570,922)	(570,922)	(570,922)	(570,922)	(570,922)	(570,922)	(207,115)							
<b>Capital grants and operating contributions</b>	8,532	154,834	696,610	0	763,386	150,826	241,097	600,890	0	991,923	123,831	297,569	680,089	0	1,021,400	283,209	693,590	1,800,000	1,800,000	1,800,000	1,800,000	1,800,000	1,800,000	1,800,000	1,800,000	1,800,000	1,800,000	0							
<b>Total Loss including Depreciation After Grants and Contributions</b>	(335,942)	(215,844)	(513,513)	(19,600)	(57,241)	55,651	33,767	548,965	(12,484)	625,919	(471,802)	(366,745)	166,490	(358,031)	(1,026,889)	(751,803)	(45,212)	(45,212)	(45,212)	(45,212)	(45,212)	(45,212)	(45,212)	(45,212)	(45,212)	(45,212)	(45,212)	(187,115)							
<b>Total Loss Net of Depreciation After Grants and Contributions</b>	(110,595)	18,331	513,533	(19,600)	393,759	154,270	141,163	548,965	(12,484)	831,934	(290,221)	(148,706)	166,490	(358,831)	(597,959)	(286,456)	2,698	1,229,008	1,229,008	1,229,008	1,229,008	1,229,008	1,229,008	1,229,008	1,229,008	1,229,008	1,229,008	(207,115)							
<b>Loss/Gain Percentage (Net of Depreciation) Before Grants and Contributions</b>	24%	21%	15%	5%	-1%	14%	1%	9%	3%	49%	75%	65%	76%	92%	100%	100%	100%	100%	100%	100%	100%	100%	100%	100%	100%	100%	100%	100%	100%						
<b>By Golf Course, By Fiscal Year Totals</b>	8,532	5,946	87,283	104,709	185,869	307,590	91,887	80,742	131,481	493,610	32,449	30,775	117,903	107,052	267,101	248,421	258,708	258,708	258,708	258,708	258,708	258,708	258,708	258,708	258,708	258,708	258,708	143,241							
<b>Capital expenditures (see attached capital purchase schedule through year 2011)</b>																																			

Note(1): Capital Expenses Fiscal Year 2008-2009, and 2010 reimbursed by City of Tampa. City retains title to all course capital items.  
Note(2): Depreciation Expense for FY 2010 and future Fiscal Periods to be transferred to the City.

**FY 2011 Capital Projects - Golf Operations**

Description	Babe Zaharias	Rogers Park	Rocky Point	Total
Restaurant/Lounge Renovations	\$ 1,500.00	\$ -	\$ 15,000.00	\$ 16,500.00
Bathroom Renovations	5,000.00	0.00	5,000.00	\$ 10,000.00
Computers	1,000.00	1,000.00	1,000.00	\$ 3,000.00
F, F & E	1,000.00	4,000.00	5,000.00	\$ 10,000.00
Landscaping Improvements	2,500.00	2,500.00	2,500.00	\$ 7,500.00
Course Upgrades	5,000.00	15,000.00	5,000.00	\$ 25,000.00
Signage	2,500.00	2,500.00	2,500.00	\$ 7,500.00
Driving Range Equipment	0.00	9,000.00	2,500.00	\$ 11,500.00
Kitchen Equipment	2,500.00	2,500.00	2,500.00	\$ 7,500.00
Security Systems	5,000.00	5,000.00	5,000.00	\$ 15,000.00
Pumps	2,500.00	2,500.00	2,500.00	\$ 7,500.00
Parking Lot Improvements	2,500.00	2,500.00	7,500.00	\$ 12,500.00
Cart/Maint Building Repairs	15,000.00	2,500.00	2,500.00	\$ 20,000.00
Capital Lease - Golf Carts	49,532.40	49,532.40	57,787.80	\$ 156,852.60
Capital Lease - Maintenance	9,176.58	8,519.53	15,192.70	\$ 32,888.81
<b>Subtotal by Course</b>	<b>104,708.98</b>	<b>107,051.93</b>	<b>131,480.50</b>	<b>343,241.41</b>
			<b>TOTAL</b>	<b>\$343,241.41</b>

# TAMPA SPORTS AUTHORITY GOLF COURSES

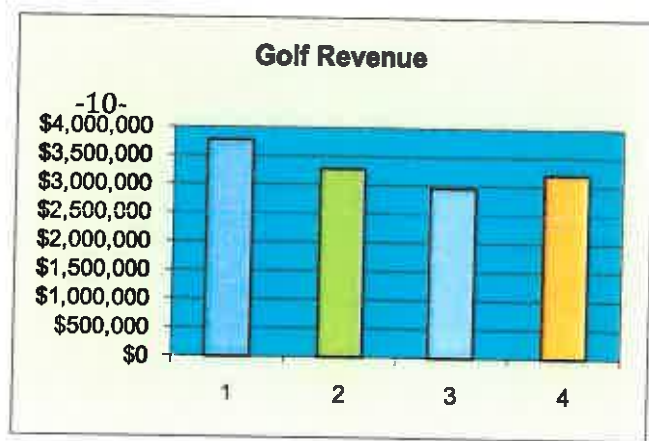
## Total Revenue Comparison

FY 2008-2011

Year 1	Year 2	Year 3	Year 4
FY07-08	FY08-09	FY09-10	FY10-11
		Projected	Budgeted

**Total  
Revenue**

\$3,778,072    \$3,281,406    \$2,958,729    \$3,201,185



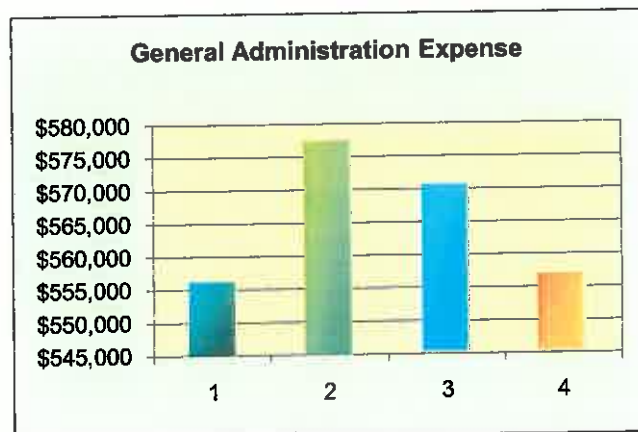


**TAMPA SPORTS AUTHORITY GOLF COURSES**  
**General Administration Expense Comparison**  
**FY 2008-2011**

<b>Year 1</b>	<b>Year 2</b>	<b>Year 3</b>	<b>Year 4</b>
<b>FY07-08</b>	<b>FY08-09</b>	<b>FY09-10</b>	<b>FY10-11</b>
		<b>Projected</b>	<b>Budgeted</b>

**Total  
 General  
 Administration**

\$556,338      \$577,582      \$570,781      \$557,041



# TAMPA SPORTS AUTHORITY GOLF COURSES

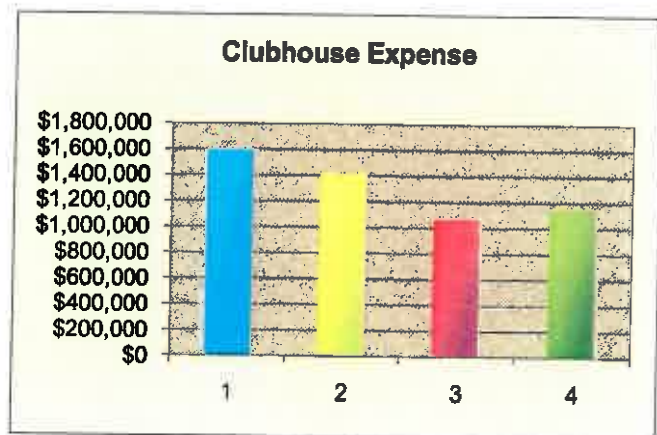
## Clubhouse Expense Comparison

FY 2008-2011

Year 1	Year 2	Year 3	Year 4
FY07-08	FY08-09	FY09-10	FY10-11
		Projected	Budgeted

**Total  
Clubhouse**

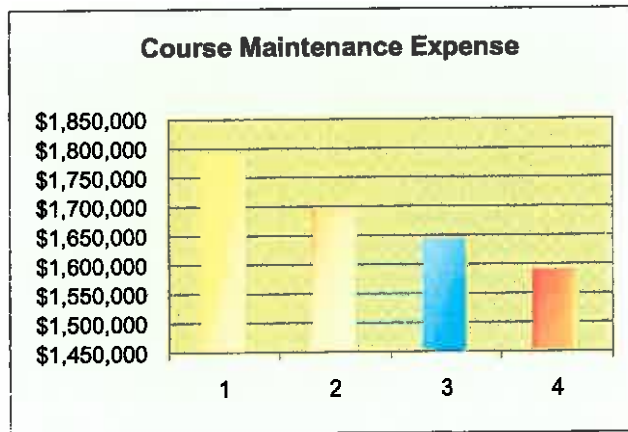
\$1,605,964    \$1,418,012    \$1,065,639    \$1,160,317



**TAMPA SPORTS AUTHORITY GOLF COURSES**  
**Course Maintenance Expense Comparison**  
**FY 2008-2011**

Year 1	Year 2	Year 3	Year 4
FY07-08	FY08-09	FY09-10	FY10-11
		Projected	Budgeted

<b>Total</b>				
<b>Course</b>				
<b>Maintenance</b>	\$1,793,043	\$1,692,791	\$1,644,261	\$1,590,458

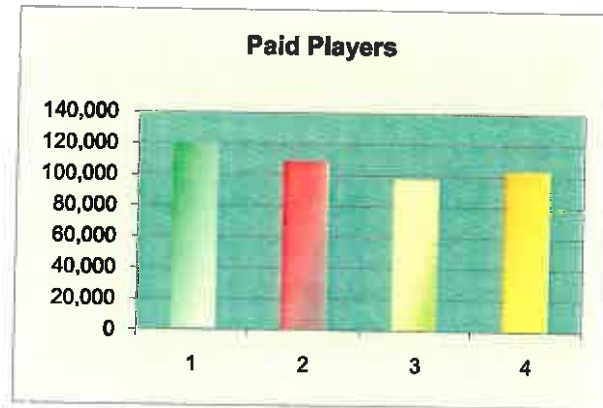


## TAMPA SPORTS AUTHORITY GOLF COURSES

### Paid Players Comparison

**FY 2008-2011**

	Year 1 FY07-08	Year 2 FY08-09	Year 3 FY09-10 Projected	Year 4 FY10-11 Budgeted
<b>Babe Zaharias</b>	42,577	39,510	35,884	38,037
<b>Rogers Park</b>	32,928	28,990	23,984	25,423
<b>Rocky Point</b>	44,630	40,613	38,015	40,296
<b>Total Paid Players</b>	120,135	109,113	97,883	103,756



## **SECTION III - MEMBERSHIP**



## Tradition Membership Plan Information

Membership in the Tradition Membership Plan provides prepaid golf privileges at all (3) Tampa Sports Authority Golf Courses (Babe Zaharias, Rocky Point and Rogers Park). Membership includes walking privileges or ½ cart at the special rate of \$12.00 for 18 holes, \$7.00 for 9 holes or \$10 for twilight. This membership is valid for one year from date of purchase.

### Membership Fee Information

- Monthly membership fees (non refundable) applicable under this plan as outlined:
  - **Single membership** (7 days playing privileges) **\$69.00** per month
  - **Family membership** (Husband & Wife, 7 days playing privileges) **\$89.00** per month
  - **Dependent Children under the age of 14 free** (Added under the Family Membership) **\$25.00** for each dependant between the ages of 15-18, per month.
- Monthly membership fees are due by the 1<sup>st</sup> of every month and charged to your credit card number on file. **Cash and checks will not be accepted**
- If an account goes unpaid for 20 days, the membership will be voided. An application fee Of **\$100.00** will then be required
- There will be no pro-ration of member fees
- Members are not allowed to suspend their membership, for any period of time during the length of this contract

### Tradition Membership Policies and Procedures

- The Tradition Membership privileges are granted solely at the discretion of the Tampa Sports Authority (TSA). Sales of these memberships can be limited as TSA deems appropriate. TSA reserves the right to cancel the Tradition Membership Plan and this agreement at the end of one year
- All operations of the facilities and all policies of the Golf Course will be established and regulated by the TSA
- The Tradition Membership Plan will be awarded upon receipt of all fees and monthly dues
- Each member must check in at pro-shop and starter prior to play
- Dependent Children must have a full driver's license to operate golf carts
- A cap on the number of memberships can and may be established by the TSA
- TSA will establish all initiation fees, monthly and cart fees as deemed appropriate
- Membership privileges are restricted to normal hours of operations
- TSA has the right to restrict play on certain days and times for special use ( including but not limited to tournaments, special events and maintenance of courses and practice areas)
- All members are subject to the rules, regulations and policies established by the TSA. Violation could result in suspension or revocation of membership without refund

Initial \_\_\_\_\_





Official Use Only  
Membership Numbers

### Tradition Golf Membership Plan Application

(Please Print)

Name: \_\_\_\_\_  
Last First Middle

Address: \_\_\_\_\_  
Street Address City state Zip

Email Address: \_\_\_\_\_

Home Phone: \_\_\_\_\_ Cell Phone: \_\_\_\_\_

\_\_\_ I wish to purchase the Tradition Membership Plan

\_\_\_ Single Membership \$69.00 + tax \_\_\_ Family Membership (2) \$89.00 + tax Dependents # \_\_\_ @ \$25.00 + tax

**Tradition Membership Plan:**

- Provides prepaid golf privileges at Rogers Park GC, Rocky Point GC and Babe Zaharias GC
- Walking privileges
- Members ½ cart fee rate (18 holes - \$12.00, 9 holes - \$7.00)

The following persons are to be included under my Tradition Membership Plan:

Name \_\_\_\_\_

Name \_\_\_\_\_

Name \_\_\_\_\_

Name \_\_\_\_\_

I have read the attached fact sheet concerning membership on the above plans. I agree to abide by all rules and regulations of the Tampa Sports Authority Golf Courses.

Signature: \_\_\_\_\_ Date \_\_\_\_\_

**TSA Discount Golf Card 2010**

Enjoy up to 25% savings on every round of golf at Babe Zaharias, Rogers Park and Rocky Point golf courses.

- TSA Discount Golf Cards are offered for purchase and are usable for unlimited play for one year of date of purchase
- A special card purchase discount will be offered for residents of the City of Tampa. Proof of residency is required at the time of purchase
- A special green fee discount is offered to seniors over the age of 55. Proof of age is required at the time of purchase
- All card rates as well as green fees associated with the card are determined and can be changed at any time by the TSA
- Green fees for the day is included the day of the card purchase
- Junior golfer is defined as a high school student (or younger)

**TSA Discount Golf Card Rates 2010**

City of Tampa Resident - \$60	Family (2) - \$90
Non Resident - \$70	Family (2) - \$100
Junior dependant - N/C	
Junior - \$25	
Free round of golf with purchase of card	

**TSA Discount Golf Card 2010**

**Name (s) :** \_\_\_\_\_

**Address :** \_\_\_\_\_

**City:** \_\_\_\_\_ **Zip Code:** \_ \_ \_ \_

**Phone:** \_ \_ - \_ \_ - \_ \_ **Renewal:** Y \_\_\_ N \_\_\_

**E-Mail:** \_\_\_\_\_

*\*The information above is correct and I agree to abide by the rules and policies of the Tampa Sports Authority.*

\_\_\_\_\_  
Customer's Signature

\_\_\_\_\_  
Staff Signature

**TAMPA SPORTS AUTHORITY  
SUMMER RATES FY 09-10**

CURRENT

**Weekends**

<b>Time Breaks</b>	<b>Regular Rate</b>	<b>TSA Card</b>	<b>Seniors Card</b>
<b>7:00 A.M. - 11:00 A.M.</b>			
18 Hole Walk	\$27.00	\$19.00	\$18.00
18 Hole Ride	\$40.00	\$30.00	\$28.00
9 Hole Walk	\$16.00	\$12.00	\$13.00
9 Hole Ride	\$22.00	\$17.00	\$17.00
<b>11:00 A.M. - Twilight</b>			
18 Hole Walk	\$22.00	\$15.00	\$14.00
18 Hole Ride	\$27.00	\$21.00	\$19.00
9 Hole Walk	\$16.00	\$12.00	\$13.00
9 Hole Ride	\$22.00	\$17.00	\$17.00
<b>Twilight - Closing</b>			
Twilight Walk	\$16.00	\$12.00	\$13.00
Twilight Ride	\$22.00	\$17.00	\$17.00

**Weekdays**

<b>Time Breaks</b>	<b>Regular</b>	<b>TSA Card</b>	<b>Seniors Card</b>
<b>7:00 A.M. - Twilight</b>			
18 Hole Walk	\$20.00	\$15.00	\$14.00
18 Hole Ride	\$26.00	\$21.00	\$19.00
9 Hole Walk	\$16.00	\$10.00	\$10.00
9 Hole Ride	\$22.00	\$17.00	\$17.00
<b>Twilight - Close</b>			
Twilight Walk	\$16.00	\$10.00	\$10.00
Twilight Ride	\$22.00	\$17.00	\$16.00
<b>Senior Day</b>	\$23.00		\$17.00

- Notes:**
- Twilight start time will adjust at the TSA's discretion
  - Rates may vary at each TSA Golf Course
  - Senior Days - Age 55, riding only
    - Rogers - Mon / Wed Babe - Tues / Thur Rocky - Tues / Wed
  - Weekend rates on all holidays
  - All rates include 7% sales tax

**Proposed rate change for FY10-11**  
\$1 increase to most rates and \$1 decrease for City of Tampa Resident Card Holders

**TAMPA SPORTS AUTHORITY  
FALL RATES FY 09-10**

CURRENT

**Weekends**

<b>Time Breaks</b>	<b>Regular</b>	<b>TSA Card</b>	<b>Senior TSA Card</b>
<b>7:00 AM- 11:00 AM</b>			
18 Hole Walk	\$27.00	\$20.00	\$19.00
18 Hole Ride	\$40.00	\$30.00	\$28.00
9 Hole Walk	\$17.00	\$15.00	\$14.00
9 Hole Ride	\$24.00	\$19.00	\$18.00
<b>11:00 AM - Twilight</b>			
18 Hole Walk	\$23.00	\$18.00	\$17.00
18 Hole Ride	\$34.00	\$27.00	\$25.00
9 Hole Walk	\$17.00	\$15.00	\$14.00
9 Hole Ride	\$24.00	\$19.00	\$18.00
<b>Twilight</b>			
Walk	\$18.00	\$12.00	\$11.00
Ride	\$24.00	\$19.00	\$18.00

**Weekdays**

<b>Time Breaks</b>	<b>Regular</b>	<b>TSA Card</b>	<b>Senior TSA Card</b>
<b>7:00 AM - 11:00 AM</b>			
18 Hole Walk	\$25.00	\$18.00	\$17.00
18 Hole Ride	\$35.00	\$27.00	\$25.00
9 Hole Walk	\$17.00	\$15.00	\$14.00
9 Hole Ride	\$24.00	\$19.00	\$18.00
<b>11:00 AM - Twilight</b>			
18 Hole Walk	\$22.00	\$18.00	\$17.00
18 Hole Ride	\$30.00	\$25.00	\$23.00
9 Hole Walk	\$17.00	\$15.00	\$14.00
9 Hole Ride	\$24.00	\$19.00	\$18.00
<b>Twilight</b>			
Walk	\$17.00	\$12.00	\$11.00
Ride	\$23.00	\$19.00	\$18.00

- Notes:**
- Twilight start time will adjust at the TSA's discretion
  - Rates may vary at each TSA Golf Course
  - Senior Days - Age 55, riding only
    - Rogers - Mon / Wed Babe - Tues / Thur
  - Weekend rates on all holidays
  - All rates include 7% sales tax

**Proposed rate change for FY10-11**

**Increase rates at Rocky Point by 3-5% and decrease rates at Rogers Park by 7-10%**

**BABE ZAHARIAS GOLF COURSE**

**FALL RATES FY 10-11**

**\*Dates to be determined\***

**Weekdays**

Time Breaks	Regular	TSA Card	Senior TSA Card
<b>7:00 AM - 11:00 AM</b>			
18 Hole Walk	\$23.00	\$18.00	\$17.00
18 Hole Ride	\$35.00	\$27.00	\$26.00
9 Hole Walk	\$17.00	\$15.00	\$14.00
9 Hole Ride	\$24.00	\$19.00	\$18.00
<b>11:00 AM - Twilight</b>			
18 Hole Walk	\$21.00	\$18.00	\$17.00
18 Hole Ride	\$29.00	\$25.00	\$23.00
9 Hole Walk	\$17.00	\$15.00	\$14.00
9 Hole Ride	\$24.00	\$19.00	\$18.00
<b>Twilight</b>			
Walk	\$17.00	\$12.00	\$11.00
Ride	\$22.00	\$19.00	\$18.00
Senior Day	\$30.00		\$25.00

**Weekends**

Time Breaks	Regular	TSA Card	Senior TSA Card
<b>7:00 AM - 11:00 AM</b>			
18 Hole Walk	\$25.00	\$20.00	\$19.00
18 Hole Ride	\$39.00	\$29.00	\$28.00
9 Hole Walk	\$17.00	\$15.00	\$14.00
9 Hole Ride	\$24.00	\$19.00	\$18.00
<b>11:00 AM - Twilight</b>			
18 Hole Walk	\$23.00	\$18.00	\$17.00
18 Hole Ride	\$32.00	\$27.00	\$25.00
9 Hole Walk	\$17.00	\$15.00	\$14.00
9 Hole Ride	\$24.00	\$19.00	\$18.00
<b>Twilight</b>			
Walk	\$18.00	\$12.00	\$11.00
Ride	\$22.00	\$19.00	\$18.00

**Notes:**

- CITY OF TAMPA RESIDENTS CARRYING A TSA CARD GETS \$1 OFF EVERY FEE**
- Early Bird rates at TSA's discretion; 9 holes only, before 8:15 AM**
- Twilight start time will adjust at the TSA's discretion**
- Rates may vary at each TSA Golf Course**
- Senior Days - Age 55, riding only**
- Rogers - Mon / Wed Babe - Tues / Thur**
- Weekend rates on all holidays**
- All rates include 7% sales tax**

**BABE ZAHARIAS GOLF COURSE  
SUMMER RATES FY 10-11  
\*Dates to be determined\***

**Weekdays**

<b>Time Breaks</b>	<b>Regular Rate</b>	<b>TSA Card</b>	<b>Seniors Card</b>
<b>7:00 AM - Twilight</b>			
18 Hole Walk	\$20.00	\$15.00	\$14.00
18 Hole Ride	\$26.00	\$21.00	\$19.00
9 Hole Walk	\$16.00	\$11.00	\$11.00
9 Hole Ride	\$22.00	\$17.00	\$17.00
<b>Twilight - Close</b>			
Walk	\$16.00	\$12.00	\$11.00
Ride	\$22.00	\$17.00	\$17.00
Senior Day	\$23.00		\$17.00

**Weekends**

<b>Time Breaks</b>	<b>Regular Rate</b>	<b>TSA Card</b>	<b>Seniors Card</b>
<b>7:00 AM- 11:00 AM</b>			
18 Hole Walk	\$23.00	\$19.00	\$18.00
18 Hole Ride	\$39.00	\$29.00	\$28.00
9 Hole Walk	\$16.00	\$12.00	\$11.00
9 Hole Ride	\$22.00	\$17.00	\$17.00
<b>11:00 AM - Twilight</b>			
18 Hole Walk	\$22.00	\$15.00	\$14.00
18 Hole Ride	\$27.00	\$21.00	\$19.00
9 Hole Walk	\$16.00	\$12.00	\$11.00
9 Hole Ride	\$22.00	\$17.00	\$17.00
<b>Twilight</b>			
Walk	\$16.00	\$12.00	\$11.00
Ride	\$22.00	\$17.00	\$17.00

**Notes:**

- CITY OF TAMPA RESIDENTS CARRYING A TSA CARD GETS \$1 OFF EVERY FEE**
- Early Bird rates at TSA's discretion; 9 holes only, before 8:15 AM**
- Twilight start time will adjust at the TSA's discretion**
- Rates may vary at each TSA Golf Course**
- Senior Days - Age 55, riding only**
  - Rogers - Mon / Wed Babe - Tues / Thur Rocky - Tues / Wed**
- Weekend rates on all holidays**
- All rates include 7% sales tax**



**ROGERS PARK GOLF COURSE  
FALL RATES FY 10-11  
\*Dates to be determined\***

**Weekdays**

Time Breaks	Regular	TSA Card	Senior TSA Card
<b>7:00 AM - 11:00 AM</b>			
18 Hole Walk	\$22.00	\$18.00	\$17.00
18 Hole Ride	\$33.00	\$25.00	\$24.00
9 Hole Walk	\$17.00	\$15.00	\$14.00
9 Hole Ride	\$24.00	\$19.00	\$18.00
<b>11:00 AM - Twilight</b>			
18 Hole Walk	\$20.00	\$18.00	\$17.00
18 Hole Ride	\$27.00	\$24.00	\$23.00
9 Hole Walk	\$17.00	\$15.00	\$14.00
9 Hole Ride	\$24.00	\$19.00	\$18.00
<b>Twilight</b>			
Walk	\$17.00	\$12.00	\$11.00
Ride	\$22.00	\$19.00	\$18.00
Senior Day	\$30.00		\$22.00

**Weekends**

Time Breaks	Regular	TSA Card	Senior TSA Card
<b>7:00 AM - 11:00 AM</b>			
18 Hole Walk	\$25.00	\$20.00	\$19.00
18 Hole Ride	\$37.00	\$30.00	\$28.00
9 Hole Walk	\$17.00	\$15.00	\$14.00
9 Hole Ride	\$24.00	\$19.00	\$18.00
<b>11:00 AM - Twilight</b>			
18 Hole Walk	\$23.00	\$18.00	\$17.00
18 Hole Ride	\$30.00	\$27.00	\$25.00
9 Hole Walk	\$17.00	\$15.00	\$14.00
9 Hole Ride	\$24.00	\$19.00	\$18.00
<b>Twilight</b>			
Walk	\$18.00	\$12.00	\$11.00
Ride	\$22.00	\$19.00	\$18.00

**Notes:**

- CITY OF TAMPA RESIDENTS CARRYING A TSA CARD GETS \$1 OFF EVERY FEE**
- Early Bird rates at TSA's discretion; 9 holes only, before 8:15 AM**
- Twilight start time will adjust at the TSA's discretion**
- Rates may vary at each TSA Golf Course**
- Senior Days - Age 55, riding only**
- Rogers - Mon / Wed Babe - Tues / Thur**
- Weekend rates on all holidays**
- All rates include 7% sales tax**

**ROGERS PARK GOLF COURSE  
SUMMER RATES FY 10-11  
\*Dates to be determined\***

**Weekdays**

<b>Time Breaks</b>	<b>Regular Rate</b>	<b>TSA Card</b>	<b>Seniors Card</b>
<b>7:00 AM - Twilight</b>			
18 Hole Walk	\$20.00	\$15.00	\$14.00
18 Hole Ride	\$24.00	\$19.00	\$18.00
9 Hole Walk	\$16.00	\$12.00	\$11.00
9 Hole Ride	\$19.00	\$17.00	\$16.00
<b>Twilight - Close</b>			
Walk	\$16.00	\$12.00	\$11.00
Ride	\$19.00	\$17.00	\$16.00
Senior Day	\$19.00		\$16.00

**Weekends**

<b>Time Breaks</b>	<b>Regular Rate</b>	<b>TSA Card</b>	<b>Seniors Card</b>
<b>7:00 AM- 11:00 AM</b>			
18 Hole Walk	\$23.00	\$19.00	\$18.00
18 Hole Ride	\$35.00	\$27.00	\$25.00
9 Hole Walk	\$16.00	\$12.00	\$11.00
9 Hole Ride	\$22.00	\$17.00	\$17.00
<b>11:00 AM - Twilight</b>			
18 Hole Walk	\$22.00	\$15.00	\$14.00
18 Hole Ride	\$25.00	\$21.00	\$19.00
9 Hole Walk	\$16.00	\$12.00	\$11.00
9 Hole Ride	\$22.00	\$17.00	\$17.00
<b>Twilight</b>			
Walk	\$16.00	\$12.00	\$11.00
Ride	\$19.00	\$17.00	\$16.00

**Notes:**

- CITY OF TAMPA RESIDENTS CARRYING A TSA CARD GETS \$1 OFF EVERY FEE**
- Early Bird rates at TSA's discretion; 9 holes only, before 8:15 AM**
- Twilight start time will adjust at the TSA's discretion**
- Rates may vary at each TSA Golf Course**
- Senior Days - Age 55, riding only**
- Rogers - Mon / Wed Babe - Tues / Thur Rocky - Tues / Wed**
- Weekend rates on all holidays**
- All rates include 7% sales tax**

**ROCKY POINT GOLF COURSE  
FALL RATES FY 10-11  
\*Dates to be determined\***

Weekdays			
Time Breaks	Regular	TSA Card	Senior TSA Card
<b>7:00 AM - 11:00 AM</b>			
18 Hole Walk	\$23.00	\$18.00	\$17.00
18 Hole Ride	\$35.00	\$27.00	\$26.00
9 Hole Walk	\$17.00	\$15.00	\$14.00
9 Hole Ride	\$24.00	\$19.00	\$18.00
<b>11:00 AM - Twilight</b>			
18 Hole Walk	\$21.00	\$18.00	\$17.00
18 Hole Ride	\$29.00	\$25.00	\$23.00
9 Hole Walk	\$17.00	\$15.00	\$14.00
9 Hole Ride	\$24.00	\$19.00	\$18.00
<b>Twilight</b>			
Walk	\$17.00	\$12.00	\$11.00
Ride	\$22.00	\$19.00	\$18.00
Senior Day	\$30.00		\$25.00

Weekends			
Time Breaks	Regular	TSA Card	Senior TSA Card
<b>7:00 AM - 11:00 AM</b>			
18 Hole Walk	\$25.00	\$20.00	\$19.00
18 Hole Ride	\$39.00	\$29.00	\$28.00
9 Hole Walk	\$17.00	\$15.00	\$14.00
9 Hole Ride	\$24.00	\$19.00	\$18.00
<b>11:00 AM - Twilight</b>			
18 Hole Walk	\$23.00	\$18.00	\$17.00
18 Hole Ride	\$32.00	\$27.00	\$25.00
9 Hole Walk	\$17.00	\$15.00	\$14.00
9 Hole Ride	\$24.00	\$19.00	\$18.00
<b>Twilight</b>			
Walk	\$18.00	\$12.00	\$11.00
Ride	\$22.00	\$19.00	\$18.00

**Notes:**

- CITY OF TAMPA RESIDENTS CARRYING A TSA CARD GETS \$1 OFF EVERY FEE**
- Early Bird rates at TSA's discretion; 9 holes only, before 8:15 AM**
- Twilight start time will adjust at the TSA's discretion**
- Rates may vary at each TSA Golf Course**
- Senior Days - Age 55, riding only**
- Rogers - Mon / Wed Babe - Tues / Thur**
- Weekend rates on all holidays**
- All rates include 7% sales tax**

**ROCKY POINT GOLF COURSE  
SUMMER RATES FY 10-11  
\*Dates to be determined\***

**Weekdays**

<b>Time Breaks</b>	<b>Regular Rate</b>	<b>TSA Card</b>	<b>Seniors Card</b>
<b>7:00 AM - Twilight</b>			
18 Hole Walk	\$20.00	\$15.00	\$14.00
18 Hole Ride	\$26.00	\$21.00	\$19.00
9 Hole Walk	\$16.00	\$11.00	\$11.00
9 Hole Ride	\$22.00	\$17.00	\$17.00
<b>Twilight - Close</b>			
Walk	\$16.00	\$12.00	\$11.00
Ride	\$22.00	\$17.00	\$17.00
Senior Day	\$23.00		\$17.00

**Weekends**

<b>Time Breaks</b>	<b>Regular Rate</b>	<b>TSA Card</b>	<b>Seniors Card</b>
<b>7:00 AM- 11:00 AM</b>			
18 Hole Walk	\$23.00	\$19.00	\$18.00
18 Hole Ride	\$39.00	\$29.00	\$28.00
9 Hole Walk	\$16.00	\$12.00	\$11.00
9 Hole Ride	\$22.00	\$17.00	\$17.00
<b>11:00 AM - Twilight</b>			
18 Hole Walk	\$22.00	\$15.00	\$14.00
18 Hole Ride	\$27.00	\$21.00	\$19.00
9 Hole Walk	\$16.00	\$12.00	\$11.00
9 Hole Ride	\$22.00	\$17.00	\$17.00
<b>Twilight</b>			
Walk	\$16.00	\$12.00	\$11.00
Ride	\$22.00	\$17.00	\$17.00

**Notes:** CITY OF TAMPA RESIDENTS CARRYING A TSA CARD GETS \$1 OFF EVERY FEE  
 Early Bird rates at TSA's discretion; 9 holes only, before 8:15 AM  
 Twilight start time will adjust at the TSA's discretion  
 Rates may vary at each TSA Golf Course  
 Senior Days - Age 55, riding only  
 Rogers - Mon / Wed Babe - Tues / Thur Rocky - Tues / Wed  
 Weekend rates on all holidays  
 All rates include 7% sales tax

**TAMPA SPORTS AUTHORITY - GOLF OPERATIONS  
RATES COMPARISON - WEEKDAY**

<b>COURSE</b>	<b>COUNTY</b>	<b>AM</b>	<b>PM</b>	<b>Twight</b>	<b>WALK</b>
Westchase	Hills.	49.00	31.00	21.00	NO
Summerfield	Hills	40.00	30.00	22.00	NO
Heritage Harbor	Hills.	30.00	27.00	18.00	NO
Heritage Isle	Hills.	33.00	33.00	26.00	NO
Apollo Bch Golf & Sea	Hills	35.00	35.00	25.00	YES
Northdale	Hills.	25.99	19.99	14.99	YES
Bloomingtondale	Hills	45.00	33.00	17.00	NO
Pebble Creek	Hills.	34.00	34.00	34.00	NO
Mangrove Bay	Pinellas	29.00	29.00	22.50	YES
Chi Chi Rodriquez	Pinellas	30.00	22.00	18.00	NO
Tarpon Springs	Pinellas	27.00	23.00	18.00	NO
Silver Dollar	Hills.	20.00	20.00	20.00	NO
Walden Lakes Lakes	Hills.	40.00	34.00	30.00	NO
Walden Lakes Hills	Hills	34.00	28.00	24.00	NO
Scotland Yards	Pasco	30.00	25.00	20.00	NO
Airco	Pinellas	28.97	26.16/25.00	18.69	NO
USF	Hills.	30.00	26.00	19.00	YES
Plantation Palms	Pasco	35.00	35.00	25.00	YES
Rocky Point Regular	Hills.	26.00	26.00	22.00	YES
Babe Zaharias Regular	Hills.	26.00	26.00	22.00	YES
Rogers Park Regular	Hills.	26.00	26.00	22.00	YES
Rocky Point Card	Hills.	21.00	21.00	17.00	YES
Rogers Park Card	Hills.	21.00	21.00	17.00	YES
Babe Zaharias Card	Hills.	21.00	21.00	17.00	YES
Rocky Point Senior	Hills.	19.00	19.00	16.00	YES
Babe Zaharias Senior	Hills.	19.00	19.00	16.00	YES
Rogers Park Senior	Hills.	19.00	19.00	16.00	YES

**TAMPA SPORTS AUTHORITY - GOLF OPERATIONS  
RATES COMPARISON - WEEKEND**

<b>COURSE</b>	<b>COUNTY</b>	<b>AM</b>	<b>PM</b>	<b>Twilight</b>	<b>WALK</b>
Westchase	Hills.	59.00	49.00 / 31.00	21.00	NO
Summerfield	Hills	48.00	33.00	24.00	NO
Heritage Harbor	Hills.	35.00	30.00	18.00	NO
Heritage Isle	Hills.	41.75	37.00	29.00	NO
Apollo Bch Golf & Sea	Hills	35.00	35.00	25.00	YES
Northdale	Hills.	34.99	26.99/19.99	14.99	YES
Bloomingtondale	Hills	50.00	35.00	17.00	NO
Pebble Creek	Hills	43.00	43.00	30.00	NO
Mangrove Bay	Pinellas	29.00	29.00	22.50	YES
Chi Chi Rodriguez	Pinellas	32.00	22.00	18.00	NO
Tarpon Springs	Pinellas	27.00	23.00	18.00	NO
Silver Dollar	Hills.	23.00	23.00	23.00	NO
Walden Lakes	Hills.	45.00	36.00	32.00	NO
Walden Lakes Hills	Hills	38.00	30.00	26.00	NO
Scotland Yards	Pasco	30.00	30.00	20.00	NO
Airco	Pinellas	32.71	26.16/25.00	18.69	NO
USF	Hills.	39.00	32.00	19.00	YES
Plantation Palms	Pasco	45.00	45.00	29.00	YES
Rocky Point Regular	Hills.	40.00	27.00	22.00	YES
Babe Zaharias Regular	Hills.	40.00	27.00	22.00	YES
Rogers Park Regular	Hills.	40.00	27.00	22.00	YES
Rocky Point Card	Hills.	30.00	21.00	17.00	YES
Rogers Park Card	Hills.	30.00	21.00	17.00	YES
Babe Zaharias Card	Hills.	30.00	21.00	17.00	YES
Rocky Point Senior	Hills.	28.00	19.00	16.00	YES
Babe Zaharias Senior	Hills.	28.00	19.00	16.00	YES
Rogers Park Senior	Hills.	28.00	19.00	16.00	YES

**TAMPA SPORTS AUTHORITY - GOLF OPERATIONS  
SEASON SURVEY - WEEKDAY**

<b>COURSE</b>	<b>COUNTY</b>	<b>7-12</b>	<b>12-1:30</b>	<b>1:30-C</b>	<b>WALK</b>
Westchase	Hills.	90.00	50.00	30.00	NO
Northdale	Hills.	60.00	46.00	25.00	NO
Walden Lakes	Hills.	50.00	35.00	25.69	NO
Golf & Sea Club	Hills.	50.00	35.00	25.00	YES
Bloomingtondale	Hills.	50.00	40.00	20.00	NO
Heritage Harbor	Hills.	48.00	38.00	30.00	NO
Pebble Creek	Hills.	45.00	32.00	30.00	YES
Mangrove Bay	Pinellas	45.00	28.00	28.00	NO
Summerfield	Hills.	45.00	33.00	33.00	NO
Heritage Isle	Hills.	45.00	35.00	26.00	NO
Tarpon Springs	Pinellas	45.00	35.00	25.00	NO
Babe Zaharias Regular	Hills.	42.06	31.77	21.49	YES
Rocky Point Regular	Hills.	42.06	31.77	22.42	YES
Rogers Park Regular	Hills.	42.06	31.77	21.49	YES
USF	Hills.	42.00	31.00	25.00	NO
ChiChi Rodriquez	Pinellas	42.00	30.00	25.00	NO
Scotland Yards	Pasco	40.00	30.00	20.00	YES
Silver Dollar	Hills.	37.00	30.00	30.00	YES
Rocky Point Card	Hills.	30.84	25.23	17.76	YES
Rogers Park Card	Hills.	30.84	24.29	17.76	YES
Babe Zaharias Card	Hills.	30.84	25.23	17.76	YES
Rocky Point Senior	Hills.	29.90	23.35	16.82	YES
Babe Zaharias Senior	Hills.	29.90	22.42	16.82	YES
Rogers Park Senior	Hills.	29.90	22.42	16.82	YES
Quail Hollow	Pasco	28.00	24.00	17.00	NO



**TAMPA SPORTS AUTHORITY - GOLF OPERATIONS  
SEASON SURVEY - WEEKEND**

COURSE	COUNTY	7-1	1-3	3-C	WALK
Westchase	Hills.	90.00	85.00	35.00	NO
Walden Lakes	Hills.	65.00	45.00	30.50	NO
Northdale	Hills.	60.00	51.00	25.00	NO
Heritage Harbor	Hills.	60.00	49.00	33.00	NO
Bloomingtondale	Hills.	55.00	45.00	24.00	NO
USF	Hills.	53.00	39.00	25.00	NO
Summerfield	Hills.	52.00	43.00	43.00	NO
Golf & Sea Club	Hills.	50.00	40.00	25.00	NO
Heritage Isle	Hills.	49.00	44.00	32.00	NO
Pebble Creek	Hills.	45.00	30.00	30.00	NO
Mangrove Bay	Pinellas	45.00	45.00	27.00	NO
Babe Zaharias Regular	Hills.	42.06	31.77	21.49	YES
Rocky Point Regular	Hills.	42.06	31.77	22.42	YES
Rogers Park Regular	Hills.	42.06	31.77	21.49	YES
Chi Chi Rodriquez	Pinellas	39.00	32.00	25.00	NO
Quail Hollow	Pasco	38.00	27.00	18.00	NO
Tarpon Springs	Pinellas	37.00	26.00	20.00	NO
Silver Dollar	Hills.	35.00	29.00	29.00	YES
Rocky Point Card	Hills.	30.84	25.23	17.76	YES
Rogers Park Card	Hills.	30.84	24.29	17.76	YES
Babe Zaharias Card	Hills.	30.84	25.23	17.76	YES
Rocky Point Senior	Hills.	29.90	23.35	16.82	YES
Rogers Park Senior	Hills.	29.90	22.42	16.82	YES
Babe Zaharias Senior	Hills.	29.90	22.42	16.82	YES
Scotland Yards	Pasco	28.00	23.00	12.00	NO